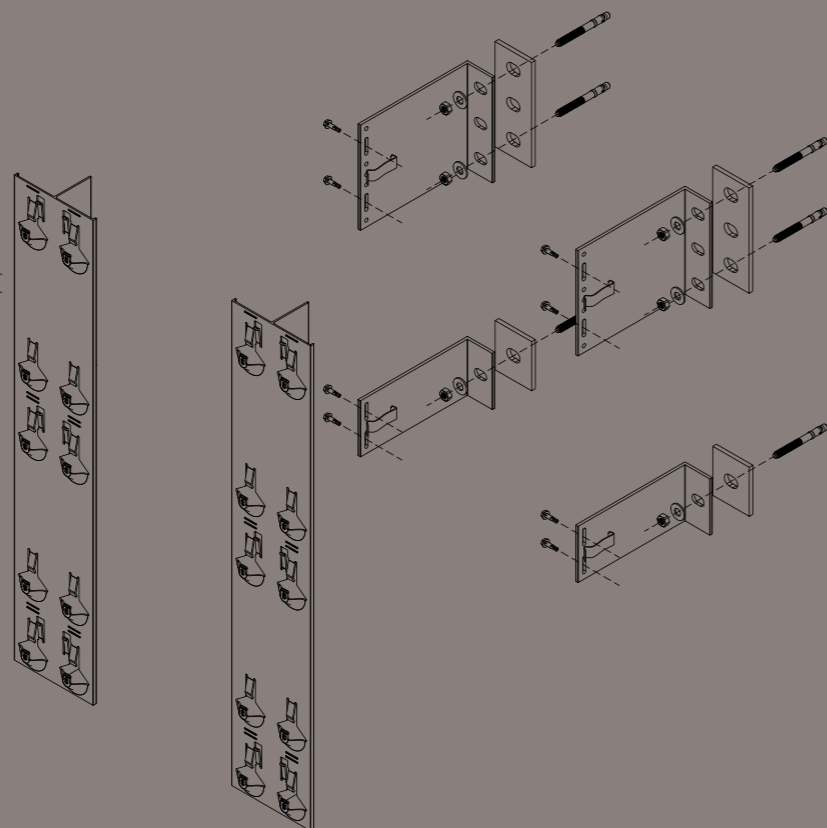
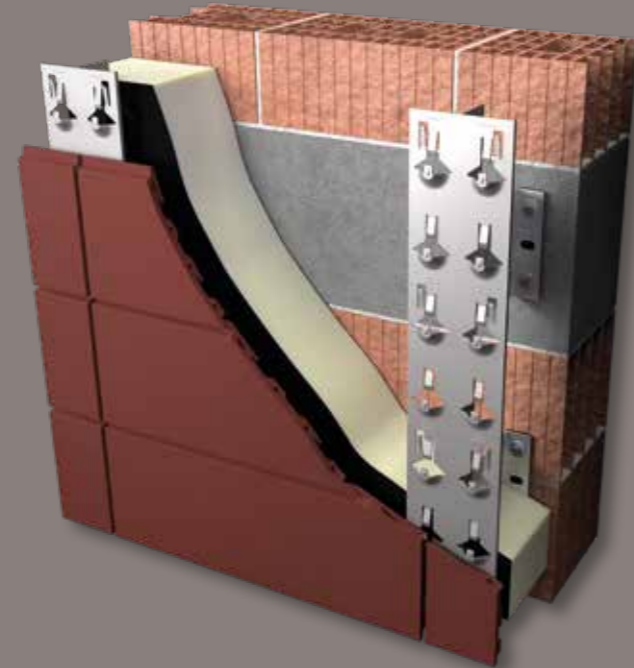
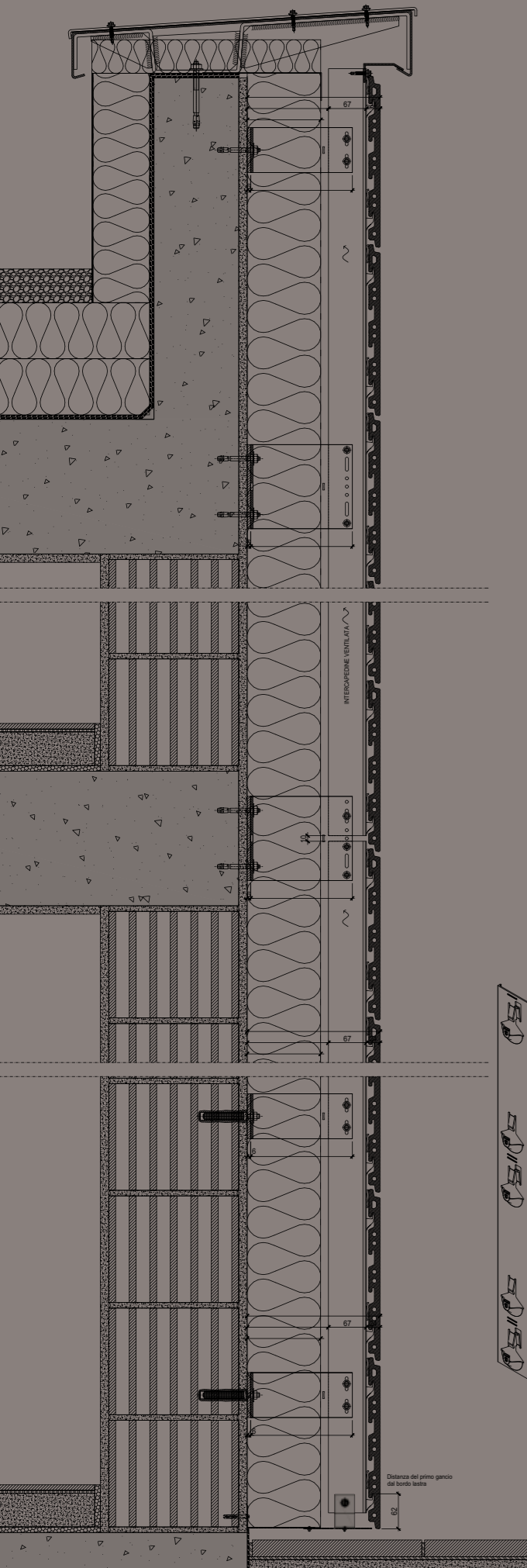


Terra.covering

SCHEDA TECNICA



Informazioni tecniche
Technical information
Información técnica

Terra.covering

Dimensioni massime dei pannelli
Maximum panel dimensions
Tamaño máximo de los paneles

600x1800 mm

Spessore dei pannelli
Panel thickness
Espesor de los paneles

20 mm

Orientamento del pannello
Panel orientation
Orientación del panel

Orizzontale o verticale
Horizontal or vertical
Horizontal o vertical

Materiale
Material
Material

Terracotta estrusa (klinker)
Extruded terracotta (clinker)
Terracota extruida (clinker)

Fuga
Joint
Junta

8 mm

Fissaggio
Fastening
Fijación

A scomparsa, fughe a sormonto
Concealed, overlapping joints
Ocultas, juntas solapadas

Superfici
Surfaces
Superficies

Effetto naturale, smaltato, metallico, pietra.
Natural, glazed, metallic, stone effect.
Efecto natural, esmaltado, metálico, piedra.

Design life del sistema completo
Design life of the complete system
Vida de diseño del sistema completo

> 30 anni
> 30 years
> 30 años

Reazione al fuoco secondo EN 13501-1
Reaction to fire according to EN 13501-1
Reacción al fuego según la EN 13501-1

A1

Peso sistema completo di sottostruttura
Weight of the system with substructure
Peso del sistema con subestructura

32 kg/m²



Recyclability



Recycled content



Easy installation



Impact resistance



Chemicals resistance



Easy cleaning



A1
Fire reaction



Resistance to atmospheric agents



Single panel replacement



Self-cleaning surface