

METROPOLIS[®]

MADE IN ITALY

METROPOLIS[®]

MADE IN ITALY

Metropolis è la divisione pitture e resine decorative di Gruppo Ivas.

Fin dalla sua fondazione nel 1953, Ivas SpA - azienda con sistema di gestione per la qualità certificato UNI EN ISO 9001 - produce e distribuisce nel mondo pitture, resine e vernici formulate per raggiungere il più alto standard qualitativo del settore. I prodotti Metropolis, ecocompatibili, a base acqua, esenti da solventi, rappresentano l'eccellenza italiana per la decorazione di interni.



Metropolis is the internationally recognised decorative paints and resins division of Gruppo Ivas. Since its establishment in 1953, Ivas SpA - company with quality management system certified UNI EN ISO 9001- has produced and distributed paints, resins and varnishes developed to the most exacting standards worldwide. Metropolis eco-friendly water-based and solvent-free products represent the gold standard of Italian interior decoration.

Design Decorative Finishes è la linea completa di decorativi Metropolis by IVAS, formulati per rappresentare il più alto livello nella decorazione delle superfici. Adatti a soddisfare qualsiasi gusto o necessità stilistica, i prodotti della linea design spaziano dallo stile classico a quello contemporaneo. Attraverso la combinazione di alcuni prodotti si ottengono gli effetti materici per interno, Urban Effects - Materia Urbana e quelli per esterno, Texture Design.

Design Decorative Finishes è una linea costituita esclusivamente da prodotti all'acqua ed ecosostenibili.

Design Decorative Finishes is the complete Metropolis by IVAS line of decorative products, formulated as epitome of surface decoration. Able to meet any taste or style requirement, the products of the Design line range from classic to contemporary style. By combining certain products of the Design line, it is possible to achieve textured effects for indoors, a collection that we named Urban Effects - Materia Urbana, as well as effects for outdoors, that we named Texture Design.

The **Design Decorative Finishes** line comprises only water-based, low VOC, eco-friendly products.



design

decorative finishes

design

decorative finishes



Photo: Laminax - Effetto Inox / Inox effect

finiture decorative iridescenti, metalliche

iridescent, metallic decorative
plasters

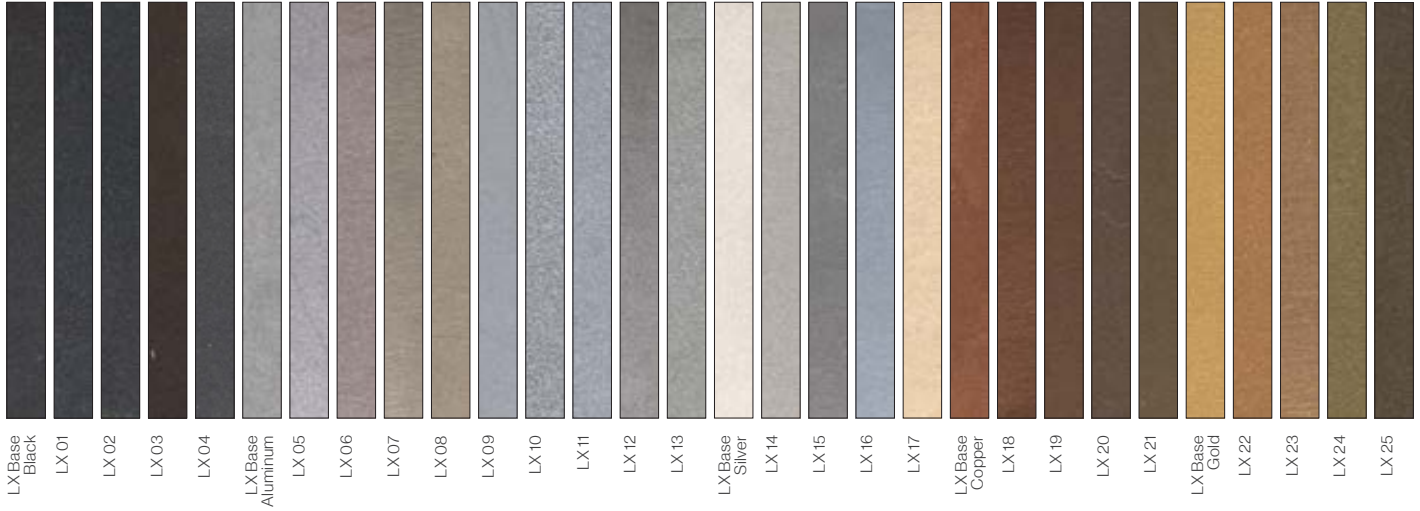
Stucco multicolore per effetto lamina metallica e sue ossidazioni,
all'acqua.
Per Interno.

Metalized plaster skim coat, water-based, metallic foil polished, etched,
oxidized effect.
For interior use.

LAMINAX

Stucco metallico

Colori / Colours:



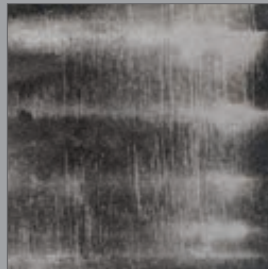
Tecniche / Techniques:



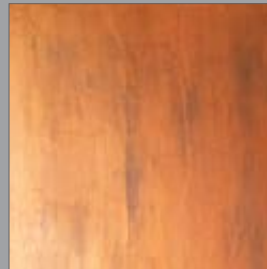
Effetto Inox
Inox Effect
LX Aluminum Base



Effetto Century Acidato
Century Etched Effect
LX Copper Base + LX Aluminum Base



Effetto Garage
Garage Effect
LX Aluminum Base + LX Black Base



Effetto Century Ossidato
Century Oxidized Effect
LX Black Base + LX Copper Base



Effetto Century Ossidato
Century Oxidized Effect
LX Copper Base + LX Gold Base

design

decorative finishes



Photo: Senso -Effetto Industrial / Industrial effect

finiture decorative iridescenti, metalliche

iridescent, metallic decorative
plasters

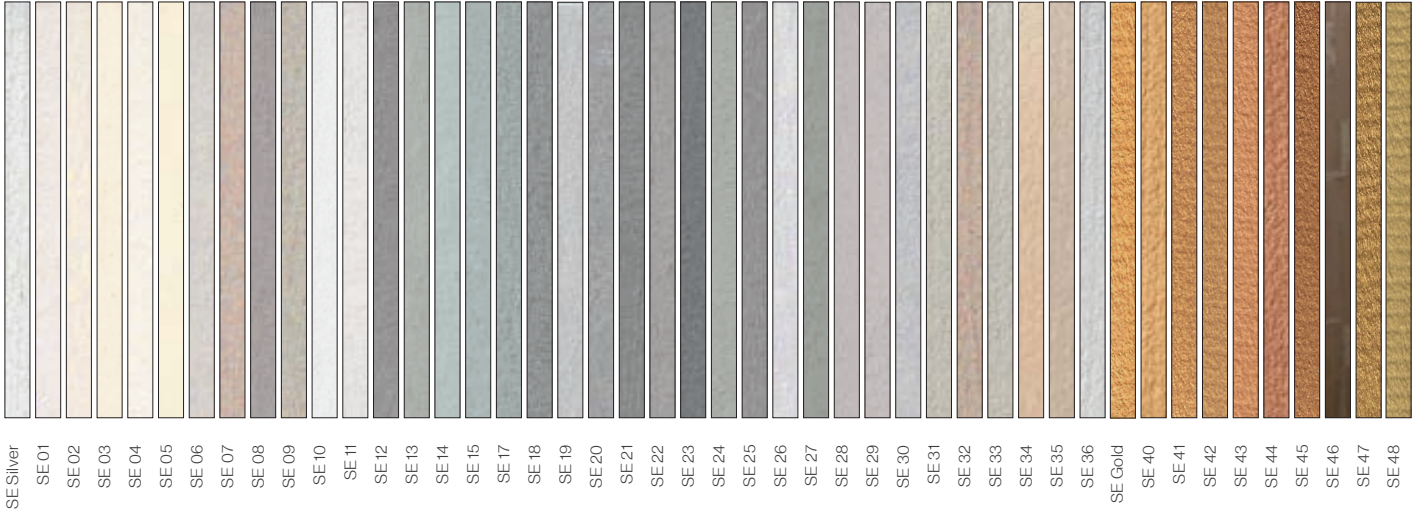
Finitura materica opaca ad effetto velluto, lievemente perlescente,
all'acqua.
Per interno.

Matt, textured finish with a velvety, slightly pearly effect. Water-based.
For interior use.

SENZO

Metallo materico

Colori / Colours:



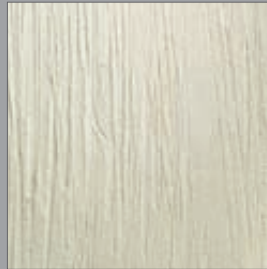
Tecniche / Techniques:



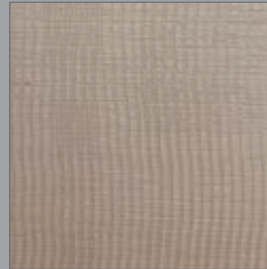
Effetto Industrial
Industrial Effect
SE 12



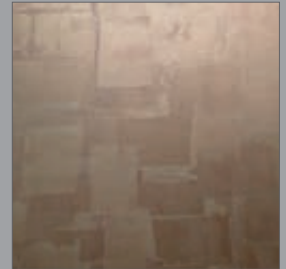
Effetto Steel
Steel Effect
SE 18



Effetto Textile
Textile Effect
SE 03



Effetto Juta Wallpaper
Juta Wallpaper Effect
SE 09



Effetto Leaf
Suede Effect
SE 46

design

decorative finishes



Photo: Lady Vi - Effetto Madame / Madame effect

finiture decorative iridescenti, metalliche

iridescent, metallic decorative
plasters

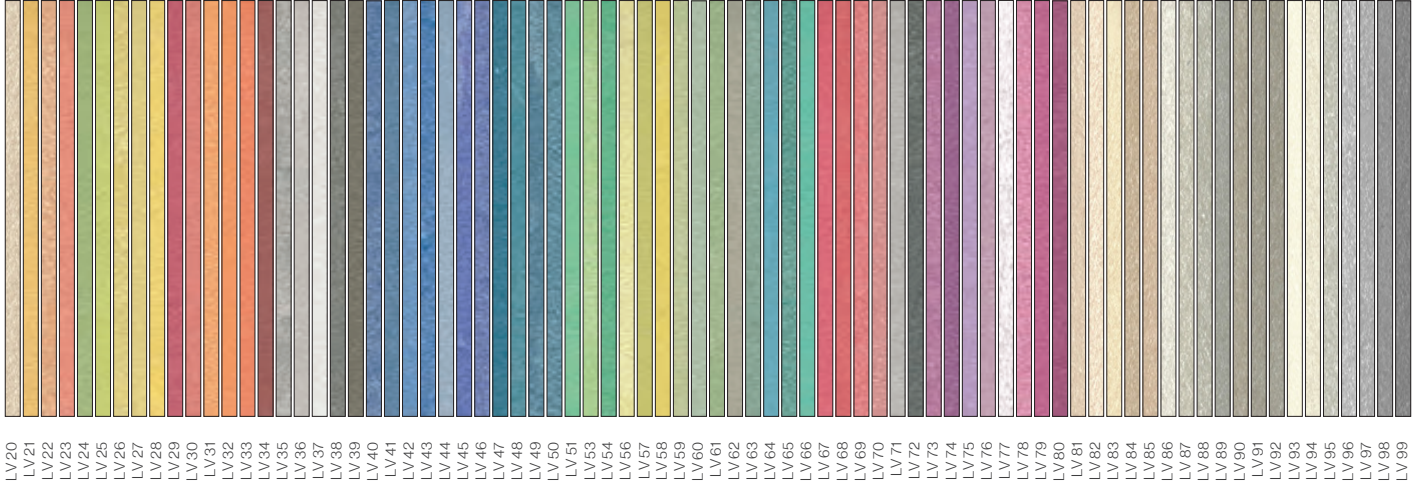
Finitura lavabile ad effetto vellutato, cangiante, all'acqua.
Per interno.

Water-based washable coating with velvety, iridescent finish.
For interior use.

LADY VÍ

Soffice Velluto

Colori / Colours:



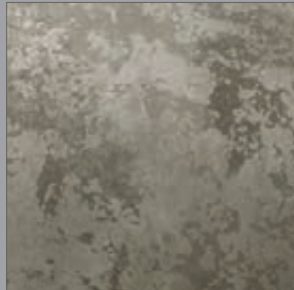
LV 20
LV 21
LV 22
LV 23
LV 24
LV 25
LV 26
LV 27
LV 28
LV 29
LV 30
LV 31
LV 32
LV 33
LV 34
LV 35
LV 36
LV 37
LV 38
LV 39
LV 40
LV 41
LV 42
LV 43
LV 44
LV 45
LV 46
LV 47
LV 48
LV 49
LV 50
LV 51
LV 53
LV 54
LV 56
LV 57
LV 58
LV 59
LV 60
LV 61
LV 62
LV 63
LV 64
LV 65
LV 66
LV 67
LV 68
LV 69
LV 70
LV 71
LV 72
LV 73
LV 74
LV 75
LV 76
LV 77
LV 78
LV 79
LV 80
LV 81
LV 82
LV 83
LV 84
LV 85
LV 86
LV 87
LV 88
LV 89
LV 90
LV 91
LV 92
LV 93
LV 94
LV 95
LV 96
LV 97
LV 98
LV 99

Ivas SpA © All Rights Reserved

Tecniche / Techniques:



Effetto Classic
Classic Effect
LV 39



Effetto Materik
Materik Effect
LV 91 + LV 62



Effetto Madame
Madame Effect
LV 72

design

decorative finishes



Photo: Mida - Effetto Classico / Classic effect

finiture decorative iridescenti, metalliche

iridescent, metallic decorative
plasters

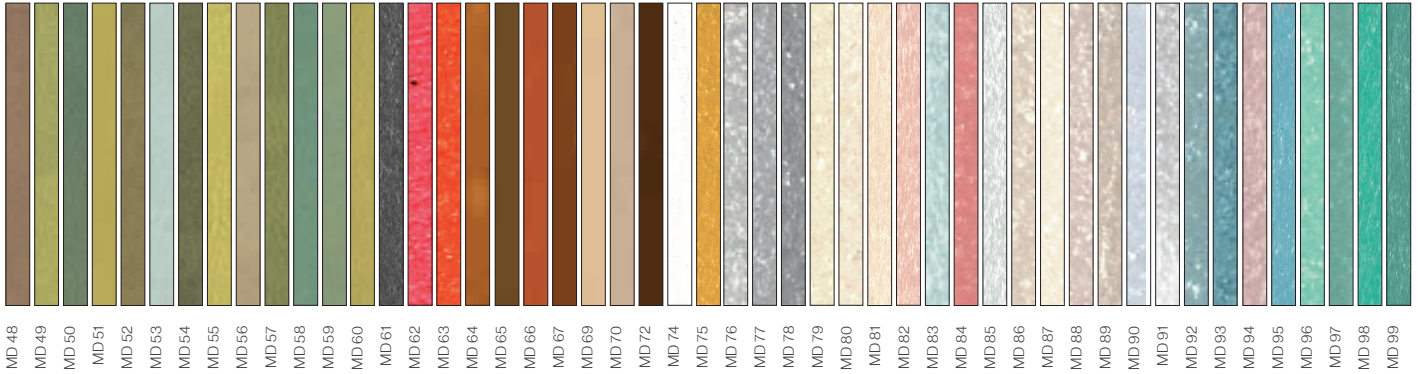
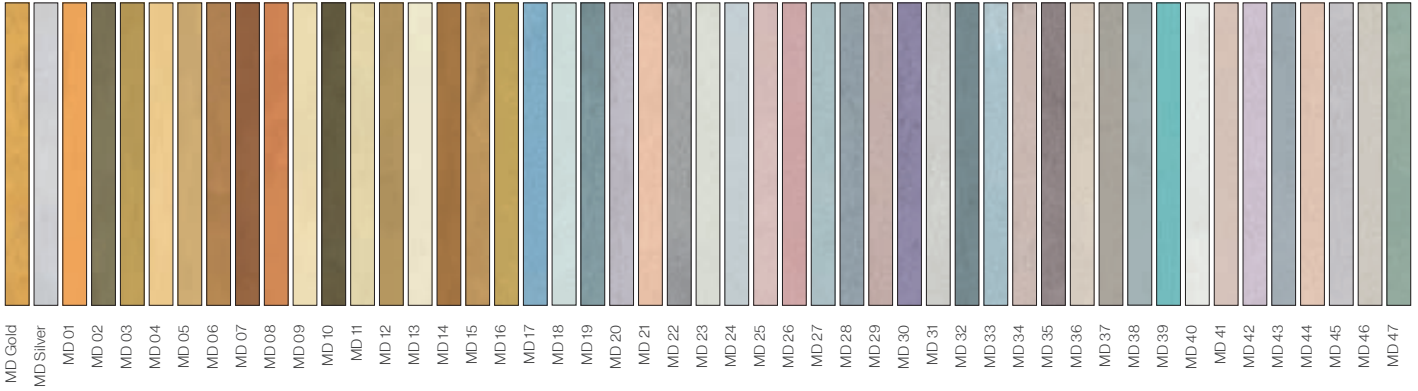
Finitura lavabile vellutata ad effetto multicolore, estremamente resistente al graffio, metallizzata, all'acqua.
Per interno.

Velvety multi-coloured effect finishing coat, water-based, metallic, extremely scratch resistant and washable.
For interior use.

MIDA

Il tocco del Re

Colori / Colours:



Tecniche / Techniques:



Effetto Classico

Classic Effect
MD Silver Base + MD Silver Base



Effetto Brown Sugar

Brown Sugar Effect
MD Gold Base + Hot Metal HM 02

design

decorative finishes



Photo: Mito - Effetto Texture / Texture effect

finiture decorative iridescenti, metalliche

iridescent, metallic decorative
plasters

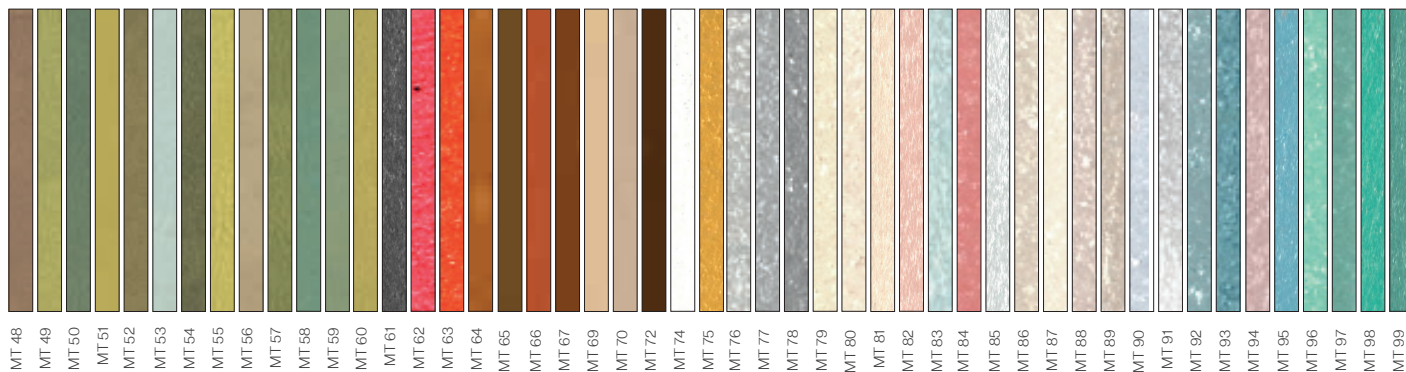
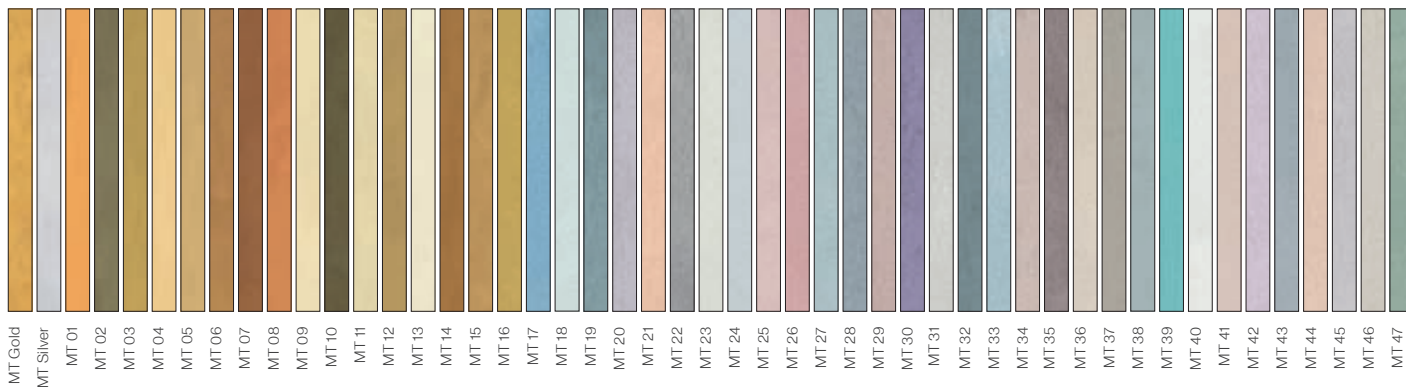
Finitura lavabile materica ad effetto multicromatico, metallizzata,
all'acqua.
Per interno.

Textural multi-coloured effect finishing coat, water-based, metallic and
washable.
For interior use.

MITO

Colori / Colours:

Lusso e Leggenda



Tecniche / Techniques:



Effetto Soft
Soft Effect
Mida MD Gold Base + MT Gold Base



Effetto Texture
Texture Effect
Mida MD 61 + MT 61

design

decorative finishes



Photo: Fato - Effetto Brush / Brush effect

finiture decorative iridescenti, metalliche

iridescent, metallic decorative
plasters

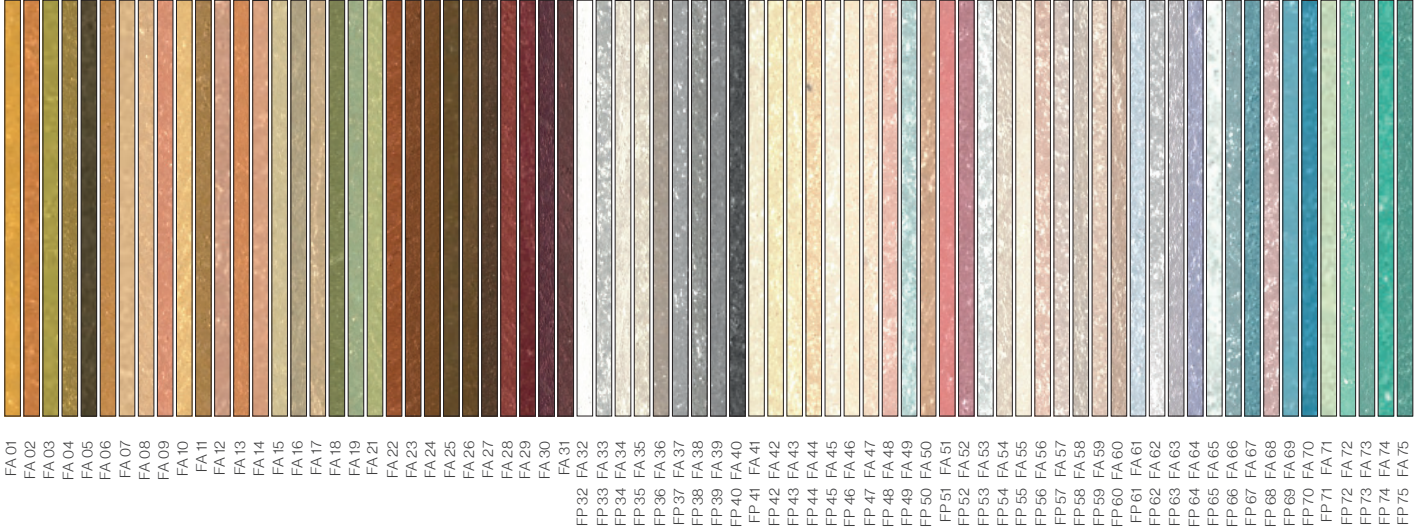
Finitura multicolore all'acqua, a rilievo, metallizzata, lavabile.
Per interno.

Multi-coloured finishing coat, water-based, washable, metallic,
embossed.
For interior use.

FA10

Polvere di luce

Colori / Colours:



Ivas SpA © All Rights Reserved

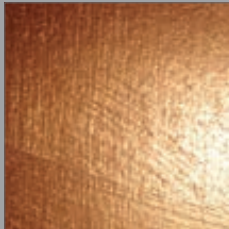
Basi e Tecniche / Bases and Techniques:



Effetto Scratched
Scratched Effect
FP Platinum Base



Effetto Brush
Brush Effect
FA Gold Base



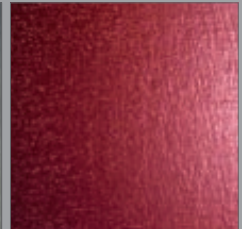
Effetto Brush
Brush Effect
FA Copper Base



Effetto Brush
Brush Effect
FA Sugar Base



Effetto Brush
Brush Effect
FA Silver Base



Effetto Brush
Brush Effect
FA Red Base

design

decorative finishes



Photo: Hot Metal + Mida - Effetto Corten /Corten effect

finiture decorative iridescenti, metalliche

iridescent, metallic decorative
plasters

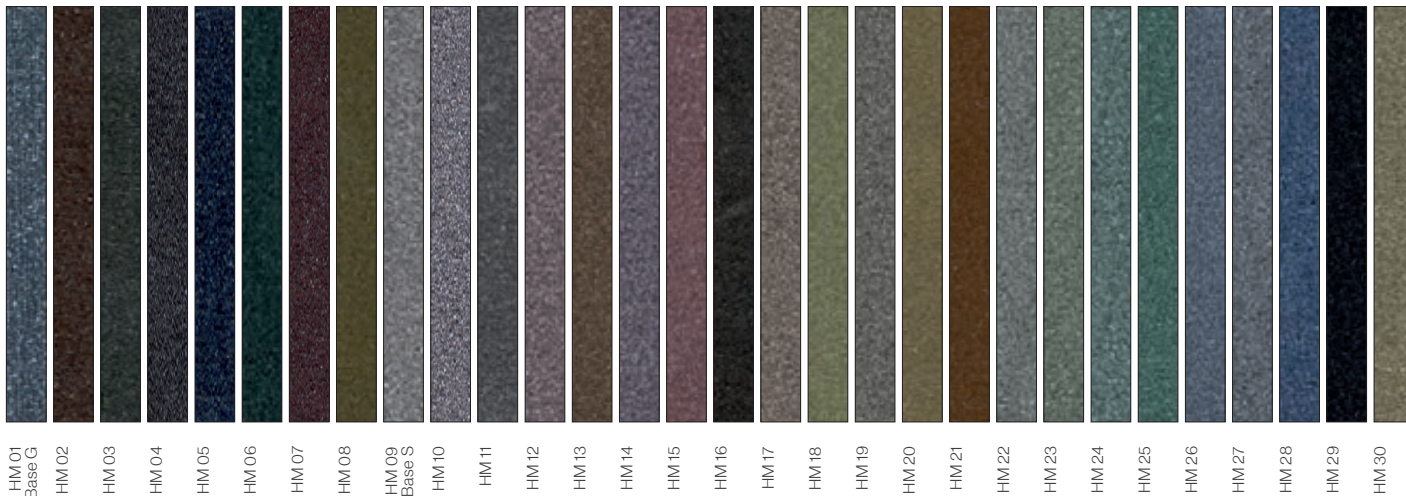
Finitura lavabile micacea ad effetto metallico, brillante alla luce, all'acqua.
Per interno ed esterno.

Washable micaceous metallic effect finishing coat, glistens in the light,
water-based.
For interior or exterior use.

HOT METAL

Spirito d'acciaio

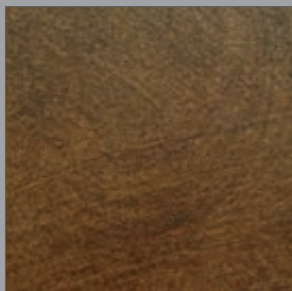
Colori / Colours:



HM 01
Base G
HM 02
HM 03
HM 04
HM 05
HM 06
HM 07
HM 08
HM 09
Base S
HM 10
HM 11
HM 12
HM 13
HM 14
HM 15
HM 16
HM 17
HM 18
HM 19
HM 20
HM 21
HM 22
HM 23
HM 24
HM 25
HM 26
HM 27
HM 28
HM 29
HM 30

Ivas SpA © All Rights Reserved

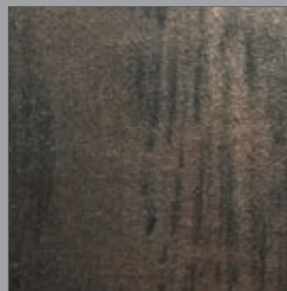
Prodotti e Tecniche / Products and Techniques:



Effetto Velato
Veiled Effect
HM 02



Effetto Pieno
Full Effect
HM 05



Effetto Corten
Corten Effect
HM 02 + HM 01 + Mida MD 08

design

decorative finishes



Photo: Canova - Effetto spatolato / Trowelled effect

stucchi decorativi

decorative plasters

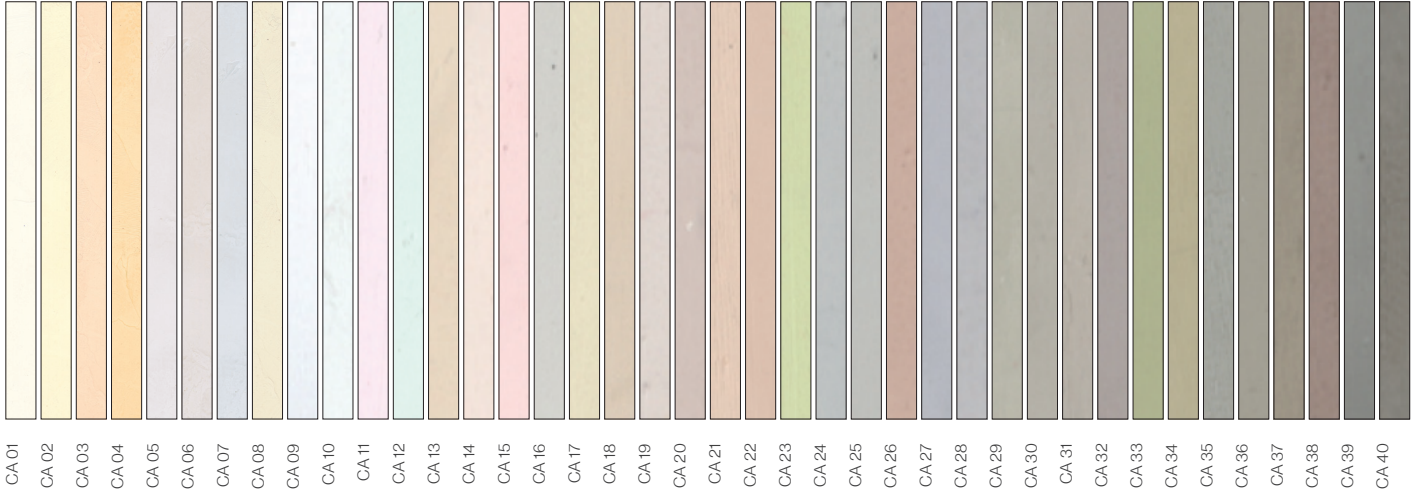
Stucco a spessore extrafine ad effetto gesso neoclassico, morbido e setoso al tatto, opaco traspirante, all'acqua.
Per interno.

Stucco with extra fine thickness creating a neoclassical gypsum effect, soft and silky feel, matt, breathable, water-based.
For interior use.

CANOVA

Antico gesso

Colori / Colours:



design

decorative finishes



Photo: Venezia S - Effetto spatolato / Trowelled effect

stucchi decorativi

decorative plasters

Stucco veneziano, traspirante, lucido, all'acqua.
Per interno.

Venetian stucco, breathable, glossy, water-based.
For interior.

VENEZIA S

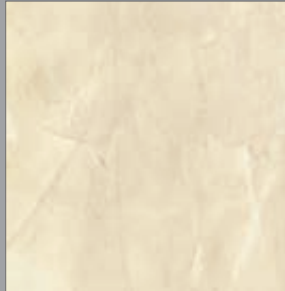
Antico Nobile Stucco

Colori / Colours:

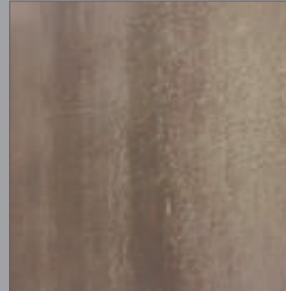


VE 01
VE 02
VE 03
VE 05
VE 06
VE 07
VE 09
VE 10
VE 11
VE 13
VE 14
VE 15
VE 17
VE 18
VE 19
VE 20
VE 22
VE 23
VE 25
VE 26
VE 27
VE 28
VE 29
VE 30
VE 31
VE 33
VE 34
VE 35
VE 37
VE 38
VE 39
VE 41
VE 42
VE 43
VE 44
VE 45
VE 46
VE 47
VE 48
VE 49
VE 50
VE 51
VE 52
VE 53
VE 54
VE 55
VE 57
VE 58
VE 59
VE 60
VE 62
VE 63
VE 64
VE 67
VE 68
VE 69
VE 71
VE 72
VE 73
VE 74
VE 75
VE 76
VE 77
VE 78
VE 79
VE 80
VE 81
VE 82
VE 83
VE 84
VE 85
VE 86
VE 87
VE 88
VE 89
VE 90
VE 92
VE 93
VE 94
VE 97
VE 98
VE 99

Tecniche / Techniques:



Effetto Italian Classic
Italian Classic Effect
VE 69



Effetto Single Layer Minimal
Single Layer Minimal Effect
VE 18

design

decorative finishes



Photo: Soul Cement + Lady Vi - Effetto Blade Runner / Blade Runner effect

stucchi decorativi

decorative plasters

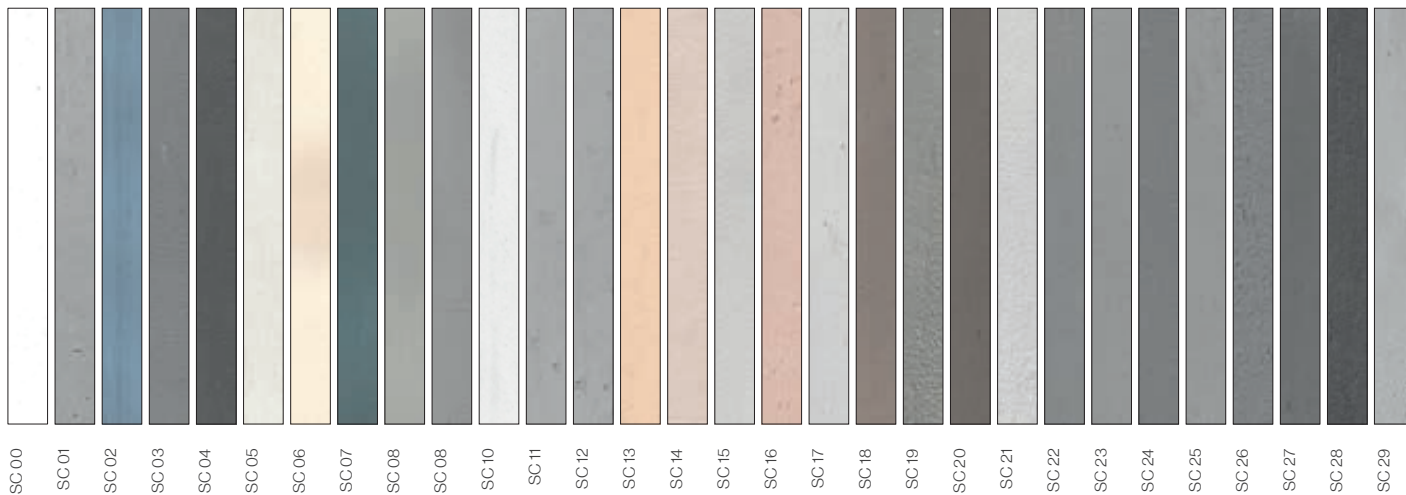
Stucco intonaco a finire ad effetto cemento dilavato, traspirante, satinato, all'acqua; a base di calce.
Per interno ed esterno (Soul Cement Ext.)

Plaster finishing coat that creates the effect of washed cement, breathable, satin finish, water-based, lime-based.
For interior and exterior use (Soul Cement Ext.)

SOUL CEMENT

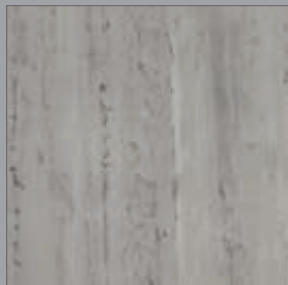
Anima di cemento

Colori / Colours:



Ivas SpA© All Rights Reserved

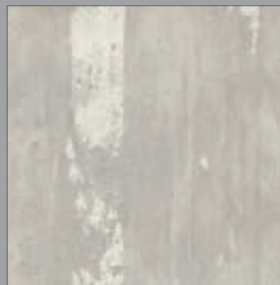
Tecniche / Techniques:



SC 01



SC 02



Effetto Blade Runner
Blade Runner Effect
SC 00 + Lady Vi LV 71



Effetto Blade Runner
Blade Runner Effect
SC 22 + Lady Vi LV 63

design

decorative finishes



Photo: Concreto - Effetto Striato / Streaked effect

finiture decorative a base calce

decorative lime finishes

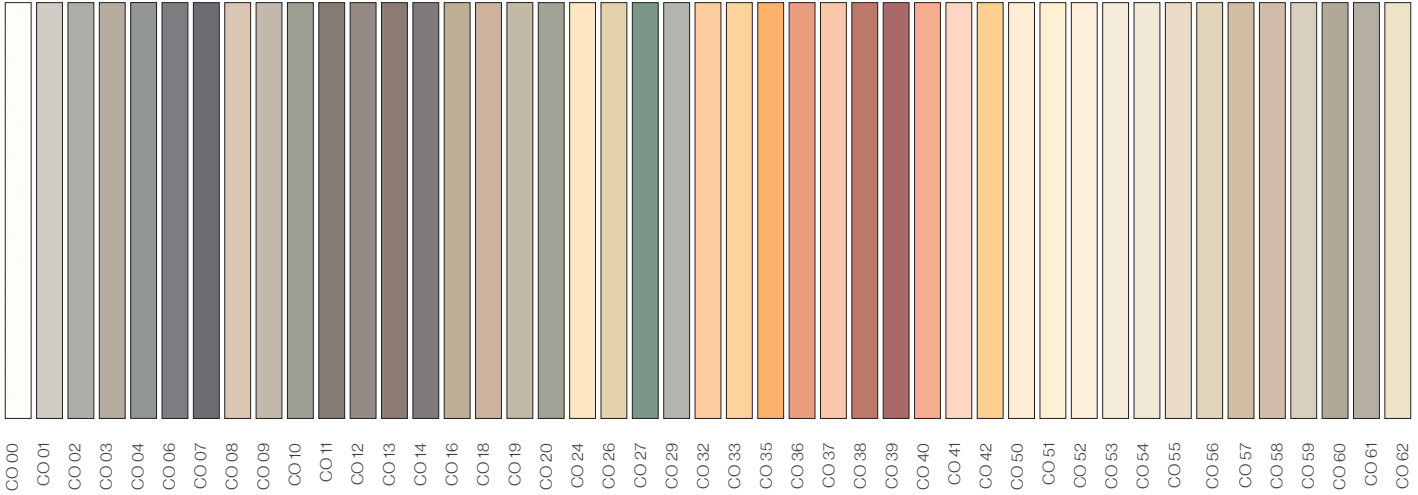
Rivestimento a spessore texturizzato a base di calce naturale per effetti lisci o materici. Ideale per ricreare i molteplici aspetti del cemento: spazzolato, armato, materico e striato. Per interno ed esterno.

Continuous texturised natural lime based thick coat for a smooth or matic effect. Ideal to recreate the multiple aspects of the cement: brushed, reinforced, matic and streaked. For interior and exterior use.

CONCRETO

Cemento materico

Colori / Colours:



Ivas SpA © All Rights Reserved

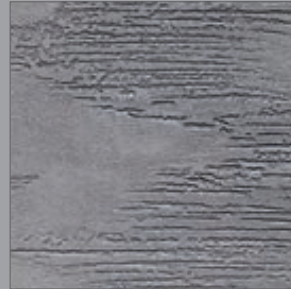
Tecniche / Techniques:



Effetto Cemento spazzolato
Brushed cement Effect
CO 02



Effetto Materico
Materico Effect
CO 01



Effetto Striato
Streaked Effect
CO 04



Effetto Armato
Reinforced Effect
CO 10

design

decorative finishes



Photo: Old Time Max - Effetto pietra naturale / Natural stone effect

finiture decorative a base calce

decorative lime finishes

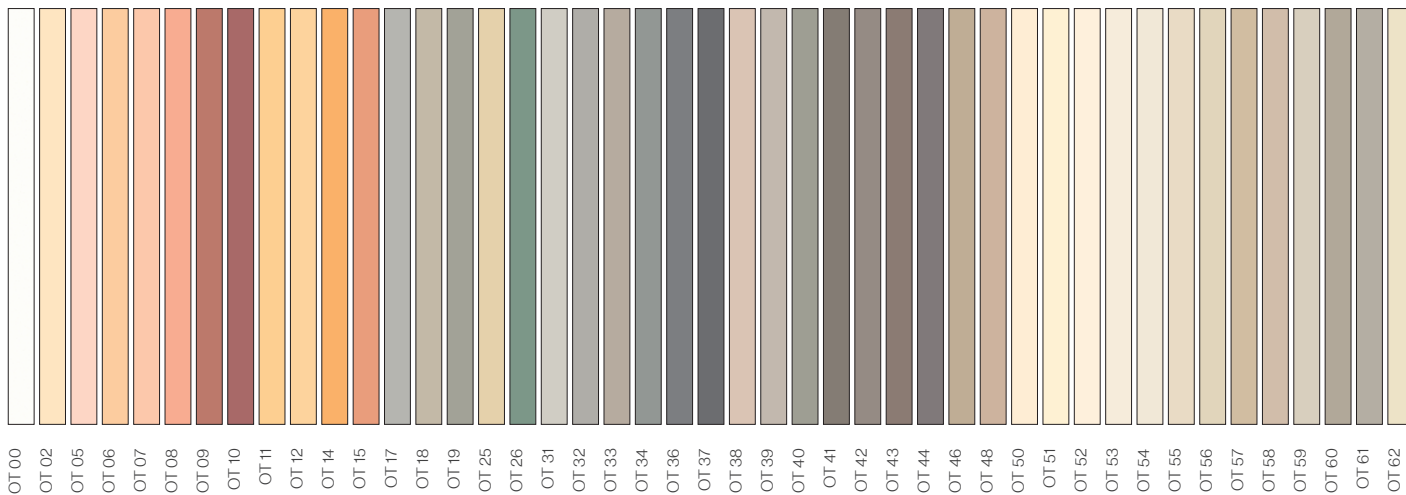
Linea di pitture, stucchi e intonaci minerali a base calce, traspiranti, ideali per effetti parete anticata, pietra liscia e marmo lucido, all'acqua. Per interno ed esterno.

Line of lime-based mineral paints, stuccoes and plasters, breathable and water-based. Ideal to create the antique, polished stones and glossy marble effects. For interior and exterior use.

OLD TIMES

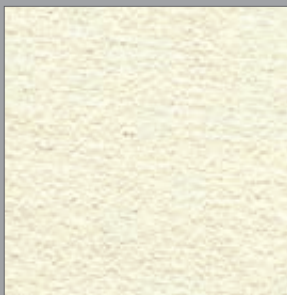
I tempi antichi della calce

Colori / Colours:



Ivas SpA © All Rights Reserved

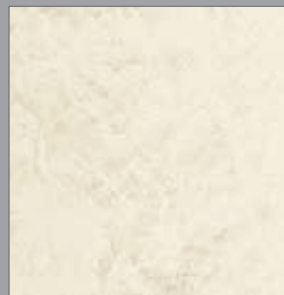
Prodotti e Tecniche / Products and Techniques:



Effetto Anticato
Antique Effect
Old Time OT 02



Effetto Pietra Naturale
Natural Stone Effect
Old Time Max OT 18



Effetto Marmorino
Marmorino Effect
Old Time Max + Old Time Finish OT 62

design

decorative finishes



Photo: Factor - Effetto Vena Naturale / Vena Naturale effect

finiture decorative materiche

textured decorative finishes

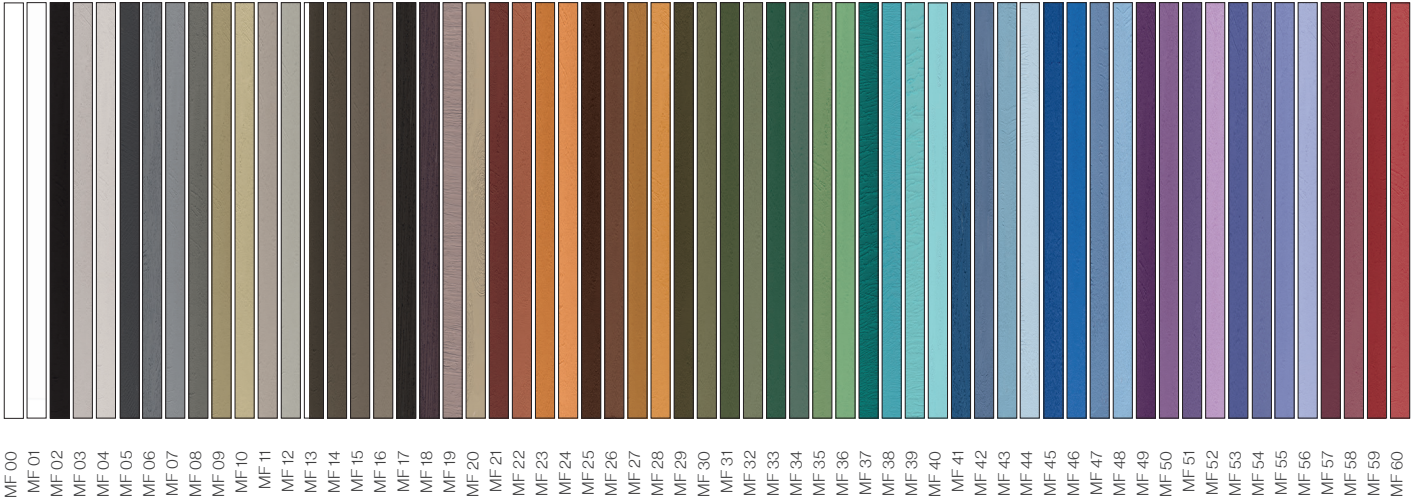
Rivestimento riempitivo acril-silossanico a spessore per finiture materiche; traspirante, idrorepellente, flessibile, all'acqua. Per interno ed esterno.

Textured acrylic-siloxane filling finishing coat, breathable, water repellent, flexible, water-based. For interior and exterior use.

FACTOR

Materia creativa

Colori / Colours:



MF 00
MF 01
MF 02
MF 03
MF 04
MF 05
MF 06
MF 07
MF 08
MF 09
MF 10
MF 11
MF 12
MF 13
MF 14
MF 15
MF 16
MF 17
MF 18
MF 19
MF 20
MF 21
MF 22
MF 23
MF 24
MF 25
MF 26
MF 27
MF 28
MF 29
MF 30
MF 31
MF 32
MF 33
MF 34
MF 35
MF 36
MF 37
MF 38
MF 39
MF 40
MF 41
MF 42
MF 43
MF 44
MF 45
MF 46
MF 47
MF 48
MF 49
MF 50
MF 51
MF 52
MF 53
MF 54
MF 55
MF 56
MF 57
MF 58
MF 59
MF 60

Ivas SpA © All Rights Reserved

Prodotti e Tecniche / Products and Techniques:



Effetto Materico
Materic Effect
MF 18



Effetto a Pois
Pois Effect
MF 04 Factor Fine



Effetto Las Vegas
Las Vegas Effect
MF 02 +Metal Light



Effetto Cemento
Cement Effect
MF 07

design

decorative finishes

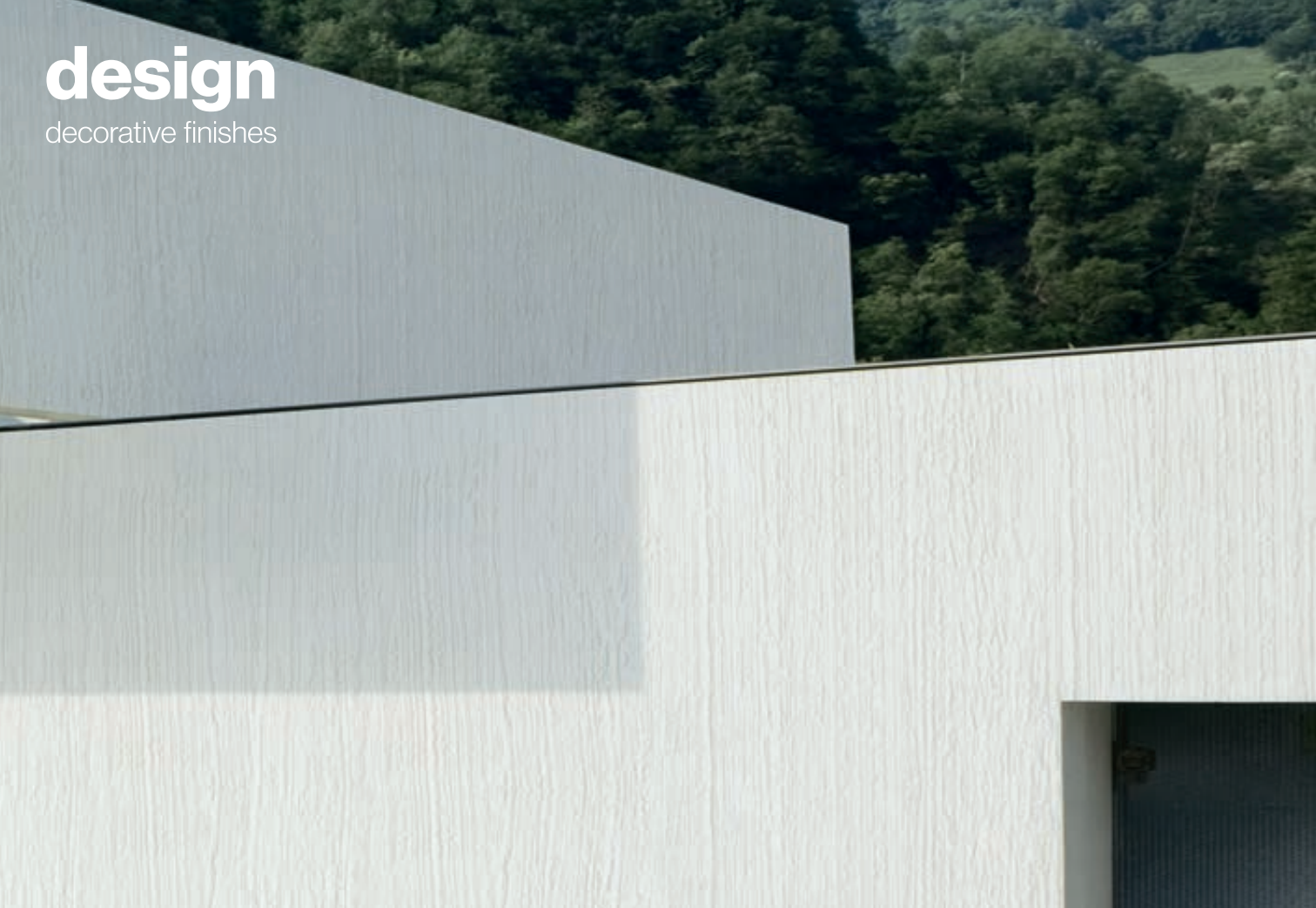


Photo: Metro Tex - Effetto Urban Design / Urban Design effect

finiture decorative materiche

textured decorative finishes

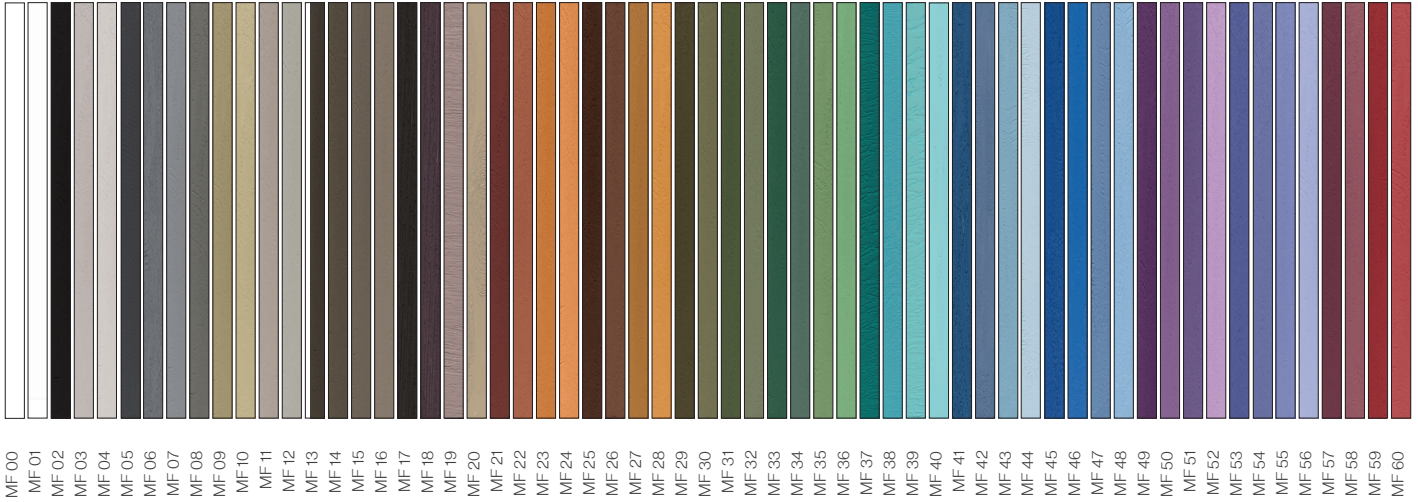
Rivestimento decorativo con granuli di marmo a rilievo per finiture materiche; dall'aspetto opaco, traspirante, all'acqua.
Per esterno.

Thick decorative texture coating with marble granules for materic effects; matt finish; breath
For exterior use.

metro tex

Rivestimento materico texturizzato

Colori / Colours:

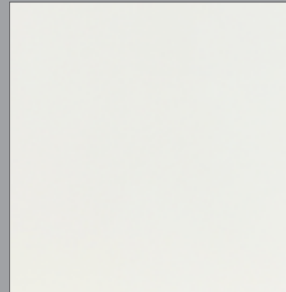


Ivas SpA © All Rights Reserved

Tecniche / Techniques:



Effetto Striato
Streaked Effect
MF 04



Effetto Schiacciato
Crushed Effect
MF 01

design

decorative finishes



Photo: Metro Materik - Effetto pennello / Brush effect

finiture decorative materiche

textured decorative finishes

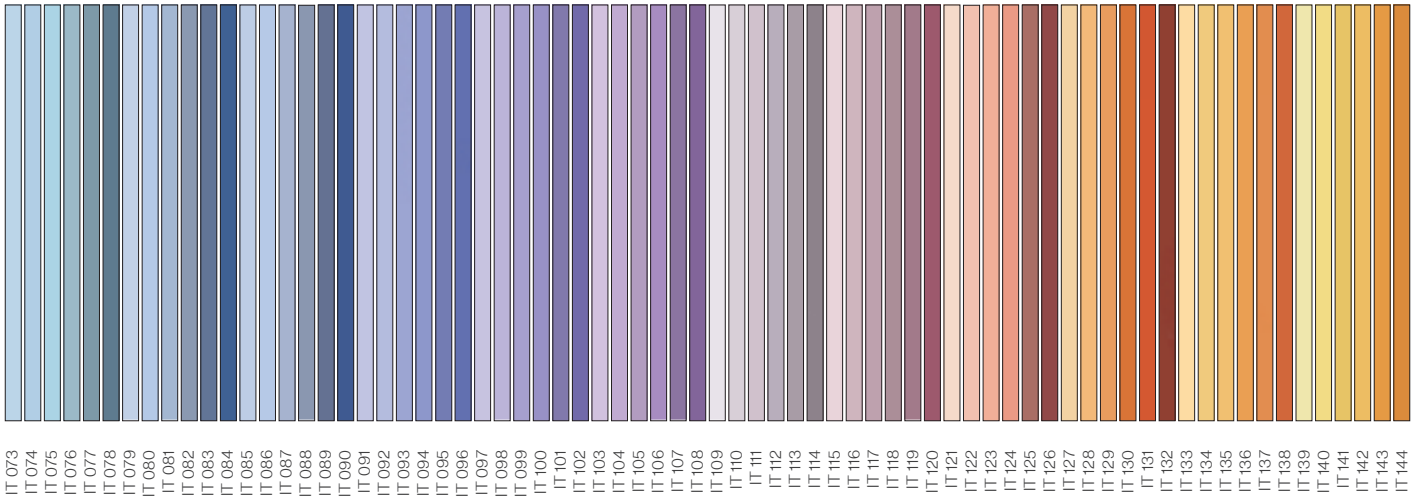
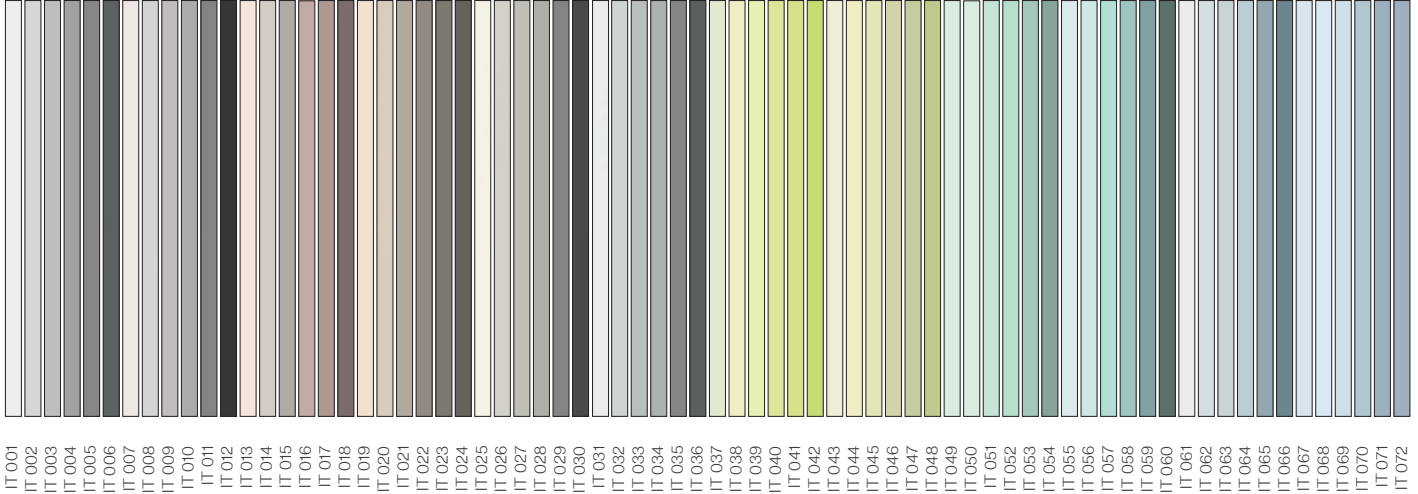
Finitura decorativa in rilievo, lavabile, traspirante, ad altissima resistenza all'abrasione, disponibile in oltre 3.700 tinte.
Per interno ed esterno.

A decorative embossed finish that is washable, breathable, highly resistant to abrasion and available in over 3,700 colours.
For interior and exterior use.

METRO MATERIK

Soffio di materia

Colori / Colours:



design

decorative finishes



Photo: Harmony - Effetto guantato / Gloved effect

velature antichizzanti

antique glazing

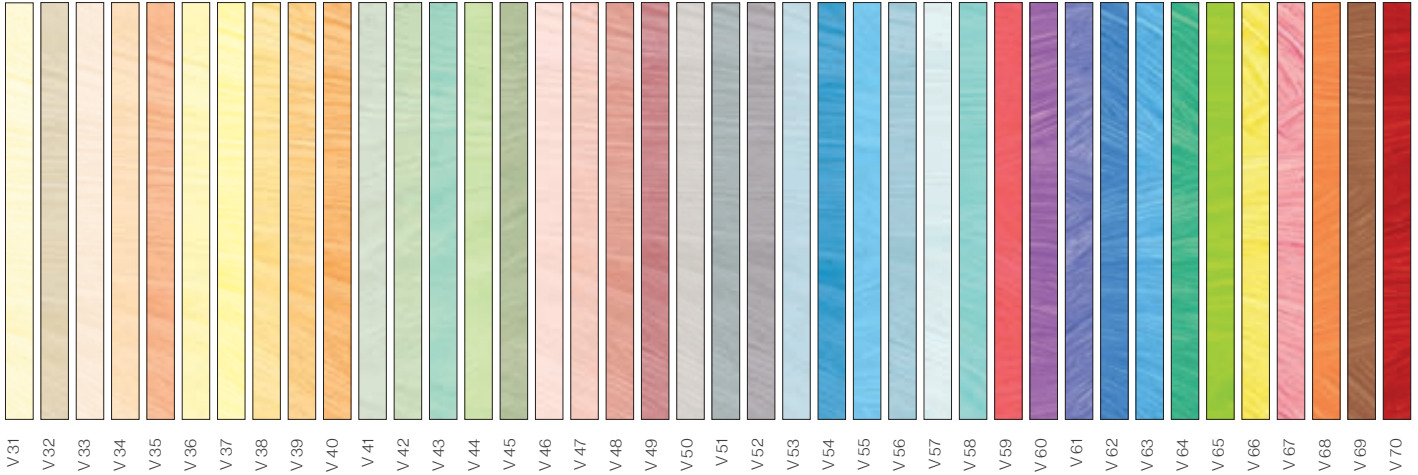
Finitura acril-silossanica a effetto velato, traspirante, ideale per edifici di interesse storico, all'acqua.
Per interno ed esterno

Acrylic-siloxan finishing coat with a hazy effect, breathable, ideal for historic buildings, water-based.
For interior and exterior use.

HARMONY

Velatura Chic

Colori / Colours:

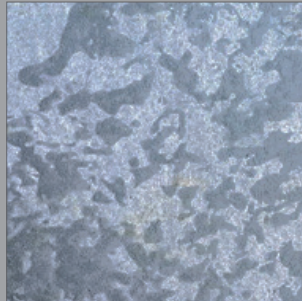


Ivas SpA © All Rights Reserved

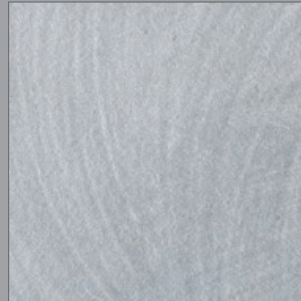
Tecniche / Techniques:



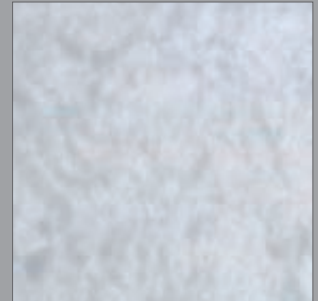
Effetto Pennellato
Brushed Effect
V 51



Effetto Spugnato
Sponged Effect
V 51



Effetto Guantato
Gloved Effect
V 51



Effetto Tamponato
Padded Effect
V 51

design

decorative finishes



Photo: Materia Romana + Materia Romana Finitura - Effetto Travertino / Travertino effect

finiture decorative a base calce

decorative lime finishes

Intonaco naturale a base calce e finitura semi-trasparente ideali per riprodurre il caratteristico effetto decorativo della roccia calcarea "travertino romano" ed esaltarne le sfumature cromatiche e le venature tipiche.
Per interno ed esterno.

A natural lime-based plaster and semi-transparent finish, ideal for reproducing the distinctive decorative finish of "Roman travertine" limestone and enhance its typical shades of colour and veining.
For interior and exterior use.

MATERIA ROMANA FINITURA

Travertino imperiale

Colori / Colours:



MA 01



MA 02



MA 03



MA 04



MA 05



MA 06

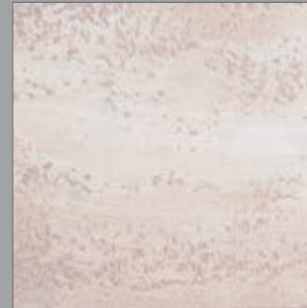
Tecniche / Techniques:



Concrete + Materia Romana Finitura MA 00



Effetto fugato
Effect with joints
Concrete + Materia Romana Finitura MA 02



Effetto travertino
Travertino effect
Concrete + Materia Romana Finitura MA 03

Urban Effects - Materia Urbana è la linea di effetti materici della divisione decorativi Metropolis® by Ivas, una collezione di suggestioni metropolitane che rivoluziona per sempre il settore decorativi per interni. Gli Urban Effects sono effetti carichi di vitalità, dinamismo e cruda materia, pensati e realizzati per esaltare l'estro dei designer e stimolare il talento dei decoratori. Combinando alcuni prodotti della linea Design Decorative Finishes e utilizzando specifiche tecniche decorative, gli Urban Effects prendono vita, ricreando negli ambienti interni le atmosfere, lo stile e il vissuto degli esterni metropolitani.

Le barriere culturali e stilistiche si abbattano nel momento in cui nascono pareti nuove.

Urban Effects - Materia Urbana è una linea costituita esclusivamente da prodotti all'acqua, eco-compatibili, esenti da solventi.

Urban Effects - Materia Urbana is the Metropolis line of textured effects and metropolitan suggestions: a revolution in the interior decorating field. The Urban Effects are full of vitality, energy and raw matter, created with the purpose of intensifying the designers' inspiration and stimulating the decorators' talent. The Urban Effects come to life by combining some of the products of the Decorative Design line and thanks to the use of specific application techniques, they recreate in the interior spaces the atmosphere, the style and the experience of the metropolitan outdoors. The cultural and stylistic barriers are knocked down when new walls are created.

Urban Effects - Materia Urbana is a line composed exclusively by water based, eco-friendly and solvent-free products.

urban effects

materia urbana

effetti decorativi materici per **interno**
textured decorative effects for **indoor**

urban effect

materia urbana

Texture materiche

Materic Texture

Rivestimenti materici acril-silossanici a spessore, idrorepellenti, finiti con pitture decorative traspiranti, lavabili, all'acqua.

Thick acrylic-siloxane textured coatings, water repellent, finished with decorative breathable, washable, water-based paints.



BRONX

Ruvido, violento, pericoloso, puro: **Bronx** è il "ghetto" per eccellenza, il luogo in cui la cruda realtà incontra l'epica. L'effetto **Bronx** ricrea il fascino della periferia e la ruvidezza dei suoi vicoli malconci, trasformando ogni parete in una scenografia di Scorsese.

Rough, violent, dangerous, pure: the **Bronx** is the original ghetto. It is where the crude facts meet the epic. The **Bronx** effect recreates the fascination of the suburbs and the ruggedness of its battered streets, transforming every wall into a Scorsese's scenery.



Tecniche e Colori / Techniques and Colours:

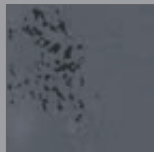
BRONX 1



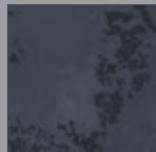
MF 02 + SC 01



MF 02 + SC 02



MF 02 + SC 03



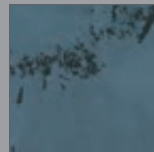
MF 02 + SC 04



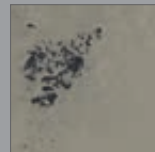
MF 02 + SC 05



MF 02 + SC 06



MF 02 + SC 07

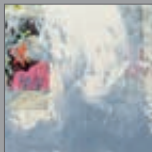


MF 02 + SC 08

BRONX 2



MF 01 + SC 01



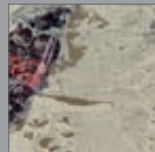
MF 01 + SC 02



MF 01 + SC 03



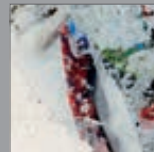
MF 01 + SC 04



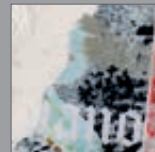
MF 01 + SC 05



MF 01 + SC 06



MF 01 + SC 07



MF 01 + SC 08

urban effect

materia urbana

Texture materiche

Materic Texture

Rivestimenti materici acril-silossanici a spessore, idrorepellenti, finiti con pitture decorative traspiranti, lavabili, all'acqua.

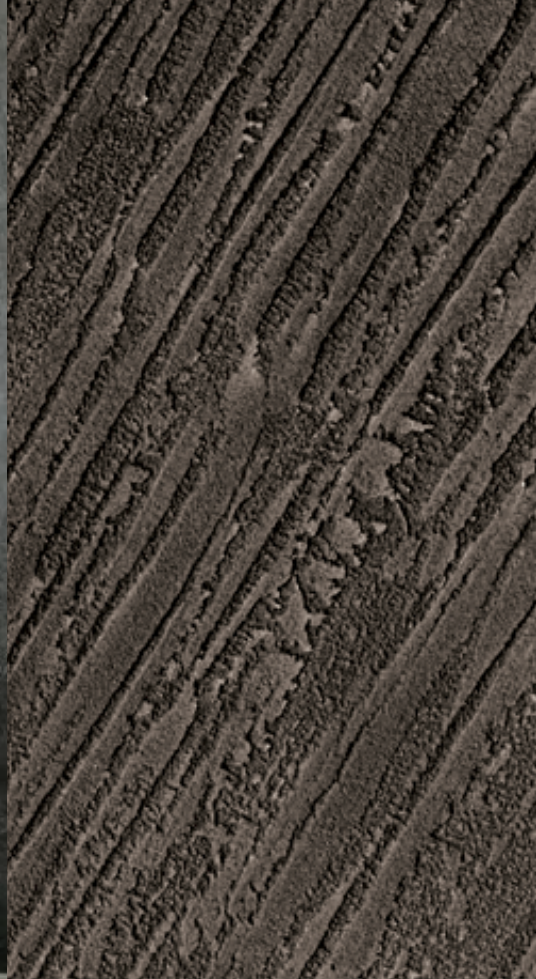
Thick acrylic-siloxane textured coatings, water repellent, finished with decorative breathable, washable, water-based paints.



BROOKLYN

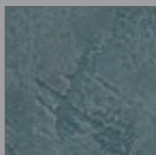
Bar clandestini, proibizionismo, Seconda Rivoluzione Industriale: **Brooklyn** è simbolo di un'epoca che unisce due mondi e due secoli differenti. L'effetto **Brooklyn** imprigiona per sempre colori e materie ricreando l'atmosfera proibita di un luogo e di un tempo leggendari.

Illegal bars, prohibitionism, the Second Industrial Revolution: **Brooklyn** symbolizes an era unite two different worlds and two different centuries. The **Brooklyn** effect permanently imprisons colours and materials, recreating the prohibited atmosphere of a legendary place and time.

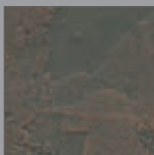


Tecniche e Colori / Techniques and Colours:

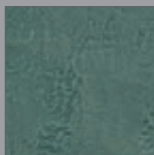
BROOKLYN 1



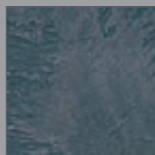
MF 01 + HM 01



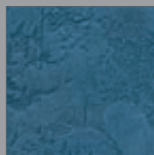
MF 01 + HM 02



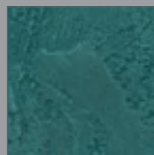
MF 01 + HM 03



MF 01 + HM 04



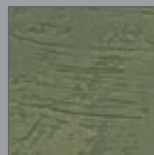
MF 01 + HM 05



MF 01 + HM 06



MF 01 + HM 07

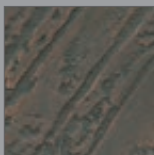


MF 01 + HM 08

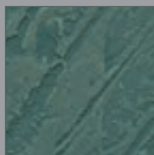
BROOKLYN 2



MF 01 + HM 01



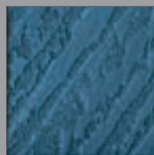
MF 01 + HM 02



MF 01 + HM 03



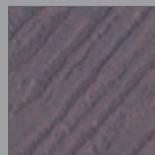
MF 01 + HM 04



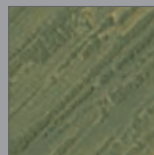
MF 01 + HM 05



MF 01 + HM 06



MF 01 + HM 07



MF 01 + HM 08

urban effect

materia urbana

Texture materiche

Materic Texture

Rivestimenti materici acril-silossanici a spessore, idrorepellenti, finiti con pitture decorative traspiranti, lavabili, all'acqua.

Thick acrylic-siloxane textured coatings, water repellent, finished with decorative breathable, washable, water-based paints.



HARLEM

Cori gospel, ritmi afro, battiti hip-hop: **Harlem** è il regno delle mescolanze, l'incontro delle etnie, lo sprigionarsi dei sapori del Sud. L'effetto **Harlem** rievoca il clima intenso, la poesia del suono, il calore umano impressi in ogni angolo rigorosamente "black".

Gospel choirs, afro rhythms, hip-hop beats: **Harlem** is the kingdom of mixtures, the meeting of cultures, the release of the flavours of the south. The **Harlem** effect evokes the intense climate, the poetry of sound and the human warmth impressed in each rigorously 'black' corner of the earth.

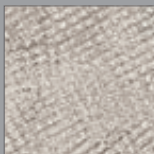


Tecniche e Colori / Techniques and Colours:

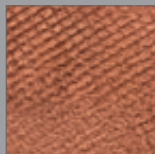
HARLEM 1



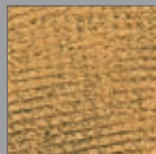
MF 01+MD GOLD
+HM 02



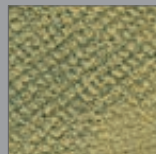
MF 01+MD 40
+HM 01



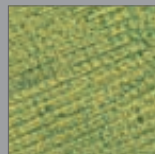
MF 01+MD 08
+HM 02



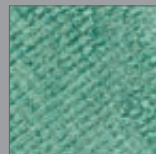
MF 01+MD GOLD
+HM 03



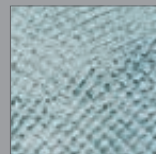
MF 01+MD GOLD
+HM 05



MF 01+MD GOLD
+HM 06



MF 01+MD 40
+HM 06



MF 01+MD 02
+HM 05

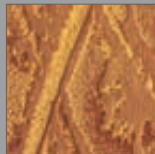
HARLEM 2



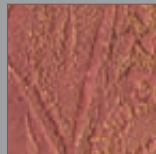
MF 01+IP 475
+MD GOLD



MF 01+IP 467
+MD GOLD



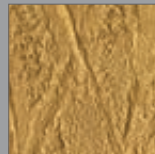
MF 01+IP 484
+MD GOLD



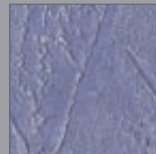
MF 01+IP 499
+MD GOLD



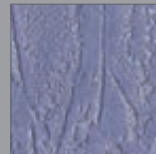
MF 01+IP 475+
MD 08



MF 01+IP 489
+MD GOLD



MF 01+IP 440
+MD 40



MF 01+IP 511
+MD 40

urban effect

materia urbana

Texture materiche

Materic Texture

Rivestimenti materici acril-silossanici a spessore, idrorepellenti, finiti con pitture decorative traspiranti, lavabili, all'acqua.

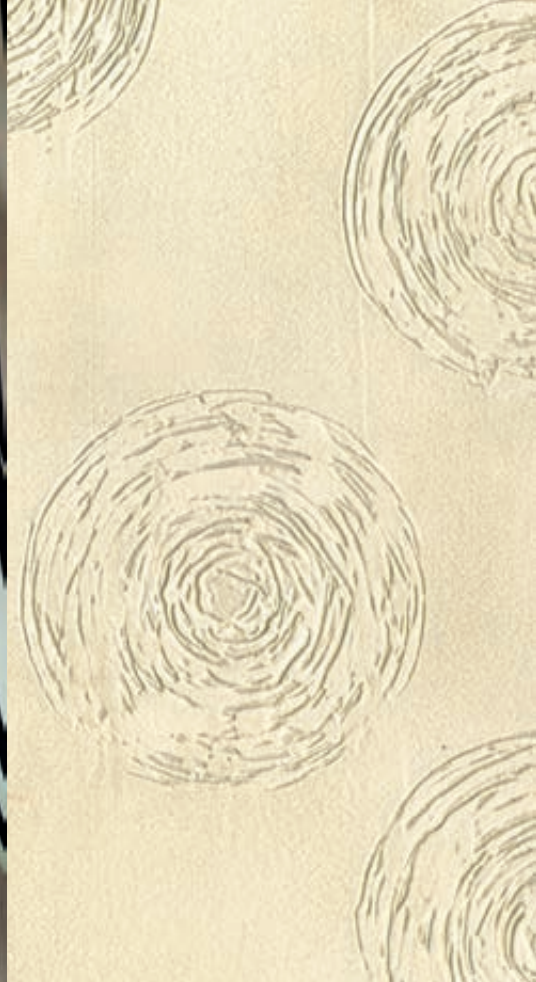
Thick acrylic-siloxane textured coatings, water repellent, finished with decorative breathable, washable, water-based paints.



MANHATTAN

Verticale, lussuosa, snob: **Manhattan** rappresenta il crocevia delle tendenze, lo specchio delle avanguardie. L'effetto **Manhattan** racchiude in sé la luce delle grandi vetrate di Soho, il luccichio della mondanità, l'esclusiva vanità dei loft più chic del pianeta.

Vertical, luxurious, snobbish: **Manhattan** is the crossroads of trends, the mirror of the avant-garde. The **Manhattan** effect encloses the lights of the great windows in Soho, the sparkle of society life, the exclusive vanity of the most stylish lofts of the planet.

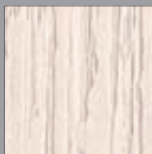


Tecniche e Colori / Techniques and Colours:

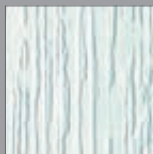
MANHATTAN 1



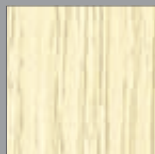
MF 01 + LV 36



MF 01 + LV 81



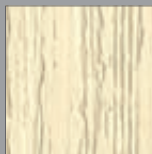
MF 01 + LV 44



MF 01 + LV 28



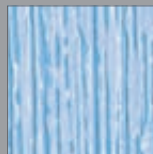
MF 01 + LV 60



MF 01 + LV 20

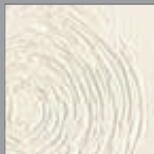


MF 01 + LV 73

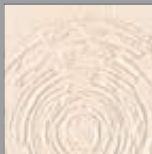


MF 01 + LV 42

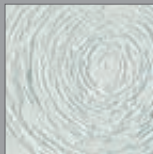
MANHATTAN 2



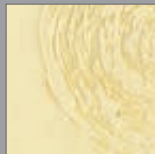
MF 01 + LV 36



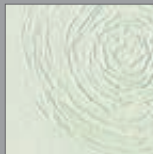
MF 01 + LV 81



MF 01 + LV 44



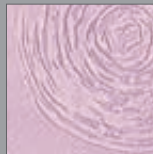
MF 01 + LV 28



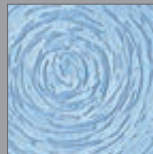
MF 01 + LV 60



MF 01 + LV 20



MF 01 + LV 73



MF 01 + LV 42

urban effect

materia urbana

Texture materiche

Materic Texture

Rivestimenti materici acril-silossanici a spessore, idrorepellenti, finiti con pitture decorative traspiranti, lavabili, all'acqua.

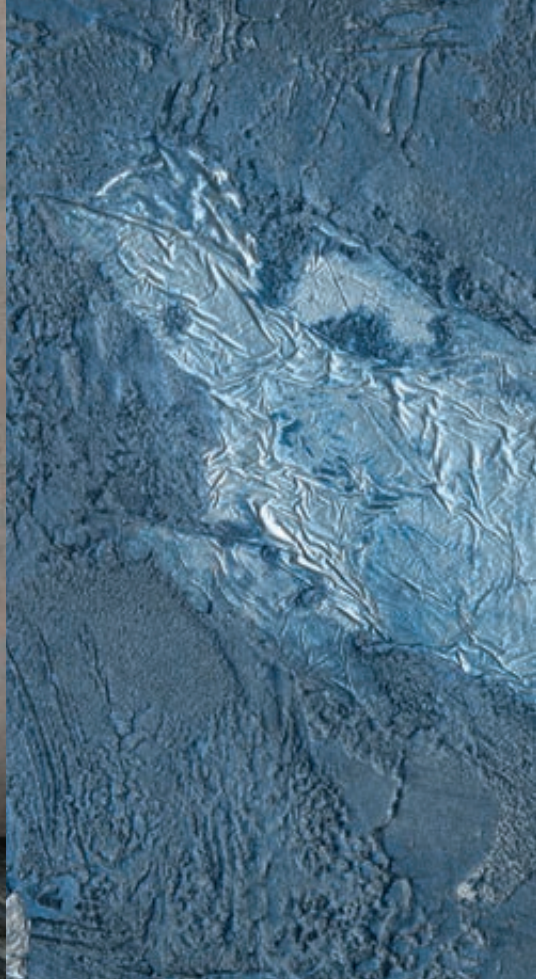
Thick acrylic-siloxane textured coatings, water repellent, finished with decorative breathable, washable, water-based paints.



BERLIN

Malinconica, sofferente, moderna: Berlino è la città simbolo del XX secolo, una metropoli graffiata dalla storia e allo stesso tempo proiettata nel futuro. L'effetto **Berlin** illumina lo spazio ricordando il peso della materia, mescola gioia e dolore, terra e metallo, passato e futuro.

Melancholic, afflicted, modern: **Berlin** a city that symbolizes the 20th century is a metropolis scratched by history and, at the same time, projected towards the future. The **Berlin** effect illuminates space, remembering the weight of the material, mixing joy and sorrow, earth and metal, past and future.

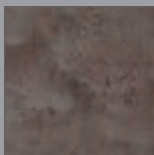


Tecniche e Colori / Techniques and Colours:

BERLIN 1



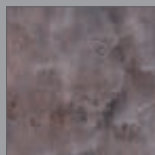
MF 01+HM 01
+LV 36



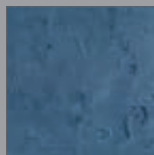
MF 01+HM 02
+LV 36



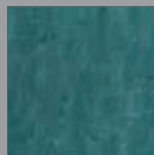
MF 01+HM 03
+LV 36



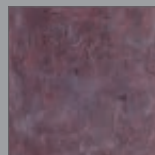
MF 01+HM 04
+LV 36



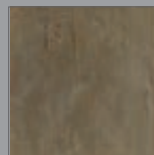
MF 01+HM 05
+LV 36



MF 01+HM 06
+LV 36

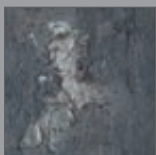


MF 01+HM 07
+LV 36

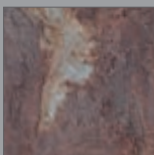


MF 01+HM 08
+LV 36

BERLIN 2



MF 01+HM 01
+LV 36



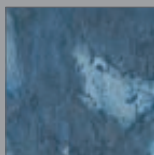
MF 01+HM 02
+LV 36



MF 01+HM 03
+LV 36



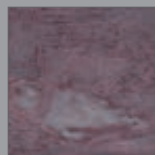
MF 01+HM 04
+LV 36



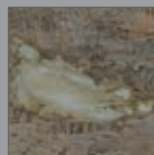
MF 01+HM 05
+LV 36



MF 01+HM 06
+LV 36



MF 01+HM 07
+LV 36



MF 01+HM 08
+LV 36

urban effect

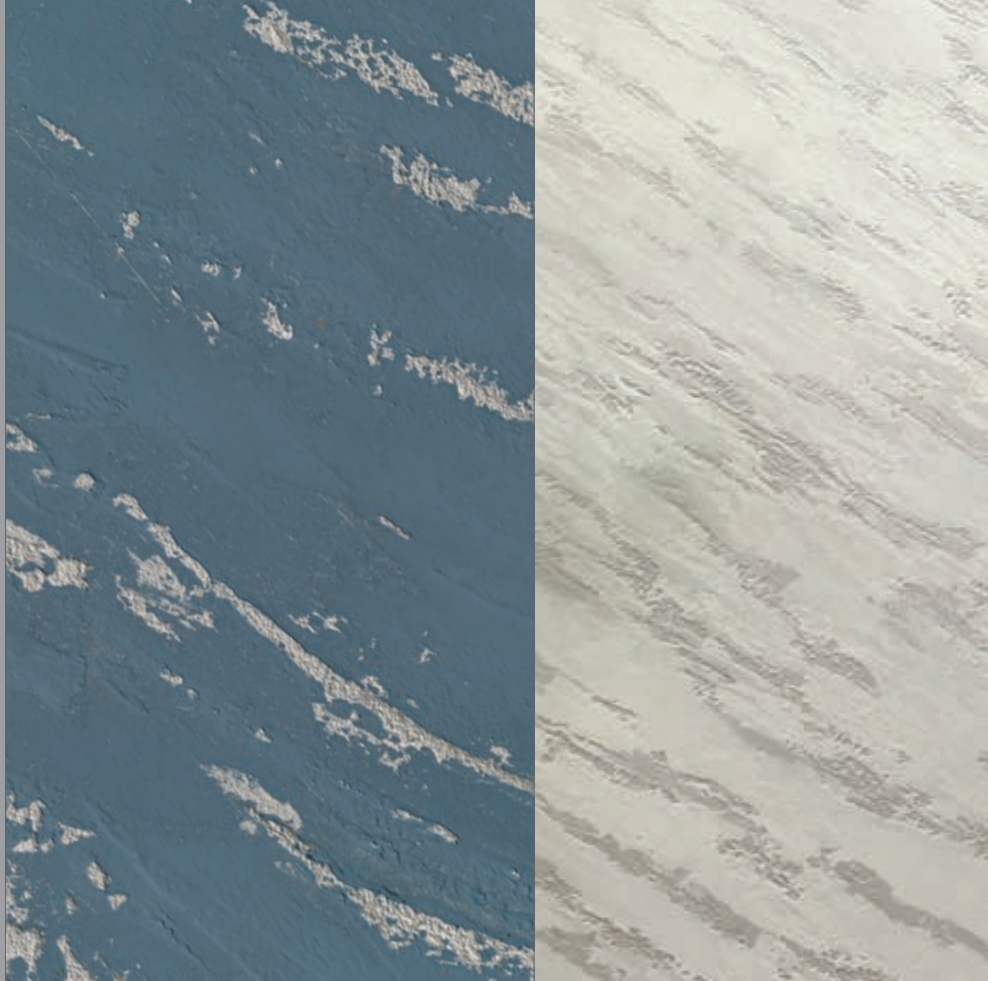
materia urbana

Texture materiche

Materic Texture

Rivestimenti materici acril-silossanici a spessore, idrorepellenti, finiti con pitture decorative traspiranti, lavabili, all'acqua.

Thick acrylic-siloxane textured coatings, water repellent, finished with decorative breathable, washable, water-based paints.



ISTANBUL

Sfarzosa, caotica, sensuale, lucente: **Istanbul** è il ponte fra Oriente e Occidente, un insieme convulso di oro e argento, prosperità e polvere.

L'effetto **Istanbul** traduce questa molteplicità esprimendo fascino e caos, ricchezza e miseria, materia e splendore.

Lavish, chaotic, sensual and dazzling: **Istanbul** is the bridge between East and West, a convulsive blend of gold and silver, prosperity and dust. The **Istanbul** effect represents this multiplicity in an expression of fascination and chaos, wealth and misery, material and splendour.

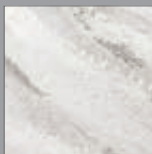


Tecniche e Colori / Techniques and Colours:

ISTANBUL 1



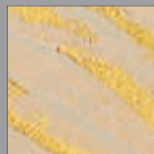
MF 01+MD GOLD
+SC 00



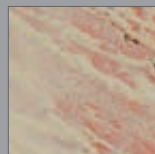
MF 01+MD 40
+SC 00



MF 01+MD 08
+SC 00



MF 01+MD GOLD
+SC 05



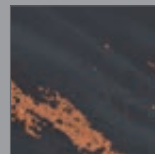
MF 01+MD 08
+SC 05



MF 01+MD 40
+SC 02

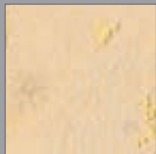


MF 01+MD 08
+SC 07



MF 01+MD 08
+SC 04

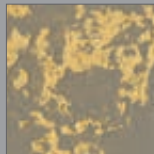
ISTANBUL 2



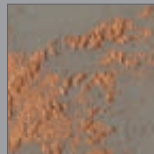
MF 01+MD 08
+SC 06



MF 01+MD 08
+SC 06



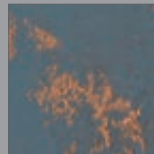
MF 01+MD GOLD
+SC 08



MF 01+MD 08
+SC 08



MF 01+MD 08
+SC 01



MF 01+MD 08
+SC 07



MF 01+MD 40
+SC 03



MF 01+MD 40
+SC 04

urban effect

materia urbana

Texture materiche

Materic Texture

Rivestimenti materici acril-silossanici a spessore, idrorepellenti, finiti con pitture decorative traspiranti, lavabili, all'acqua.

Thick acrylic-siloxane textured coatings, water repellent, finished with decorative breathable, washable, water-based paints.



JAKARTA

Misteriosa, millenaria, seducente, mista: **Jakarta** è eternamente sospesa tra ricordi orientali e recenti sapori coloniali. L'effetto **Jakarta** ripercorre la via dei metalli preziosi e i riflessi di un oriente lontano, raccontando la fusione tra antichi luccichii e vissuto contemporaneo.

Mysterious, millenary, seducing, mixed: **Jakarta** is eternally suspended between oriental memories and recent colonial flavours. The **Jakarta** effect retraces the precious metal route and nuances of the Far East that tell how ancient sparkles blend with contemporary life.



Tecniche e Colori / Techniques and Colours:

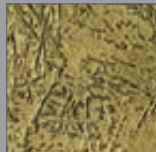
JAKARTA 1



MF 01+HM 01
+MD GOLD



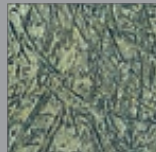
MF 01+HM 02
+ MD GOLD



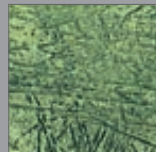
MF 01+HM 03
+ MD GOLD



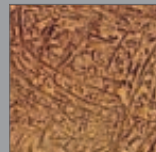
MF 01+HM 04
+ MD GOLD



MF 01+HM 05
+ MD GOLD



MF 01+HM 06
+ MD GOLD



MF 01+HM 07
+ MD GOLD

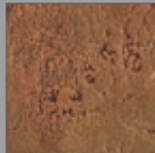


MF 01+HM 08
+ MD GOLD

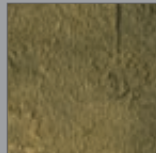
JAKARTA 2



MF 01+HM 01
+MD GOLD



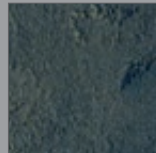
MF 01+HM 02
+MD GOLD



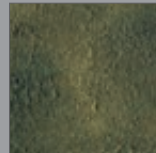
MF 01+HM 03
+ MD GOLD



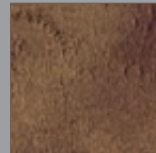
MF 01+HM 04
+MD GOLD



MF 01+HM 05
+MD GOLD



MF 01+HM 06
+ MD GOLD



MF 01+HM 07
+MD GOLD



MF 01+HM 08
+ MD GOLD

Texture Design propone una collezione di superfici decorative e rivestimenti materici ad alto valore estetico per le architetture di facciata.

Le finiture **Texture Design** sono applicabili direttamente sulle murature esterne, opportunamente trattate, sulle rasature armate e sui sistemi di isolamento ed efficientamento energetico TermoK8®, interpretando così la tecnologia a cappotto come sistema di qualificazione energetica ed estetica di un edificio ed esprimendo la sintesi tra know-how tecnico-progettuale e una nuova definizione di bellezza architettonica: da questa fusione nascono sistemi a cappotto che garantiscono le migliori performance energetiche, tecnologiche ed estetiche per gli edifici.

Texture Design è la scelta ideale per aumentare il valore architettonico dei progetti contemporanei e per realizzare edifici unici, sorprendenti, interamente personalizzati.

Texture Design offers a collection of highly attractive decorative surfaces and textured coatings for façade architectures.

Texture Design finishes can be applied directly to suitably treated external walls, to reinforced skim coats and to TermoK8® thermal insulation-energy efficiency systems, thus interpreting ETICS technology as a synthesis of technical and design expertise and a new definition of architectural beauty: this combination results in external thermal insulation systems that provide the best energy, technological, and aesthetic performance for buildings.

Texture Design is the ideal choice to increase the architectural value of contemporary projects and to create unique, surprising, fully customised buildings.



texture design

effetti decorativi materici
per **esterno**

textured decorative effects
for **outdoor** use



Factor Ext +
Hot Metal Ext

texture
design

corten

Corten trova ispirazione nell'ossidazione del ferro e dei metalli proponendo per le superfici un effetto ruggine patinato brillante, disomogeneo e naturale.

Corten is a texture that finds inspiration in the oxidation of iron and metals offering a glossy, uneven and natural patinated rust effect for the surfaces.

Factor Ext +
Soul Cement Ext

texture
design



cemento dilavato

Cemento dilavato svela il fascino del calcestruzzo vissuto e delicatamente invecchiato, conferisce all'edificio uno stile contemporaneo con un effetto liscio e vellutato.

Washed cement reveals the charm of delicately aged concrete and gives the building a contemporary style with a smooth and velvety effect.



Factor Ext +
Hot Metal Ext

texture
design

cemento spazzolato

Cemento spazzolato interpreta la texture lievemente materica del microcemento di memoria industriale, traducendo sulle superfici il fascino delle variazioni cromatiche tono su tono e l'immagine di una sostanza forte, possente e duratura.

Brushed concrete interprets the slightly material texture of industrial microcement, giving the charm of tone-on-tone chromatic variations and the image of a strong, powerful and lasting substance on the surfaces.



Factor Ext +
Materia Romana Finitura

texture
design

travertino

Travertino definisce la consistenza delle rocce calcaree italiane e il leggendario stile dell'antica Roma trasponendo in facciata i luoghi, la storia e la sostanza di una materia senza tempo.

Travertino defines the texture of Italian limestone rocks and the legendary style of ancient Rome by transposing on the façade the places, the history and the substance of a timeless material.



Factor Ext +
Sensation

texture
design

legno

Legno racconta l'essenza del tessuto vegetale: colori, densità e trama delle venature lo rendono un rivestimento materico altamente personalizzabile, un gioco di sfumature 3d per architetture ispirate alla forza generatrice della natura.

Wood recounts the essence of the plant tissues: colors, density and texture of the veins make it a highly customizable coating, a game of 3d shades for architectures which are inspired by the generating force of nature.



Metro Tex

texture
design

schacciato

Elegante e raffinato, può fungere sia da finitura a rasare sia da base a spessore per successive finiture ad alto contenuto tecnologico: fotocatalitiche autopulenti (tecnologia clean) o a effetto barriera idrofobizzante (tecnologia dry).

Elegant and refined, it can act both as a smooth finish and as a thick base for high-tech finishes: self-cleaning photocatalytic (clean technology) or hydrophobic barrier effect (dry technology).



Metro Tex

texture
design

striato

Striato è la materia tridimensionale che esalta i giochi d'ombra. Striato è un effetto che anima le architetture di facciata e trova compimento ideale nello stile total white.

Streaked is the three-dimensional material enhanced by its shadow effects. Streaked is an effect that animates the façade architecture and finds its ideal completion in the total white style.

Factor Ext +
Metro Materik +
Metro Glitter



texture
design

sabbiato opaco/glitterato

Sabbiato glitterato aggiunge alla texture Sabbiato Opaco il fascino dell'arenile marino: piccoli cristalli di luce s'inseriscono delicatamente in un raffinato manto sabbioso.

Glittery sandblasted adds to Matt Sandblasted texture the charm of the sea shore: small crystals of light are delicately inserted on a refined sandy mantle.

Decorative Resins è la linea di eco-resine per pavimenti e parete Metropolis by IVAS. A seconda della tipologia di ciclo scelto, le resine consentono molteplici possibilità creative: effetti minimal, contemporanei, materici, venati, multicromatici, brillanti, perlescenti, vetrificati, lucidi, opachi, permettendo soluzioni coordinate pavimento/parete di alto design. Le resine Metropolis rappresentano la soluzione di più alto pregio per la decorazione e l'arredamento di interni, formulate per cambiare la percezione di uno spazio, proiettando pavimenti e pareti nel futuro delle superfici.

Decorative Resins è una linea costituita esclusivamente da prodotti all'acqua, ecocompatibili, esenti da solventi.

Decorative Resins is the line of decorative resins for walls and floorings from the Metropolis By Ivas division. The Resins products are suitable for creating any type of stylistic-architectural fantasy, by offering multiple creative possibilities: textured, veined, multi-chromatic, shiny, pearly, transparent, polished or matt effects. The versatility of these products allows co-ordinated floor/wall solutions to be achieved, according to the most up-to-date trends in interior decorating. The Resins line ultimately represents the most prestigious solution for décor and interior decoration, it is designed to change the perception of a space, projecting floors and walls into the future of substance and colours.

Decorative Resins is a line composed exclusively by water based, eco-friendly and solvent-free products.



resins

decorative resins

resins

decorative resins

Ciclo di resine cementizie

Cement-based resins system

Ciclo a spessore a base di eco-resine cementizie, traspiranti, non ingiallenti, resistenti all'abrasione; finito con resina poliuretanica all'acqua.

Per pavimenti e pareti.

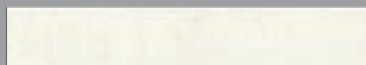
Thick cement-based resins system eco-friendly and breathable. Non yellowing, resistant to abrasion, finished with water-based polyurethane resin. For walls and floors.

Ciclo Metrostone - Effetto ossidato

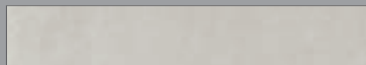
Metrostone System - Oxidised effect



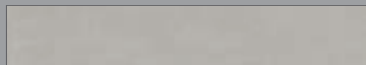
Tono su tono / Tone on tone:



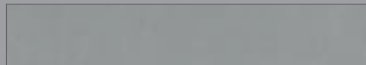
MS 00



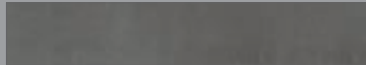
MS 01



MS 02



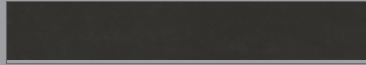
MS 04



MS 05



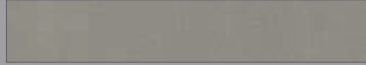
MS 06



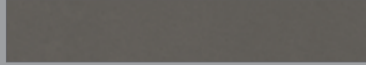
MS 07



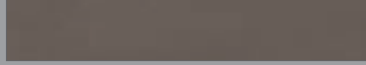
MS 08



MS 09



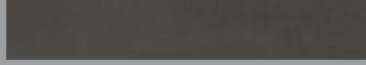
MS 10



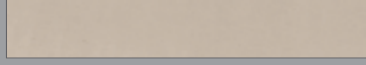
MS 11



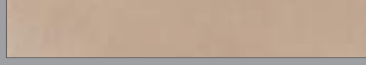
MS 12



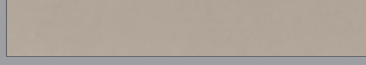
MS 13



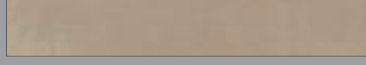
MS 14



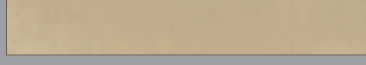
MS 15



MS 16



MS 17



MS 18

METROSTONE

Effetto cemento liscio

Per pavimenti e pareti

Smooth cement effect

For floors and walls

MS 03



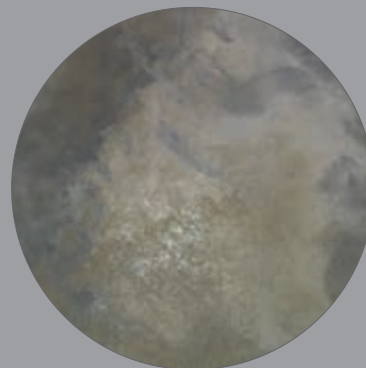
Effetto ossidato

Per pavimenti e pareti

Oxidised effect

For floors and walls

MS 05 + MS 16 + HM 08



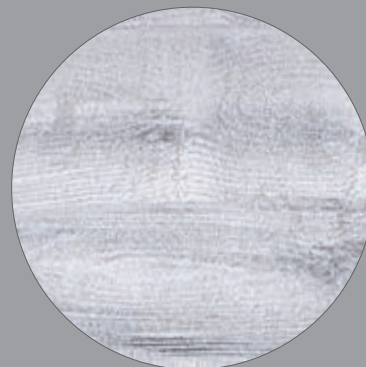
Effetto vintage decapè

Per pareti

Vintage decapè effect

For walls

MS 00 + HM 01 + SHINE Silver



resins

decorative resins

Ciclo di resine cementizie

Cement-based resins
system

METROSTONE

Ciclo Metrostone
Effetto cemento liscio

Metrostone System - Smooth cement effect



Ciclo di resine cementizie

Cement-based resins
system

METROSTONE



Ciclo Metrostone
Effetto cemento liscio

Metrostone System - Smooth cement effect

resins

decorative resins

Ciclo di resine cementizie

Cement-based resins
system

METROSTONE

Ciclo Metrostone
Effetto cemento liscio

Metrostone System - Smooth cement effect



Ciclo di resine cementizie

Cement-based resins
system

METROSTONE

Ciclo Metrostone
Effetto cemento liscio

Metrostone System - Smooth cement effect



ITALIANO

Le pitture e le resine decorative Metropolis by Ivas sono prodotti all'acqua, eco-compatibili, esenti da solventi, tutti rigorosamente ideati e fabbricati in Italia, nello stabilimento produttivo di Ivas Spa, azienda leader del settore pitture e vernici, certificata UNI EN ISO 9001. Le varianti cromatiche presentate in questo catalogo sono riproduzioni fotografiche degli originali, hanno quindi valore indicativo. I prodotti Metropolis by Ivas presentati in questo catalogo sono oggetto dei corsi Metropolis presso Academy, centro di formazione professionale di Gruppo Ivas, certificato UNI EN ISO 9001. Per maggiori informazioni sui prodotti, sulle tecniche di posa, sulle applicazioni in esterno, sui corsi di formazione e altro, consultare il sito web www.metropolis-ivas.com o contattare il servizio di assistenza clienti di Ivas Spa.

Tutti i contenuti (testo, grafica e immagini) presenti all'interno di questo documento sono protetti dal diritto d'autore e non sono riproducibili salva autorizzazione scritta dal titolare.

ENGLISH

The Metropolis by Ivas paints and decorative resins are environmentally friendly, water-based products that are completely solvent free. They are manufactured exclusively in the Italian Ivas Spa production plant, the UNI EN ISO 9001 certified leader in the field of paint. The colours presented in this catalogue are photographs of the originals and are thus purely indicative. Academy, the Gruppo Ivas UNI EN ISO 9001 certified professional training centre, offers courses about the Metropolis by Ivas products presented herein. For further information on the products, installation techniques, outdoor applications, training courses and anything else, log onto www.metropolis-ivas.com or contact Ivas Spa customer service.

All content (text, graphics and images) is protected by copyright. Reproduction is prohibited without prior written authorization from the owner.

ESPAÑOL

Las pinturas y resinas decorativas Metropolis by Ivas son productos al agua, eco-compatibles, sin disolventes; todas ellas han sido rigurosamente concebidas y fabricadas en Italia, en las instalaciones de producción de Ivas Spa, empresa líder del sector pinturas y barnices, certificada UNI EN ISO 9001. Las variantes cromáticas presentadas en este catálogo son reproducciones fotográficas de los originales, de modo que tienen un valor indicativo. Los productos Metropolis by Ivas presentados en este catálogo son objeto de los cursos Metropolis en Academy, centro de formación profesional de Gruppo Ivas, certificado UNI EN ISO 9001. Para más información sobre los productos, las técnicas de aplicación, los usos en exteriores, los cursos de formación, etc., consultar la web www.metropolis-ivas.com o contactar al servicio de asistencia al cliente de Ivas Spa.

Todos estos contenidos (texto, graficas e imagenes) estan protegidos por los derechos de autor y no pueden ser reproducidos sin la autorizacion previa y por escrito del propietario.

FRANÇAIS

Les peintures et les résines de décoration Metropolis by Ivas sont des produits à l'eau, éco-compatibles et sans solvants, tous conçus et produits en Italie dans les établissements de Ivas Spa, entreprise leader dans le secteur des peintures et des vernis, certifiée UNI EN ISO 9001. Les variantes chromatiques présentées dans ce catalogue sont des reproductions photographiques des originaux, ainsi doivent-elles être considérées comme indicatives. Les produits Metropolis by Ivas présentés dans ce catalogue sont des objets des cours Metropolis du Academy, centre de formation professionnel de Gruppo Ivas, certifié UNI EN ISO 9001. Pour plus d'informations sur les produits, sur les techniques de pose, sur les applications en extérieur, sur les cours de formation et autre, consulter le site www.metropolis-ivas.com ou contacter le service d'assistance clients de Ivas Spa.

Tous ces contenus (texte, graphique et images) sont protégés par le droit d'auteur et ils ne peuvent être pas reproductibles, si non au moyen de l'autorisation préliminaire écrite du propriétaire

DEUTSCH

Die dekorativen Anstriche und Harze Metropolis by Ivas sind wasserlösliche, umweltfreundliche Produkte ohne Lösungsmittel, die alle ausnahmslos in Italien entwickelt und hergestellt werden, im Produktionswerk von Ivas Spa, Branchenführer für Anstriche und Lacke, zertifiziert UNI EN ISO 9001. Die in diesem Katalog vorgestellten Farbvarianten sind fotografische Wiedergaben der Originale und können von den tatsächlichen Produkten abweichen. Die Produkte Metropolis by Ivas, die in diesem Katalog vorgestellt werden, sind Gegenstand der Kurse Metropolis bei Academy, dem professionellen Ausbildungszentrum von Gruppo Ivas, mit Zertifikat UNI EN ISO 9001. Weitere Informationen zu den Produkten, den Verlegetechniken, den Außenanwendungen, den Ausbildungskursen und anderem finden Sie auf der Website www.metropolis-ivas.com oder wenden Sie sich bitte an den Kundendienst von Ivas Spa.

Alle Inhalte (Text, Grafik und Bilder) dieses Dokuments sind urheberrechtlich geschützt und dürfen nicht ohne schriftliche Genehmigung des Inhabers vervielfältigt werden.

Farby i żywice dekoracyjne Metropolis by Ivas są przyjaznymi dla środowiska produktami na bazie wody i nie zawierają rozpuszczalników. Wszystkie te produkty zostały opracowane i wyprodukowane we Włoszech według rygorystycznych norm - w zakładzie produkcyjnym firmy Ivas Spa, która uznawana jest za wiodącego przedstawiciela sektora farb i lakierów oraz która posiada certyfikację za zgodność z normą UNI EN ISO 9001. Odcienie kolorów przedstawione w tym katalogu stanowią reprodukcje fotograficzne kolorów oryginalnych, a zatem traktować je należy jako orientacyjne. Dla produktów Metropolis by Ivas przedstawionych w tym katalogu prowadzone są kursy Metropolis wAcademy - centrum szkoleń profesjonalnych Gruppo Ivas, posiadającym certyfikat za zgodność z normą UNI EN ISO 9001. Więcej informacji o naszych produktach, technikach nakładania, zastosowaniach zewnętrznych, szkoleniach itp. znaleźć można na stronie internetowej www.metropolis-ivas.com. Zachęcamy również do kontaktu z punktem obsługi klienta firmy Ivas Spa.

Wszystkie treści (tekst, elementy graficzne i obrazy) zawarte w niniejszym dokumencie chronione są prawem autorskim, a zatem obowiązują zakaz ich powielania bez pisemnego pozwolenia ze strony właściciela.

Декоративные краски и смолы Metropolis by Ivas являются экологически чистыми продуктами на водной основе, не содержащими растворителей. Вся продукция разрабатывается и производится в Италии на предприятии Ivas Spa, компании-лидера в области производства лакокрасочных материалов, имеющей сертификат UNI EN ISO 9001. Цветовые варианты, представленные в этом каталоге, являются фотографиями с оригинала и поэтому приводятся исключительно в наглядных целях. Продукция Metropolis by Ivas, представленная в этом каталоге, применяется на курсах Metropolis, которые проводятся в Academy - центре профессиональной подготовки Gruppo Ivas, имеющем сертификат UNI EN ISO 9001. Более подробную информацию о продукции, методах ее нанесения, применении для наружных работ, обучающих курсах и других аспектах можно получить на сайте www.metropolis-ivas.com или обратившись в отдел обслуживания клиентов компании Ivas Spa. Все содержание (текст, графическое оформление и изображения) этого документа защищено законом об авторских правах. Запрещено воспроизводить его без письменного разрешения владельца авторских прав.

Οι διακοσμητικές βαφές και ρητίνες Metropolis by Ivas είναι προϊόντα νερού, φιλικά προς το περιβάλλον, απαλλαγμένα από διαλύτες, όλα απολύτως επινοημένα και κατασκευασμένα στην Ιταλία, στην εγκατάσταση παραγωγής της Ivas Spa, ηγετικής επιχείρησης του τομέα βαφών και ρητίνων, με πιστοποίηση UNI EN ISO 9001. Οι χρωματικές παραλλαγές που παρουσιάζονται σε αυτό τον κατάλογο είναι φωτογραφικές αναπαράγωγές των αυθεντικών, κατ' επέκταση έχουν ενδεικτική σημασία. Τα προϊόντα Metropolis by Ivas που παρουσιάζονται σε αυτό τον κατάλογο είναι αντικείμενο των μαθημάτων Metropolis στο Academy, κέντρο επαγγελματικής κατάρτισης του Gruppo Ivas, με πιστοποίηση UNI EN ISO 9001. Για περισσότερες πληροφορίες σχετικά με τα προϊόντα, τις τεχνικές τοποθέτησης, τις εφαρμογές σε εξωτερικές επιφάνειες, τα μαθήματα κατάρτισης και άλλα, συμβουλευτείτε το web site www.metropolis-ivas.com ή επικοινωνήστε με την εξυπηρέτηση πελατών της Ivas Spa.

Όλα τα περιεχόμενα (κείμενο, γραφικά και εικόνες) που βρίσκονται εντός αυτού του εγγράφου είναι προστατευόμενα με το δικαίωμα πνευματικής ιδιοκτησίας και δεν μπορούν να αναπαράγονται χωρίς γραπτή εξουσιοδότηση από το δικαιούχο.

إن الطلاء والراتنجات للديكور من مجموعة منتجات Metropolis by Ivas هي منتجات من مصنوعة من أساس مائي، صديقة للبيئة ومتوائمة معها، خالية من المذيبات، وجميعها مصممة ومصنوعة في إيطاليا وفقاً لقواعد صارمة، في المنشأة الإنتاجية للشركة المساهمة Ivas Spa، الشركة الرائدة في عالم الدهانات والطلاء والحاصلة على شهادة UNI EN ISO 9001. والتنوعات اللونية المقدمة في هذا الكatalog هي صور مطبوعة عن الأصل ولهذا فإن لها قيمة إرشادية. مجموعة المنتجات Metropolis المقدمة في هذا الكatalog هي موضوع دورات Metropolis في مركز ماستر جي Academy وهو مركز التدريب المهني لـ Gruppo Ivas الحاصلة على شهادة UNI EN ISO 9001. للحصول على مزيد من المعلومات حول المنتجات وتقنيات التثبيت وكيفية تطبيق المنتجات في الخارج ودورات التدريب وغيرها من معلومات أطلعوا على الموقع الإلكتروني www.metropolis-ivas.com أو اتصلوا بخدمة العملاء لشركة Ivas Spa. كافة المحتويات (النص والرسومات والصور) الموجودة داخل هذه الوثيقة محمية بموجب حقوق النشر وغير قابلة للنسخ إلا بإذن كتابي من الم

Metropolis by Ivas装饰涂料和树脂都是水性产品，环保且不含溶剂，所有产品都在意大利境内Ivas Spa股份公司的工厂内严格设计和制造，本公司是涂料和漆料行业内的领先企业，拥有UNI EN ISO 9001认证。在本目录中介绍的色彩系列为原产品的实拍照片，因此仅供参考。在本目录中介绍的Metropolis by Ivas产品均为Gruppo Ivas集团旗下职业培训中心Academy的Metropolis课程的教学主题，中心拥有UNI EN ISO 9001认证。如要获取更多有关产品的信息，包括安装技术、室外应用、培训课程及其他，请浏览网站 www.metropolis-ivas.com 或联系Ivas Spa股份公司的客服。

本目录中含有的所有内容（文字、设计图和图片）均受作者版权保护，除非获得书面授权不得进行任何复制。



Metropolis by Ivas



Metropolis Ivas



metropolis_ivas

METROPOLIS[®]
MADE IN ITALY

www.metropolis-ivas.com

IVAS industria vernici s.p.a. - via Bellaria, 40 - 47030 San Mauro Pascoli (FC) Italy
phone +39 0541 815811 - fax +39 0541 815815

Company with quality
management system
certified UNI EN ISO 9001

Ediz. 07-2024