



Components Catalogue

ENG - 2023

ALIVA, MADE IN ITALY RAINSCREEN SYSTEMS

Rainscreen systems and ventilated facades, from design to construction

We develop customised solutions for rainscreen systems or ventilated facades in response to specific requests and problems, by engineering and implementing all kinds of architectural ideas in the field of building envelope design.

A strong commitment to the “tailored” approach is combined with a vast catalogue of original solutions, tried and tested in over thirty years of direct on-site experience: a know-how employed in the service of “made-to-measure” design, for finely tailored solutions to clothe the most daring of projects.

To ensure the quality of our services and consultancy for rainscreen systems and the appropriate level of technical and design assistance during the installation phase anywhere in the world, we work closely with our local companies and with dealers of proven reliability.

Our mission is to allow the designer to realise his vision of a building envelope, with no limitations on his choice of material, technology or aesthetics for rainscreen systems or ventilated facades, adopting a highly tailored approach that includes both “prêt-à-porter” solutions which can be applied to the project easily and quickly, and fully “tailored” solutions, to create a unique, exclusive and highly fashionable “look”.

SYSTEMS

MATERIALS AND SURFACES FOR ARCHITECTURE

ALU.COVERING	pag. 6
TERRA.COVERING	pag. 7
MESH.COVERING	pag. 8
CERAMIC.COVERING	pag. 9
CONCRETE.COVERING	pag. 10
LARGE.COVERING	pag. 11

SYSTEMS AND COMPONENTS

PORCELAIN TILE

Visible systems

ALI KL	pag. 13
ALI M	pag. 14
ALI Q	pag. 15

Concealed systems

ALI S	pag. 16
-------------	---------

NATURAL STONE

Concealed systems

ALI STONE 2	pag. 17
ALI STONE 3	pag. 18

HPL - FIBER C

Concealed systems

ALI HPLS - ALI FIBROS	pag. 19
-----------------------------	---------

GLASS

Concealed systems

ALI GLASS S	pag. 20
-------------------	---------

MATERIALS AND SURFACE FOR ARCHITECTURE

“Materials and surfaces for architecture” is the collection by Aliva that is the result of extensive research into the aesthetics of the materials used for facades and their potential for expression. By developing substructures and fastening systems, Aliva offers complete, unique, and original solutions of great creativity and architectural inspiration, in response to specific landscape requirements.

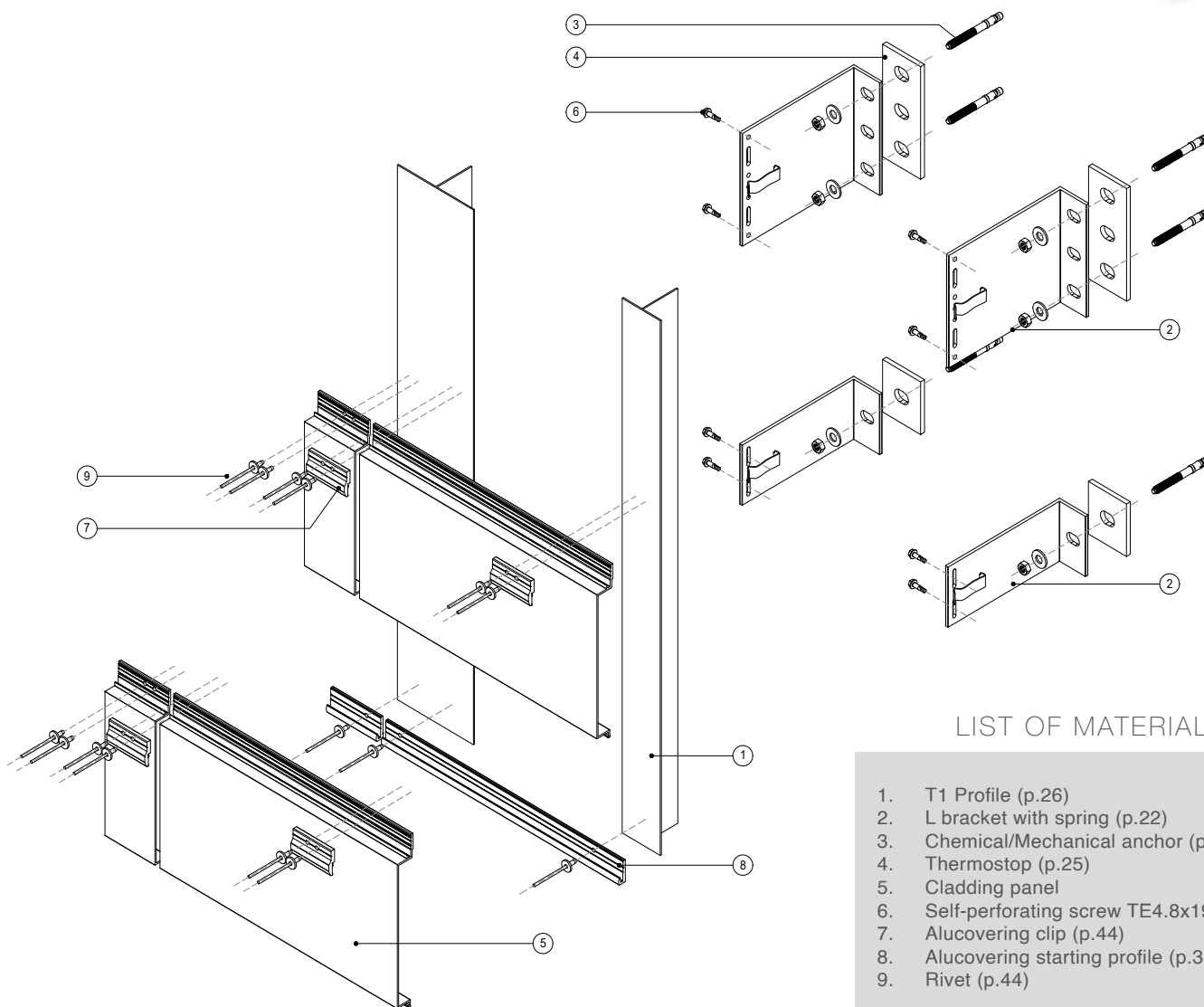
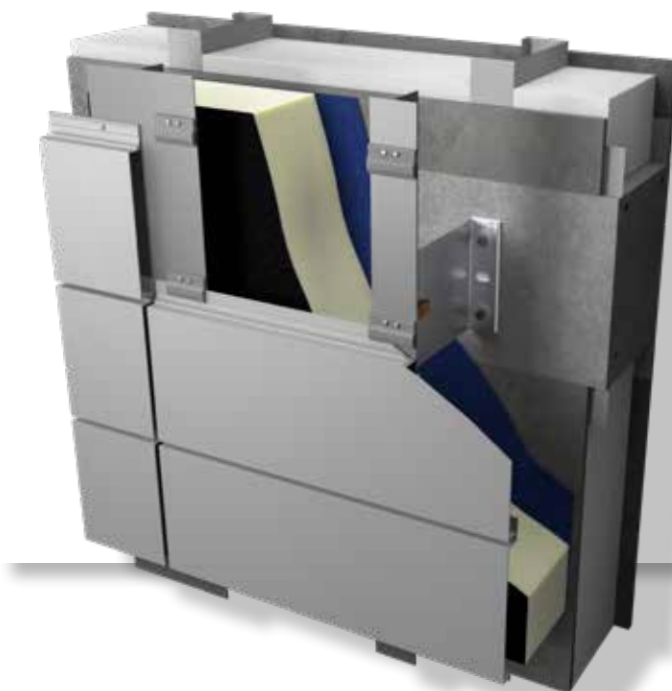


“Materials and Surfaces for Architecture” is the transfer to the facade of evocative impressions and memories that have been projected into visions of the future. The materials are defined and catalogued according to their characteristics and performance, in order to find solutions to specific technical project requirements.



ALU.COVERING is light, durable, resistant to corrosion and the passage of time. Aluminium is a ductile and malleable material that lends itself to endless creativity in metallescent facade architecture.

Do you want to know more about cladding panels? Discover all the models and finishes available on www.aliva.it



LIST OF MATERIALS

1. T1 Profile (p.26)
2. L bracket with spring (p.22)
3. Chemical/Mechanical anchor (p.52-53)
4. Thermostop (p.25)
5. Cladding panel
6. Self-perforating screw TE4.8x19 (p.22)
7. Alucovering clip (p.44)
8. Alucovering starting profile (p.36)
9. Rivet (p.44)

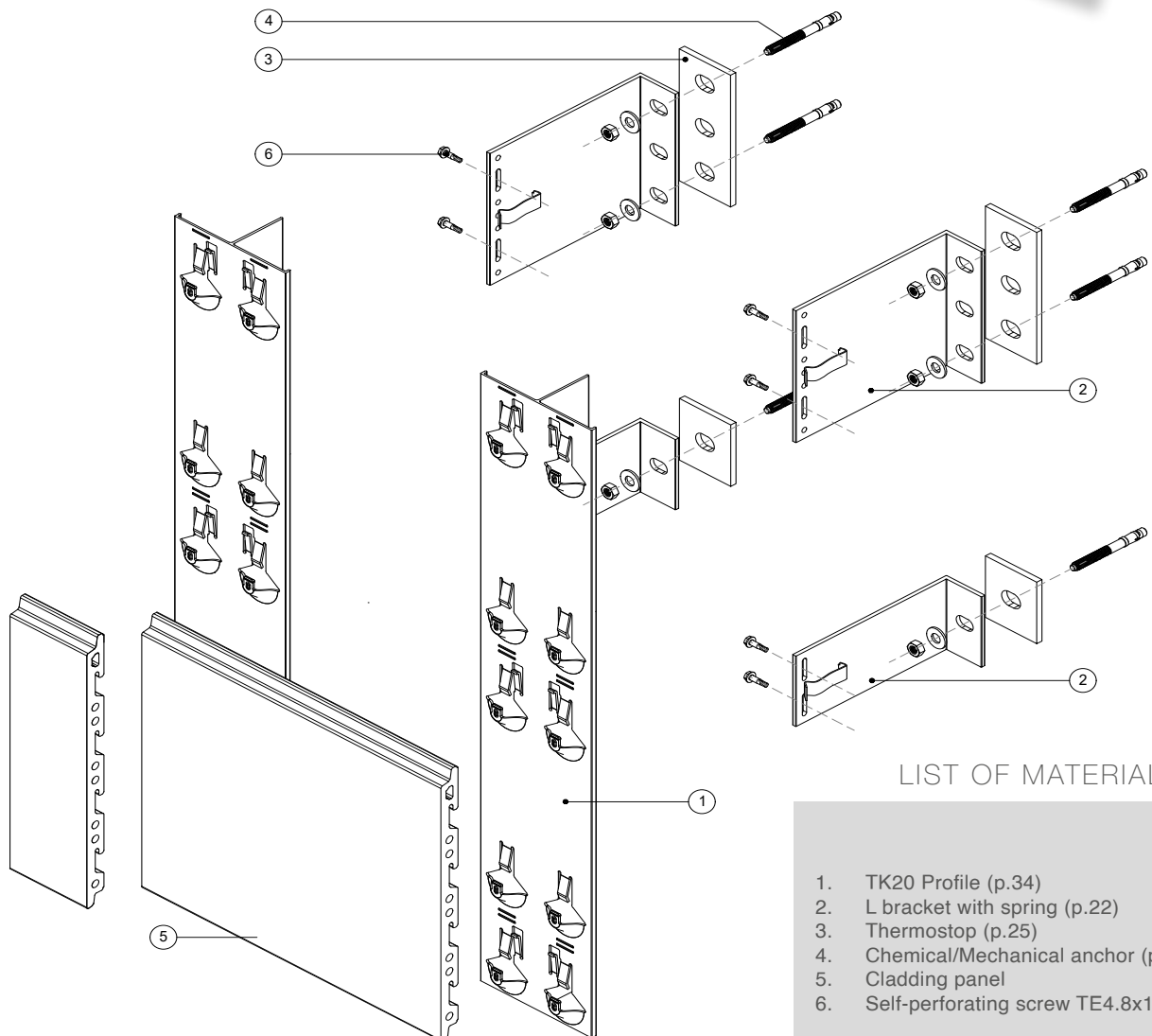
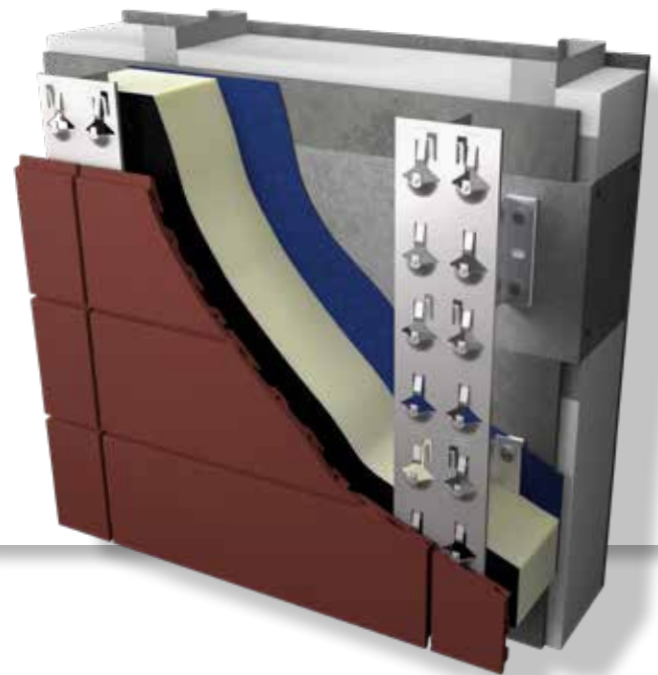
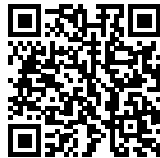
Terra.covering



TERRA.COVERING is the Aliva rainscreen system for the terracotta cladding. The system, made of aluminium alloy, is made up of L-shaped brackets, vertical T-shaped risers which are designed to accommodate the slabs.

The cladding panels have a surface characterised by an innovative self-cleaning nanotechnology, Hydrophilic Tile (HT), capable of reducing the amount of pollutants in the air.

Do you want to know more about cladding panels? Discover all the models and finishes available on www.aliva.it

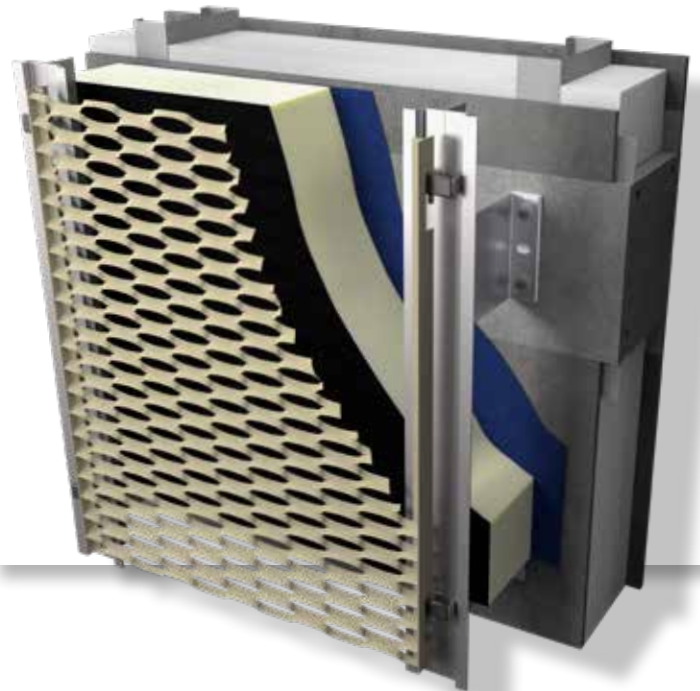


LIST OF MATERIALS

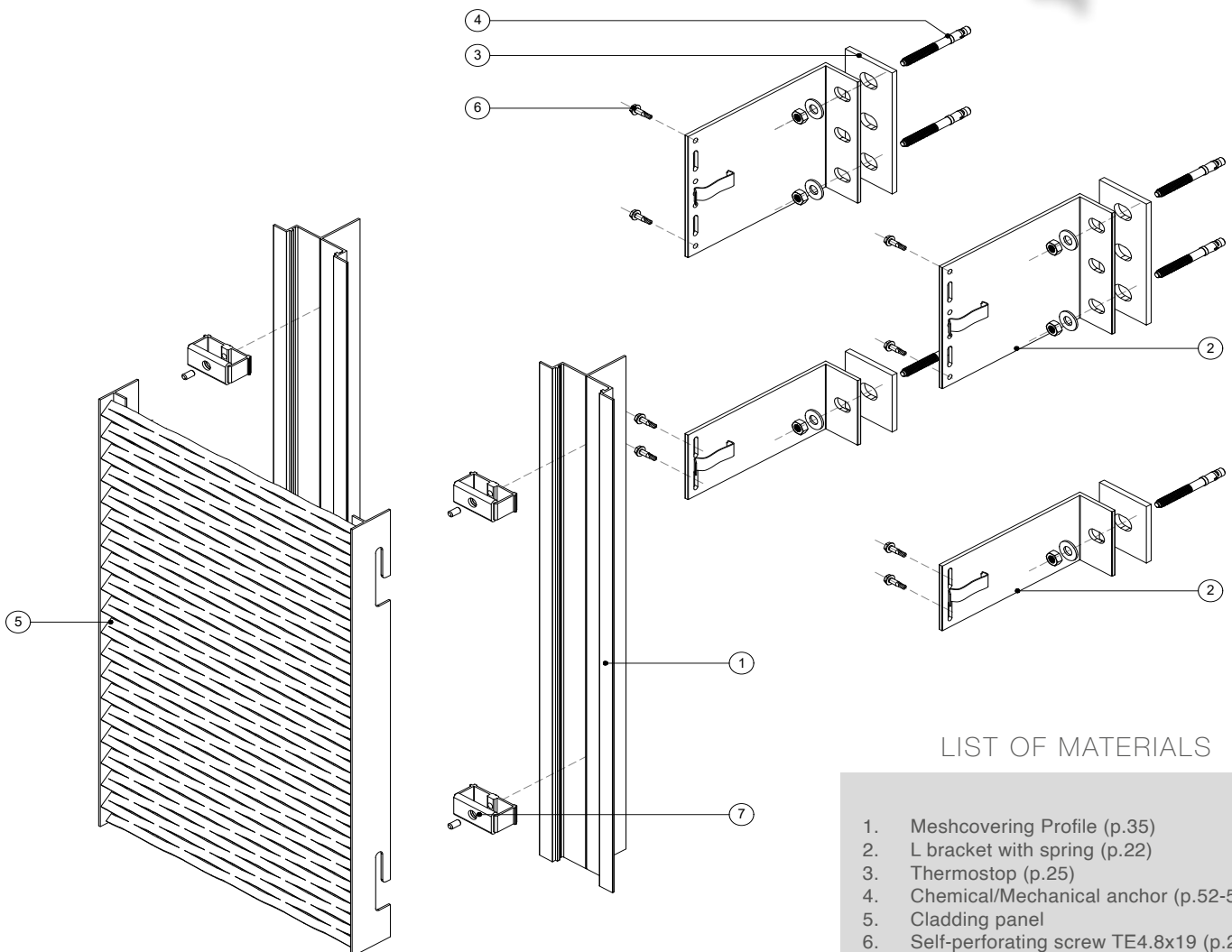
1. TK20 Profile (p.34)
2. L bracket with spring (p.22)
3. Thermostop (p.25)
4. Chemical/Mechanical anchor (p.52-53)
5. Cladding panel
6. Self-perforating screw TE4.8x19 (p.22)

Mesh.covering

MESH.COVERING is a proposal for a change towards new creative horizons. The aluminium alloy substructure system is made up of extruded brackets and risers and specially designed accessories that allow the cladding elements to be fastened by means of clips in all conditions and to be remove each individual panel, whether with vertical, horizontal or mixed modulation.



Do you want to know more about cladding panels? Discover all the models and finishes available on www.aliva.it



LIST OF MATERIALS

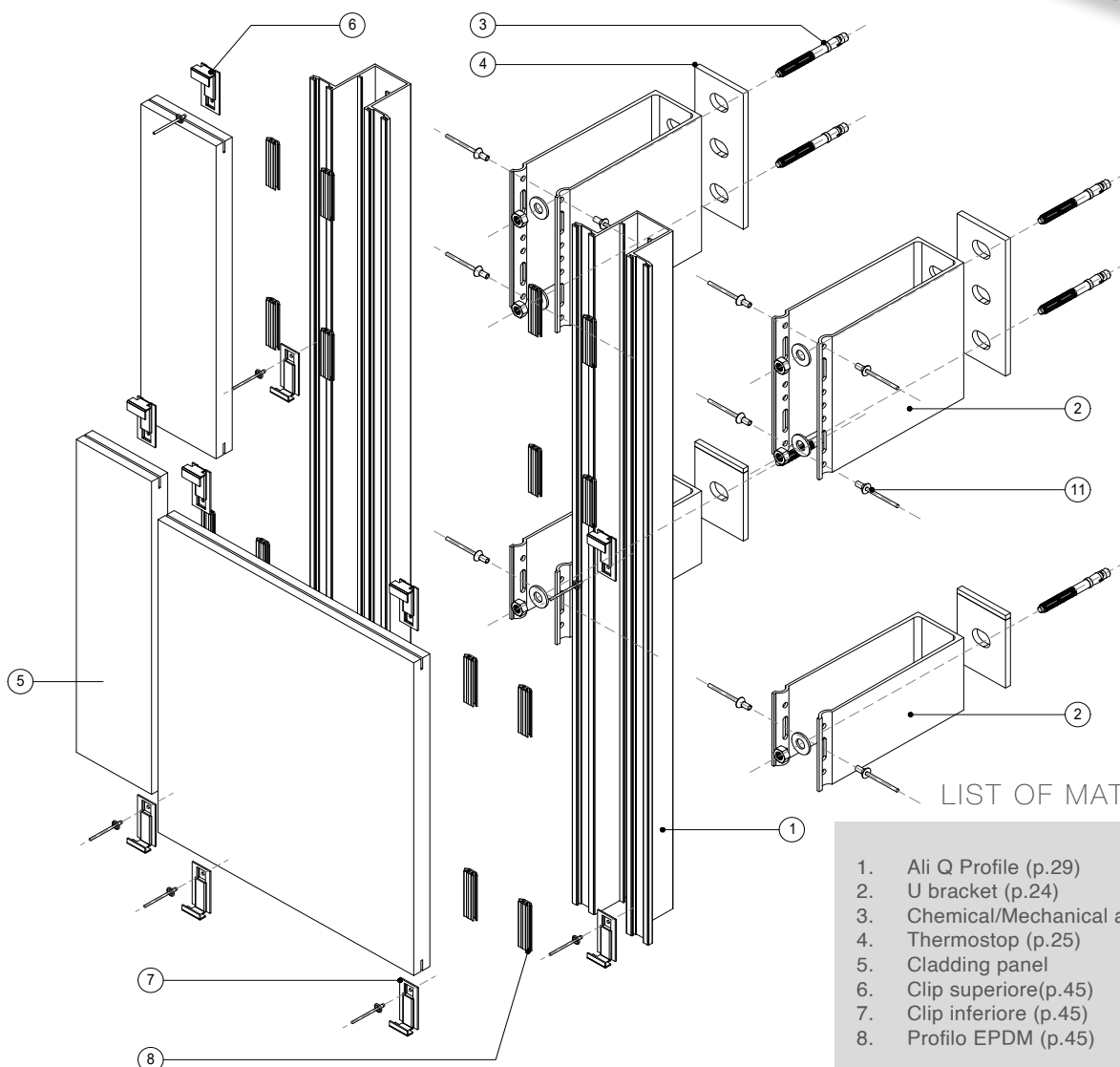
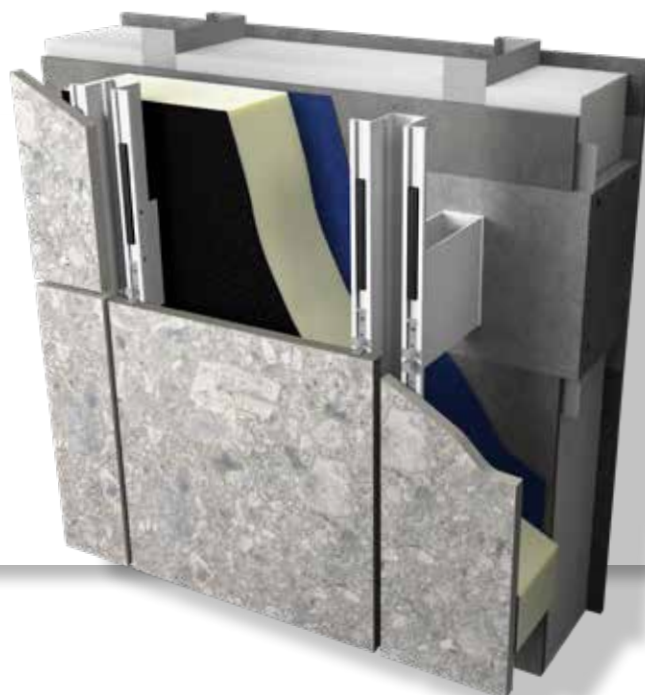
1. Meshcovering Profile (p.35)
2. L bracket with spring (p.22)
3. Thermostop (p.25)
4. Chemical/Mechanical anchor (p.52-53)
5. Cladding panel
6. Self-perforating screw TE4.8x19 (p.22)
7. Fastening with antivibration (p.46)

Ceramic.covering



CERAMIC.COVERING defines new inspirations, with the infinite textures, finishes and combinations that porcelain stoneware offers. The aluminium alloy substructure system is made up of extruded brackets and risers of suitable section in which are housed clips for the concealed fasteners of slabs.

Do you want to know more about cladding panels? Discover all the models and finishes available on www.aliva.it

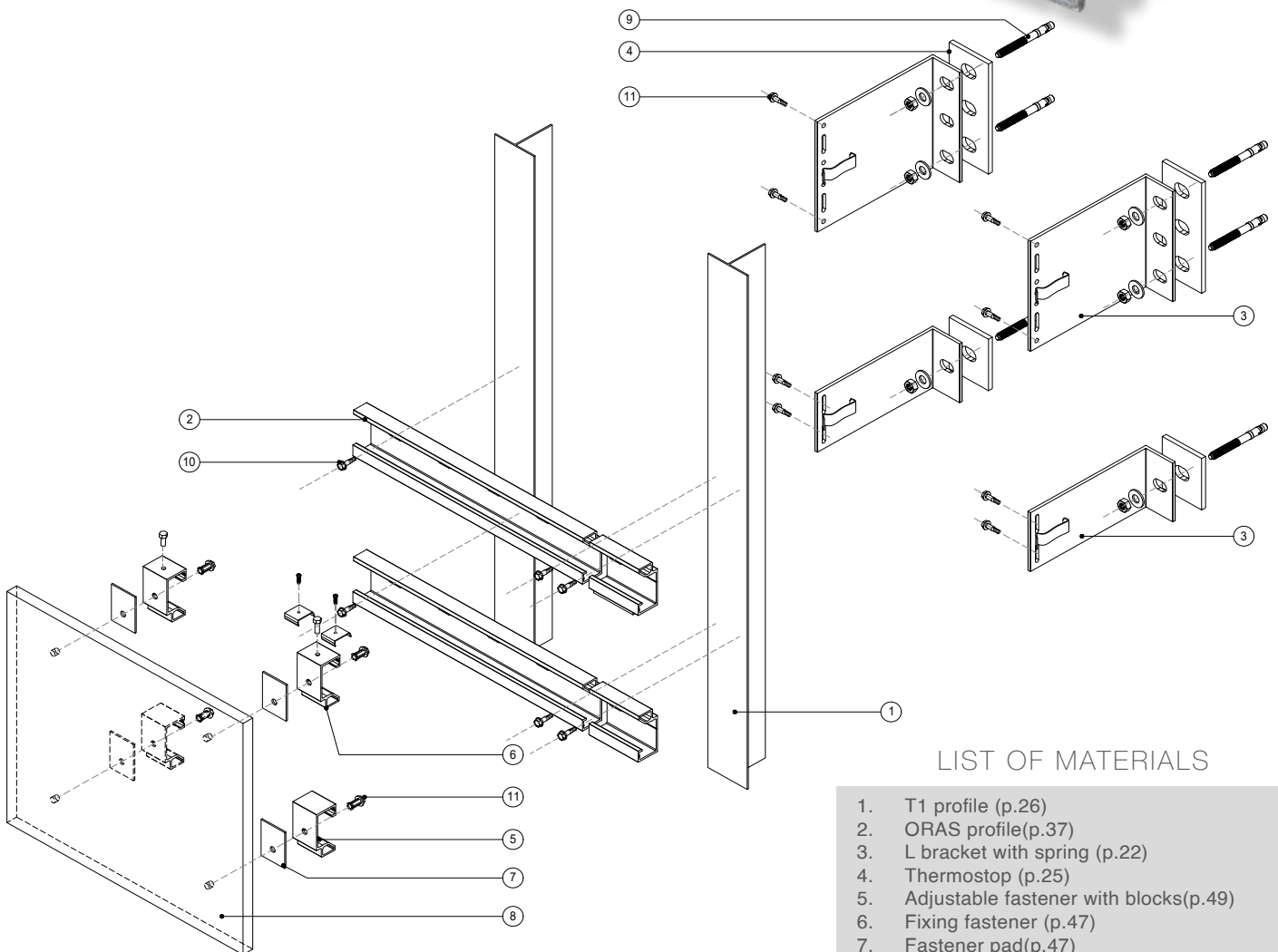
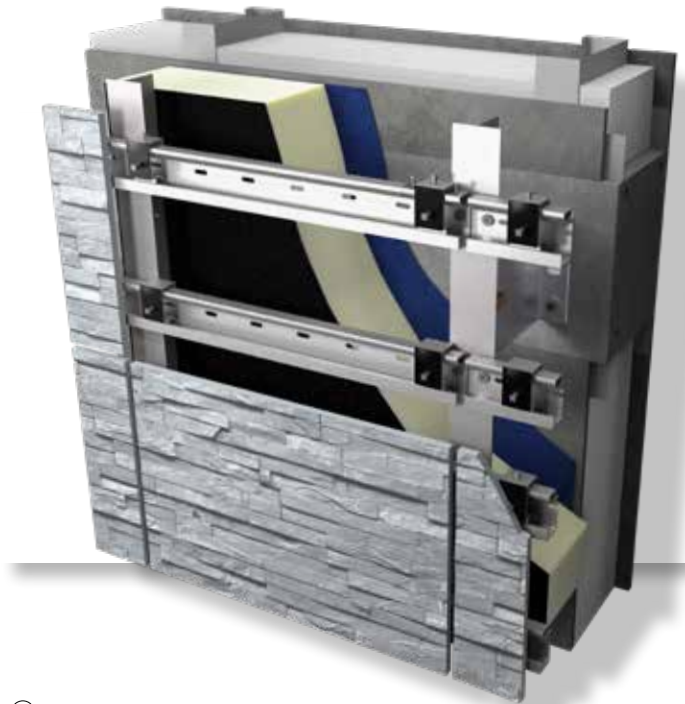


LIST OF MATERIALS

1. Ali Q Profile (p.29)
2. U bracket (p.24)
3. Chemical/Mechanical anchor (p.52-53)
4. Thermostop (p.25)
5. Cladding panel
6. Clip superiore (p.45)
7. Clip inferiore (p.45)
8. Profilo EPDM (p.45)

CONCRETE.COVERING enhances any facade project with its modern aesthetics with a strong essential character. The concealed fastening system is achieved by making suitable undercut holes in the panel, which are designed at the production stage to accommodate Keil-type expansion anchors.

Do you want to know more about cladding panels? Discover all the models and finishes available on www.aliva.it



LIST OF MATERIALS

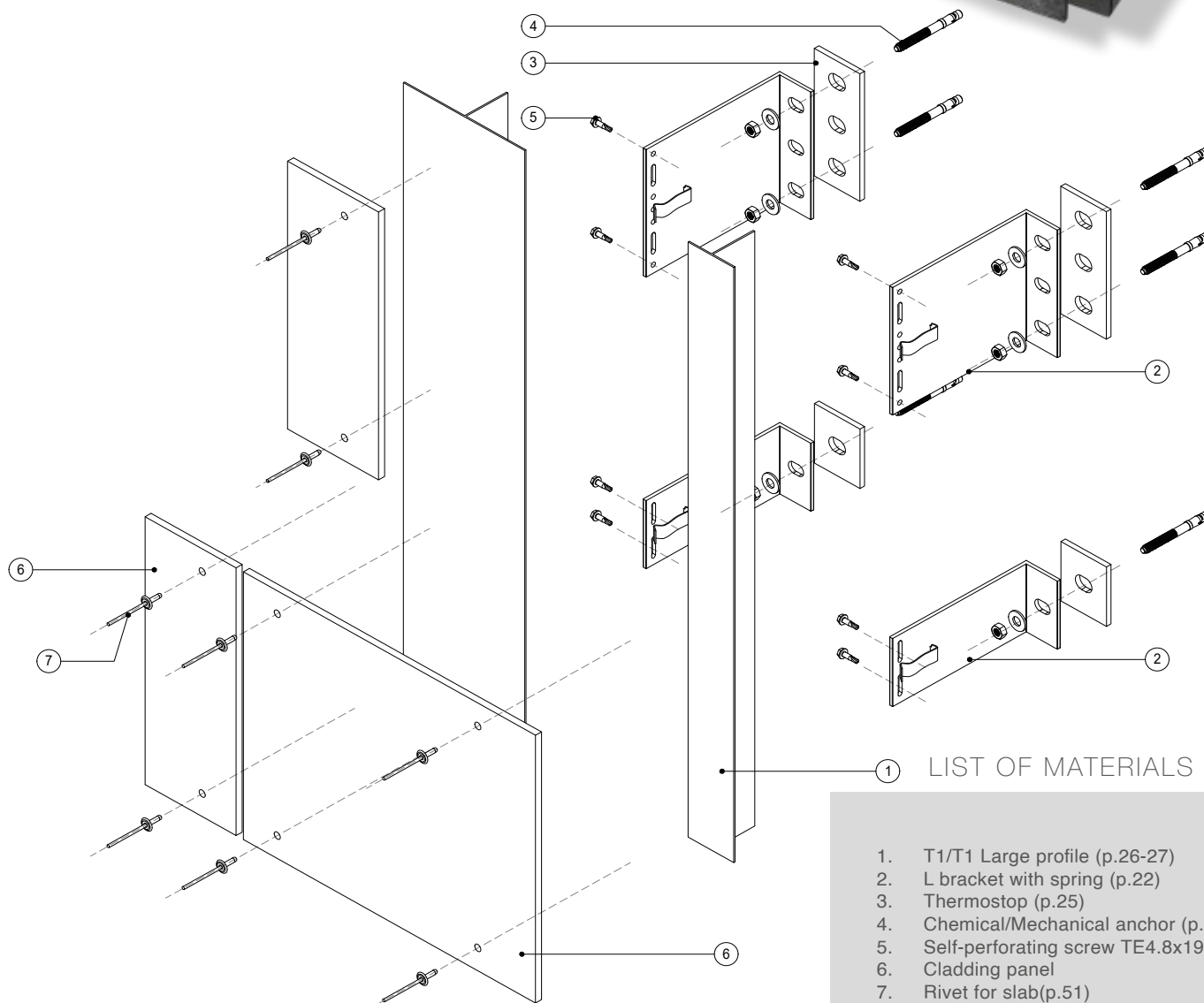
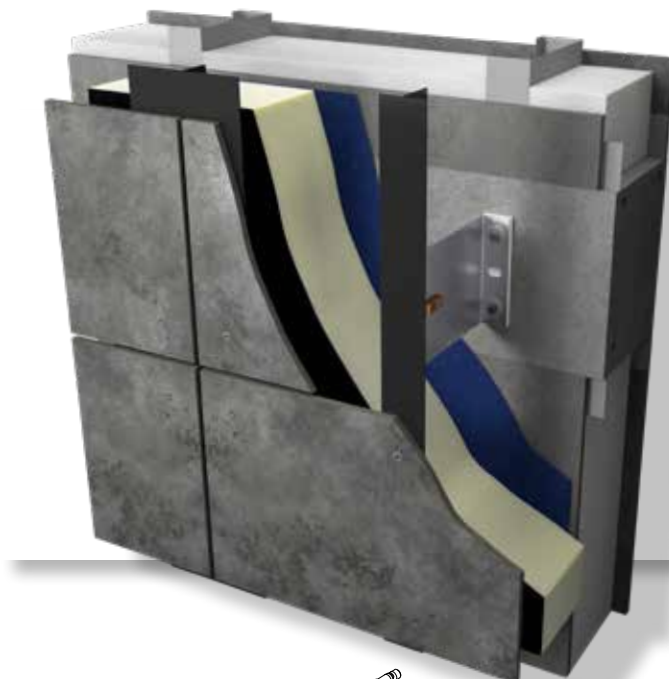
1. T1 profile (p.26)
2. ORAS profile(p.37)
3. L bracket with spring (p.22)
4. Thermostop (p.25)
5. Adjustable fastener with blocks(p.49)
6. Fixing fastener (p.47)
7. Fastener pad(p.47)
8. Cladding panel
9. Chemical/Mechanical anchor (p.52-53)
10. Self-perforating screw TE4.8x19 (p.22)
11. Anchor for slab (p.47)

Large .covering



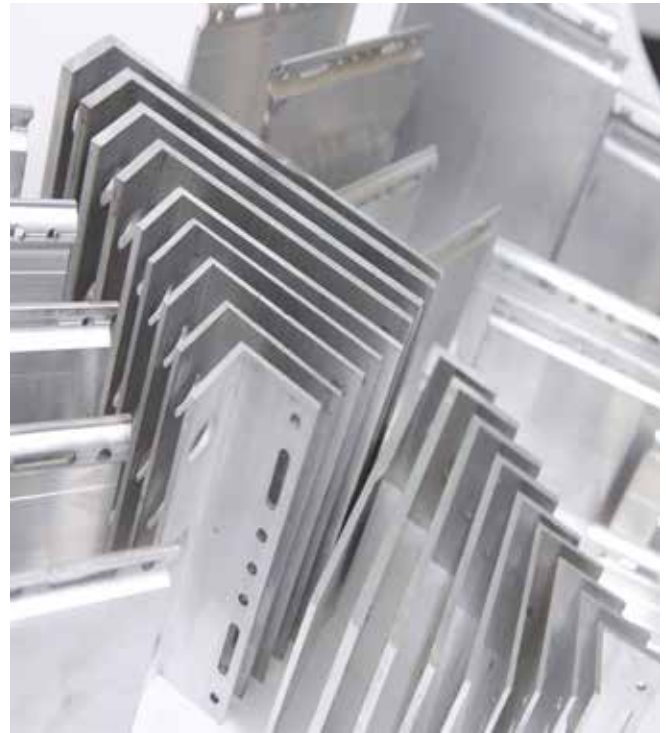
LARGE.COVERING is a collection of large-format continuous surfaces characterised by lightness, reduced thickness, maximum resistance, durability, and ease of installation, redefining the scenographic space for a new design experience. The aluminium alloy substructure system is made up of extruded brackets and risers of suitable section. The visible fastening system is achieved by screw or thermo-lacquered rivet fasteners in matching or contrasting colours.

Do you want to know more about cladding panels? Discover all the models and finishes available on www.aliva.it



SYSTEMS AND COMPONENTS

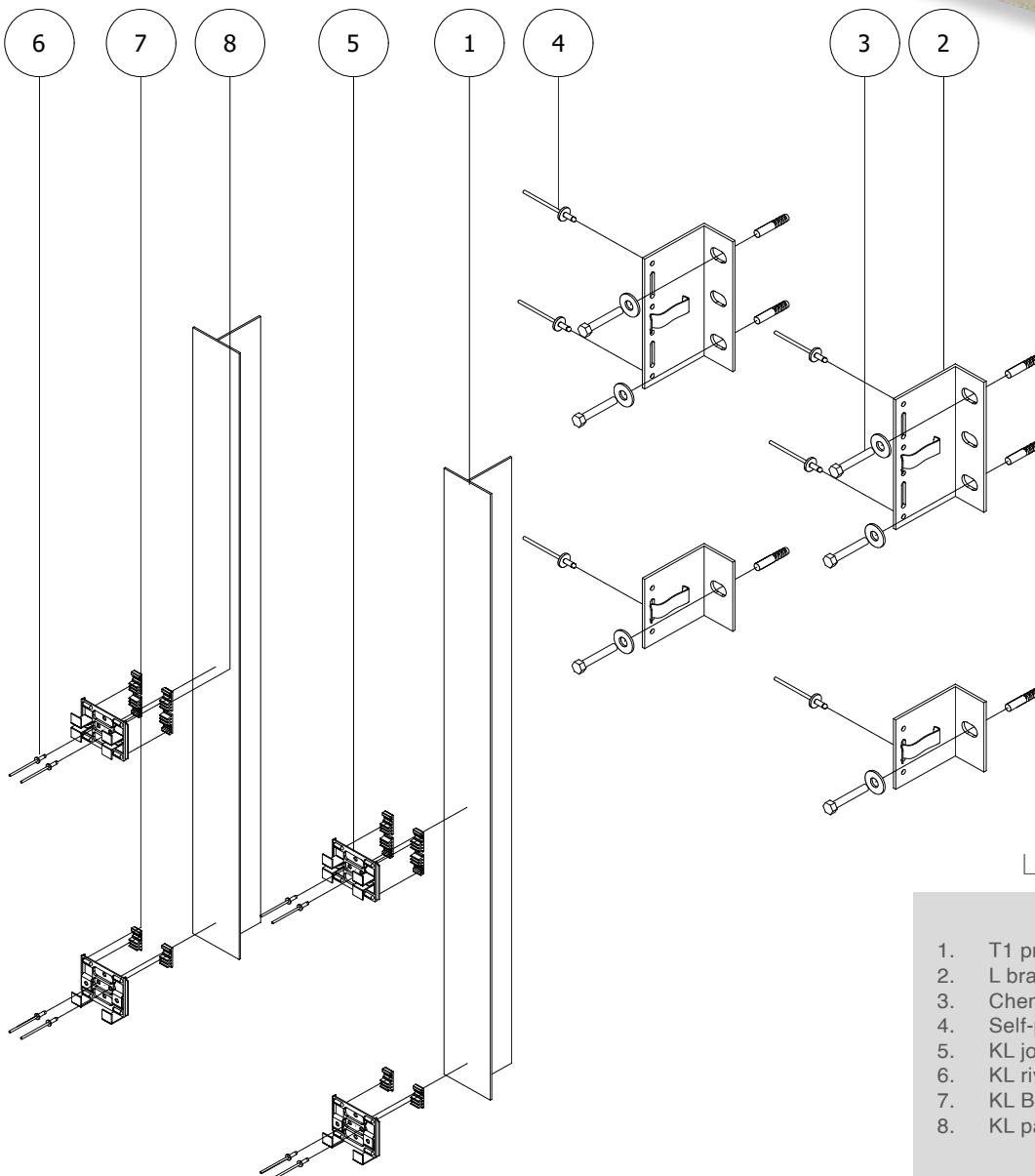
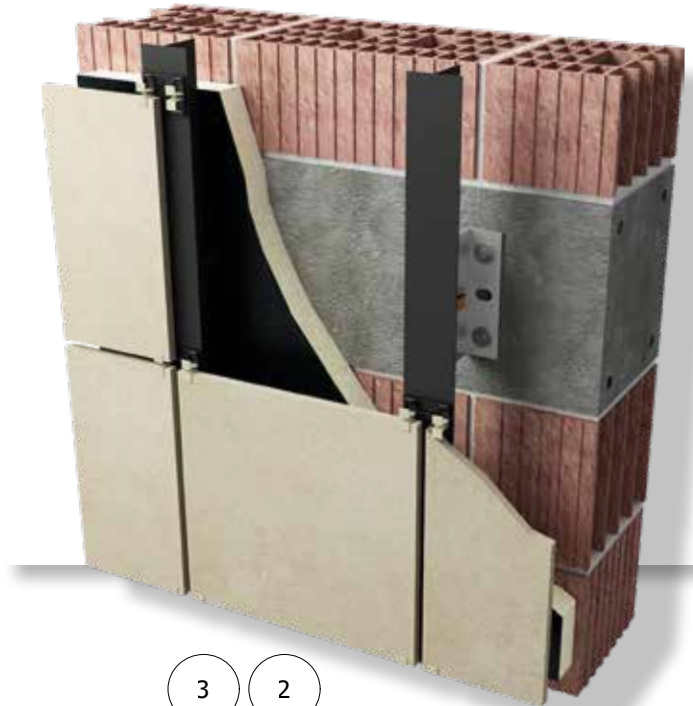
Aliva, in addition to the “Pret-a-Porter” collections previously presented, completes the range with a selection of standard and customized products to satisfy any architectural request; offering types of materials for ventilated façades such as porcelain stoneware, glass, natural stone, perforated sheets, metal meshes and large format panel.



The wide range of products offered allows great compositional freedom in the façade, not only in terms of cladding, but also of substructure systems, fastening (visible or concealed) and individual components. The excellence of the façade comes from the study of the details and the integrated set of the relevant elements, from the deep knowledge of the materials and their behaviour under operating conditions on the wall deriving from Aliva’s long design experience.

Following a selection of proposals and specialized solutions for rainscreen systems with EN AW-6063 T6/T66 (AlMgSi) aluminium alloy substructure system, made up of extruded brackets and risers of suitable section, connected by means of AISI 304 and 316 stainless steel fittings and technologies that allow fastening in all conditions and free thermal expansion of all components.

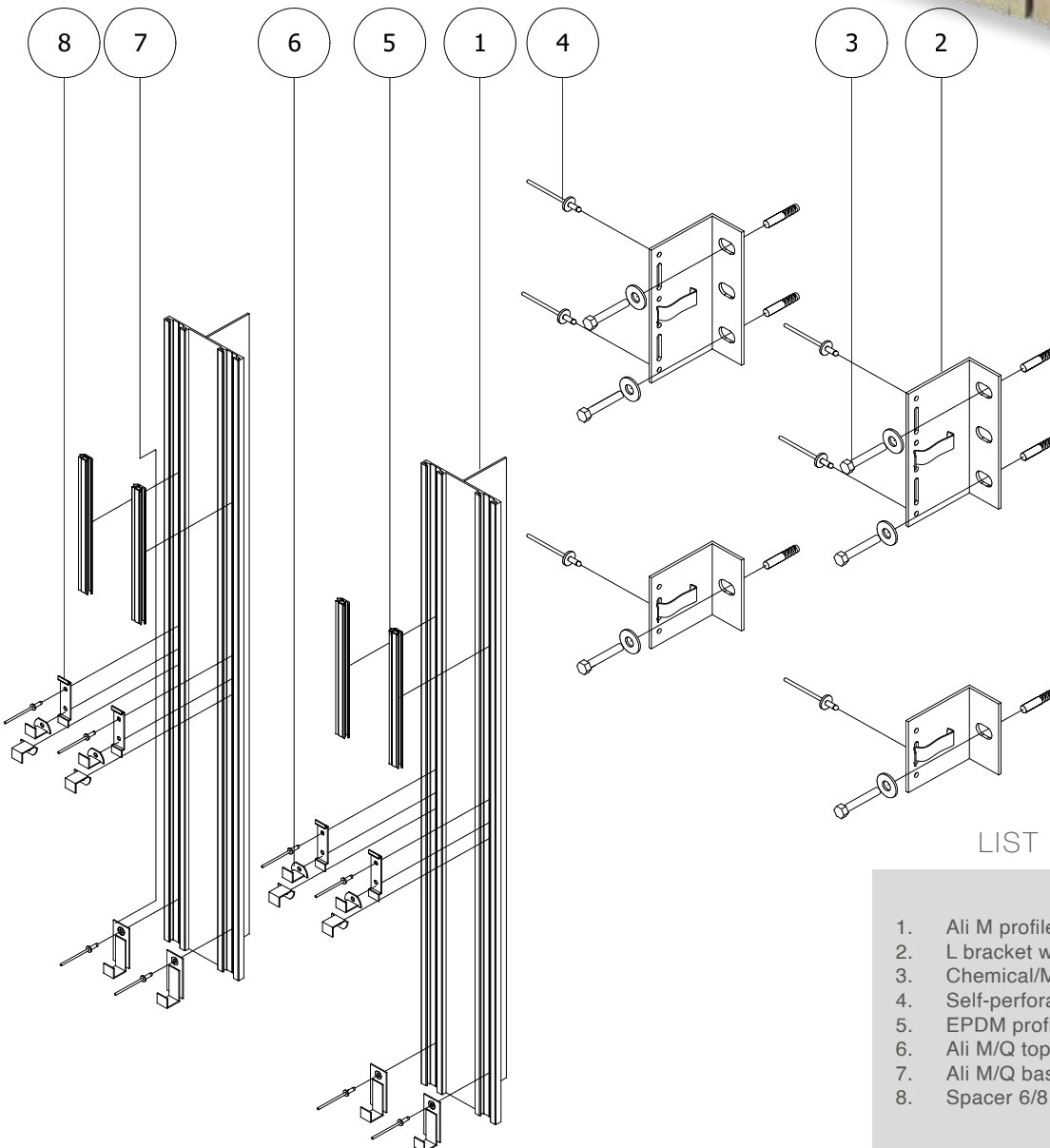
Ali KL is an Aliva substructure system for porcelain tiles cladding. The system, in aluminium alloy, is composed of brackets and vertical mullions, onto which are mounted steel plates with coloured clips for the fixing of tiles or panels, with 8 mm joints. The entire system can be customised by having the aluminium components coated and the attachment clips coloured to match the colour of the tiles.



LIST OF MATERIALS

1. T1 profile (p. 26)
2. L bracket with spring (p. 22)
3. Chemical/Mechanical anchor (p.52-53)
4. Self-perforating screw TE4.8x19 (p.22)
5. KL joint clip (p.42)
6. KL rivet (p.42)
7. KL Base clip (p.42)
8. KL pad (p.42)

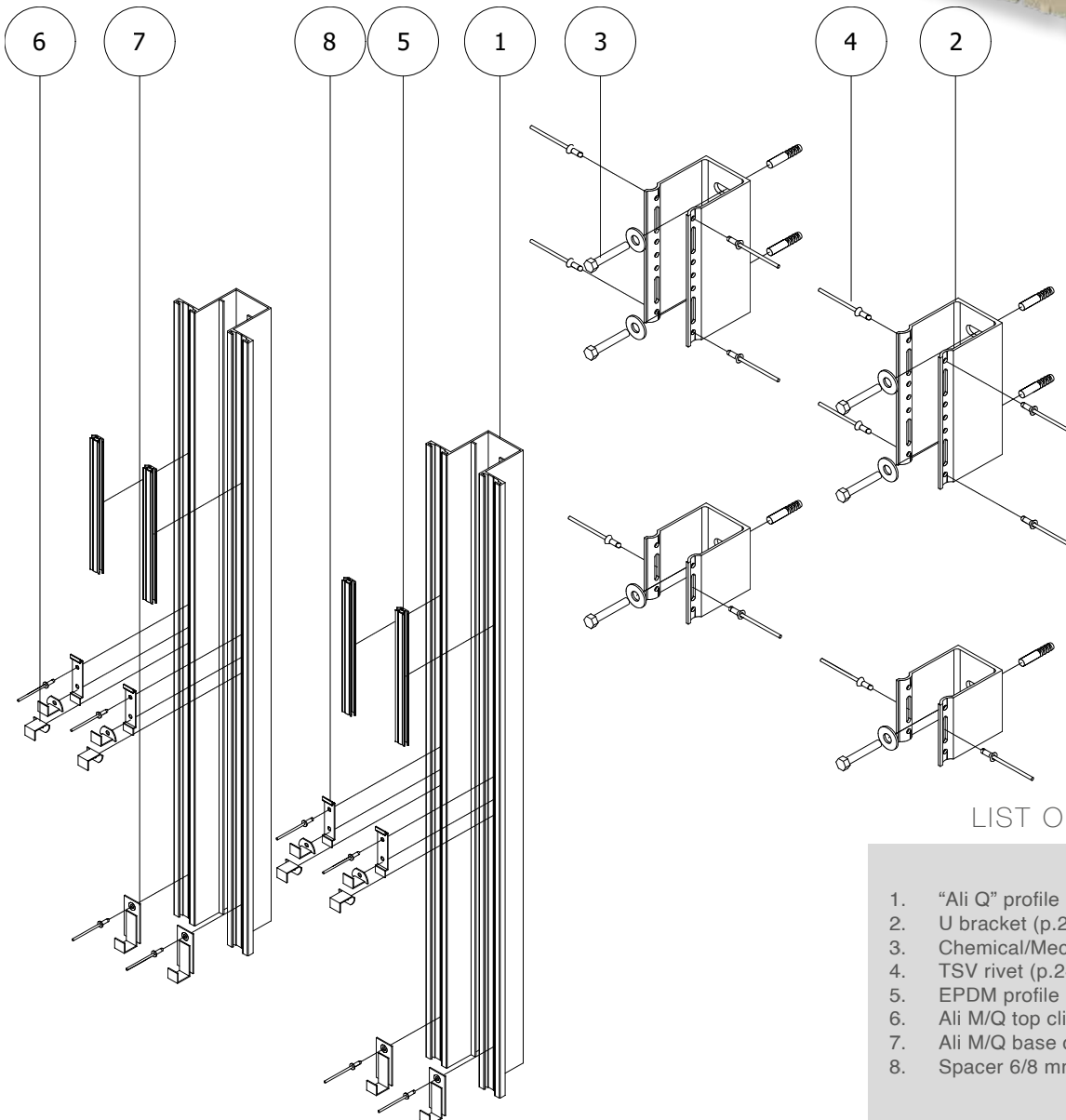
Ali M is an Aliva substructure system for porcelain tiles cladding. The system, in aluminium alloy, is composed of brackets and vertical mullions, with slots into which stainless steel clips, coloured to match the tiles, are inserted for securing the tiles or panels, with joints of 6 or 8 mm.



LIST OF MATERIALS

1. Ali M profile (p.28)
2. L bracket with spring (p.22)
3. Chemical/Mechanical anchor (p.52-53)
4. Self-perforating screw TE4.8x19 (p.22)
5. EPDM profile (p.43)
6. Ali M/Q top clip (p.43)
7. Ali M/Q base clip (p.43)
8. Spacer 6/8 mm (p.43)

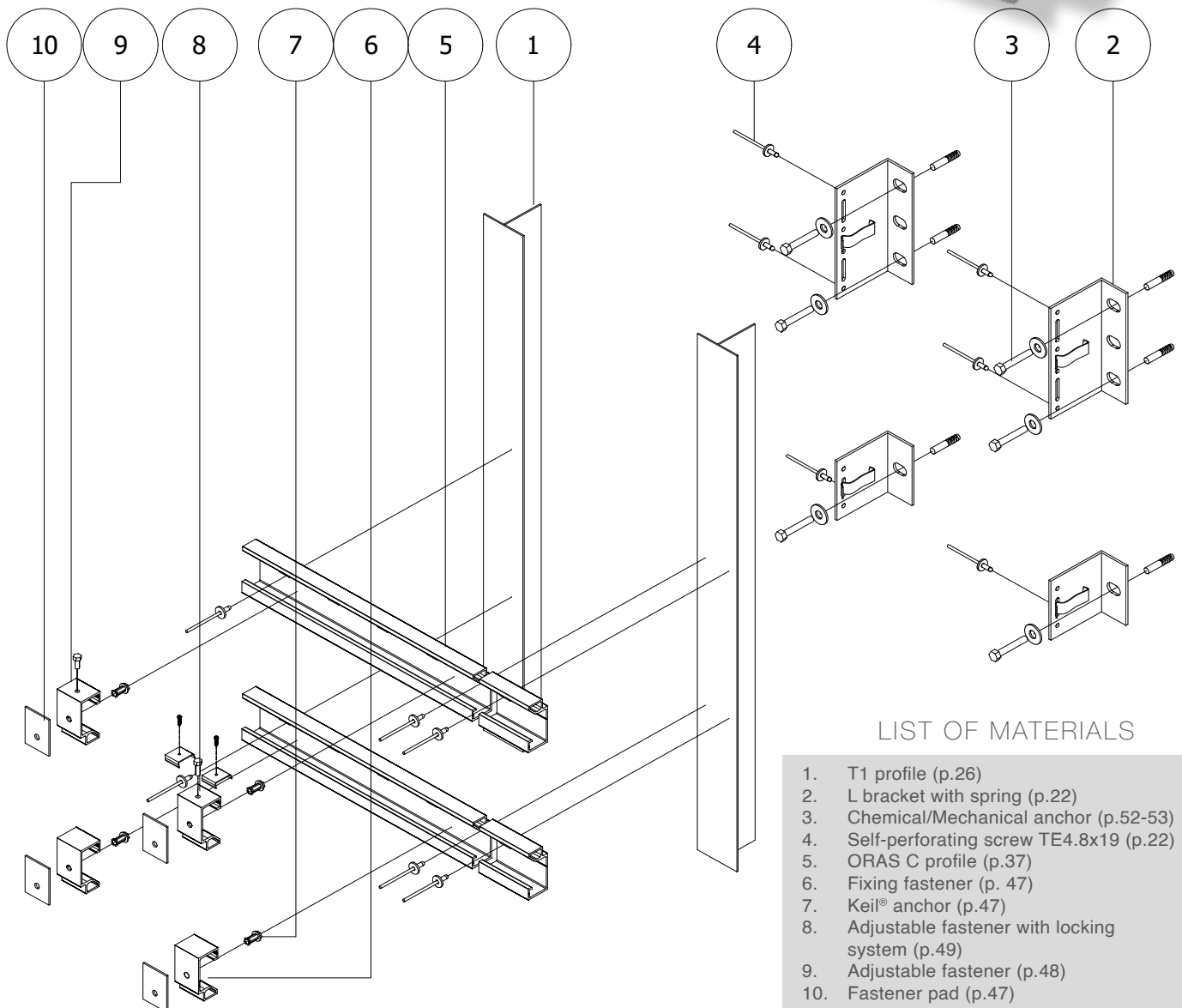
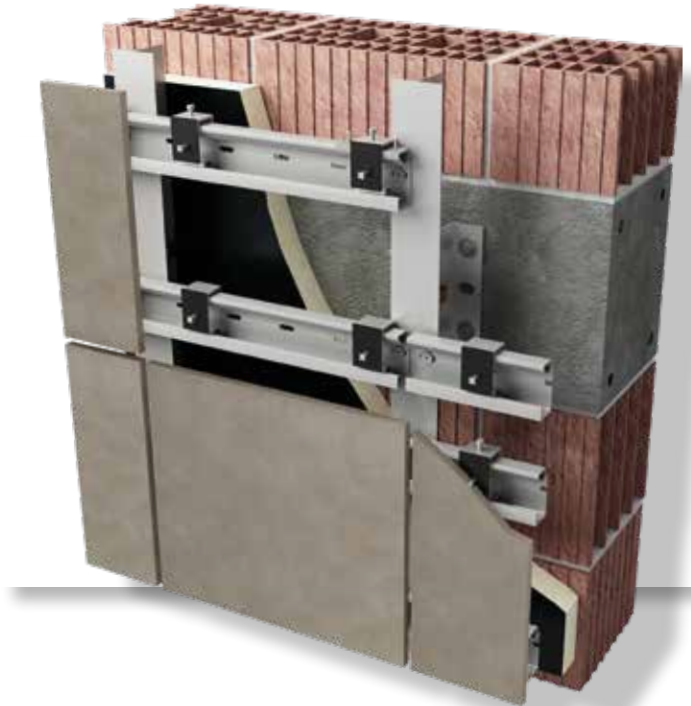
Ali Q is an Aliva substructure system for porcelain tiles cladding. The system, in aluminium alloy, consists of U brackets and omega section vertical mullions, with high structural strength. The vertical mullions have slots into which stainless steel clips, coloured to match the tiles, are inserted for securing the tiles or panels, with joints of 6 or 8 mm.



LIST OF MATERIALS

1. "Ali Q" profile (p.29)
2. U bracket (p.24)
3. Chemical/Mechanical anchor (p.52-53)
4. TSV rivet (p.24)
5. EPDM profile (p.43)
6. Ali M/Q top clip (p.43)
7. Ali M/Q base clip (p.43)
8. Spacer 6/8 mm (p.43)

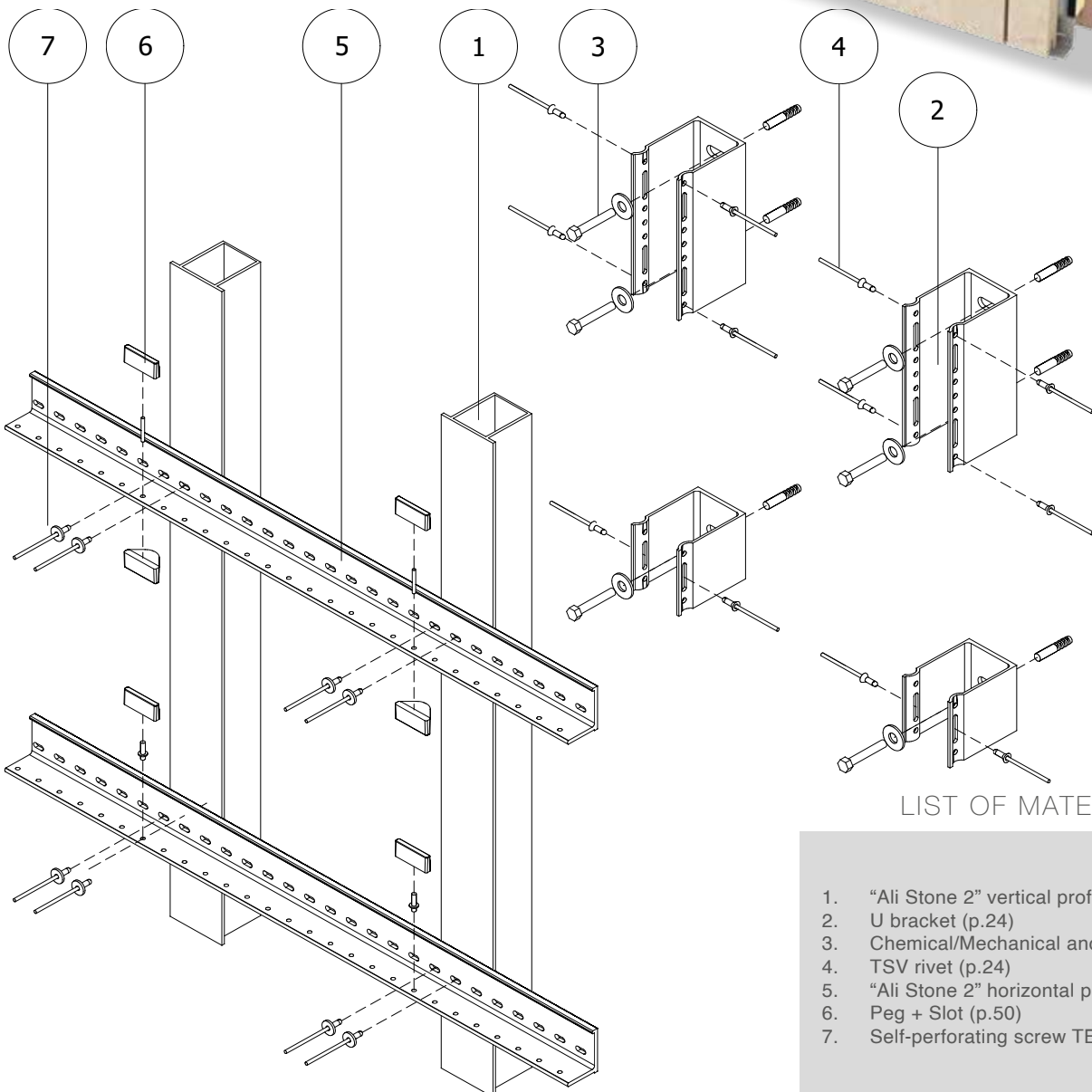
Ali S is an Aliva substructure system for porcelain tiles cladding. The system, made of aluminium alloy, is composed of L-shaped brackets, T section vertical mullions and horizontal profiles to which the tiles are secured by means of fasteners fixed out of sight on the back of the same.



LIST OF MATERIALS

1. T1 profile (p.26)
2. L bracket with spring (p.22)
3. Chemical/Mechanical anchor (p.52-53)
4. Self-perforating screw TE4.8x19 (p.22)
5. ORAS C profile (p.37)
6. Fixing fastener (p. 47)
7. Keil® anchor (p.47)
8. Adjustable fastener with locking system (p.49)
9. Adjustable fastener (p.48)
10. Fastener pad (p.47)

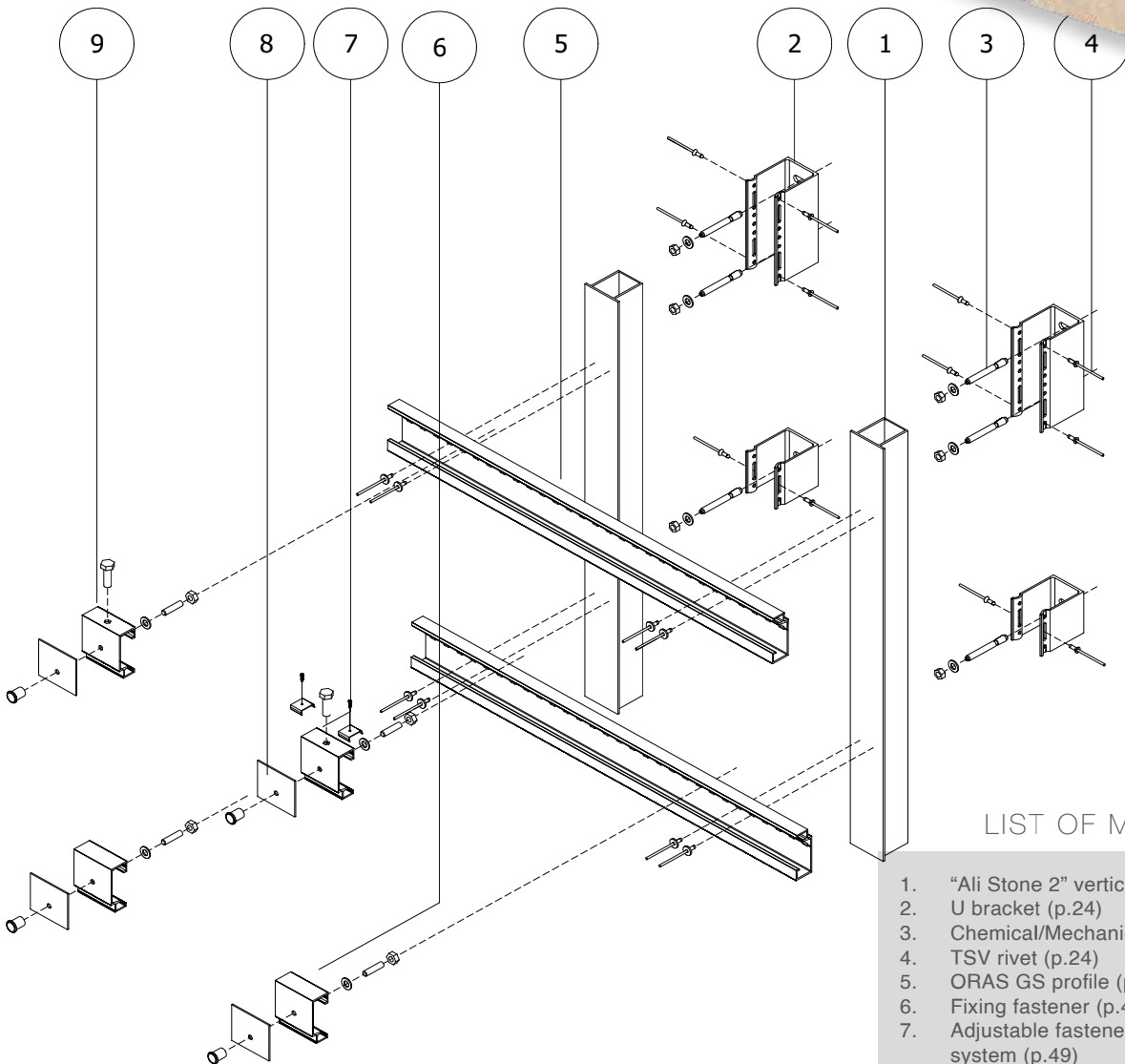
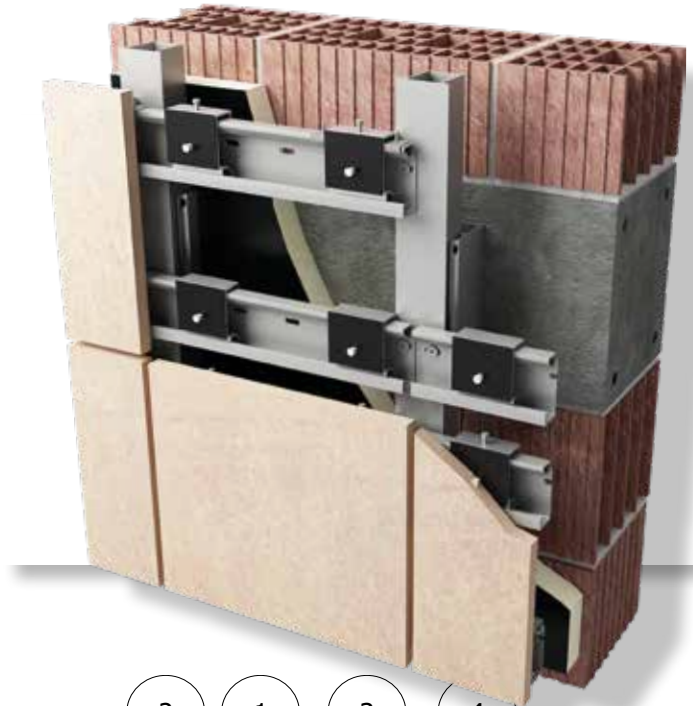
Ali Stone 2 is an Aliva substructure system for natural stone cladding. The system, in aluminium alloy, consists of U brackets, vertical mullions and horizontal profiles, which support the slabs of natural stone, secured by means of pegs of stainless steel and nylon dowels.



LIST OF MATERIALS

1. "Ali Stone 2" vertical profile (p.32)
2. U bracket (p.24)
3. Chemical/Mechanical anchor (pag.52-53)
4. TSV rivet (p.24)
5. "Ali Stone 2" horizontal profile (p.39)
6. Peg + Slot (p.50)
7. Self-perforating screw TE4.8x19 (p.22)

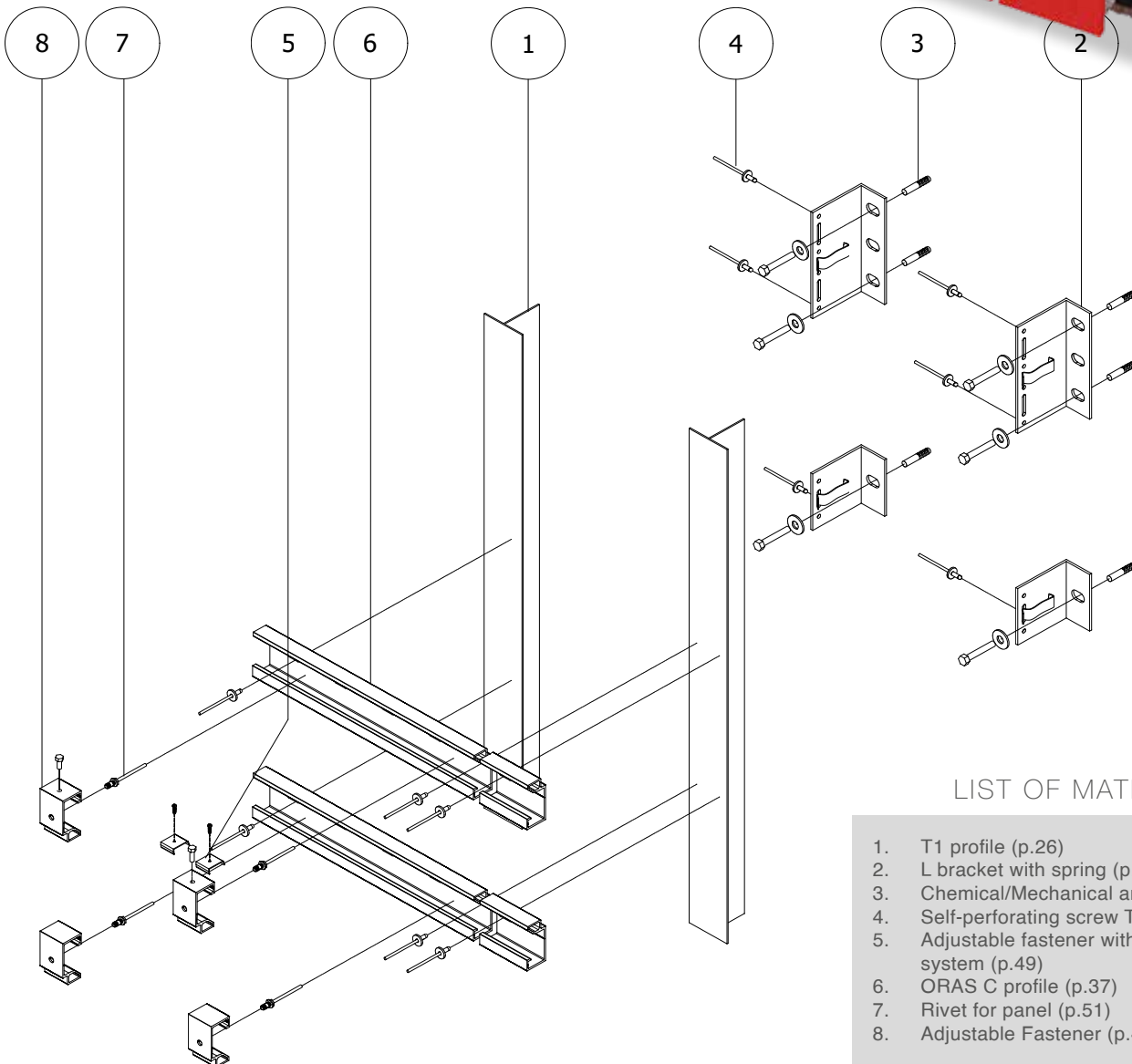
Ali Stone 3 is an Aliva substructure system for natural stone cladding. The system, made of aluminium alloy, is composed of U-shaped brackets, high structural strength box section vertical mullions and horizontal profiles, to which the slabs are secured by means of fasteners mechanically concealed fixed on the back.



LIST OF MATERIALS

1. "Ali Stone 2" vertical profile (p.32)
2. U bracket (p.24)
3. Chemical/Mechanical anchor (p.52-53)
4. TSV rivet (p.24)
5. ORAS GS profile (p.38)
6. Fixing fastener (p.47)
7. Adjustable fastener with locking system (p.49)
8. "Ali Stone 3" Rubber packing (p.47)
9. Adjustable fastener (p.48)

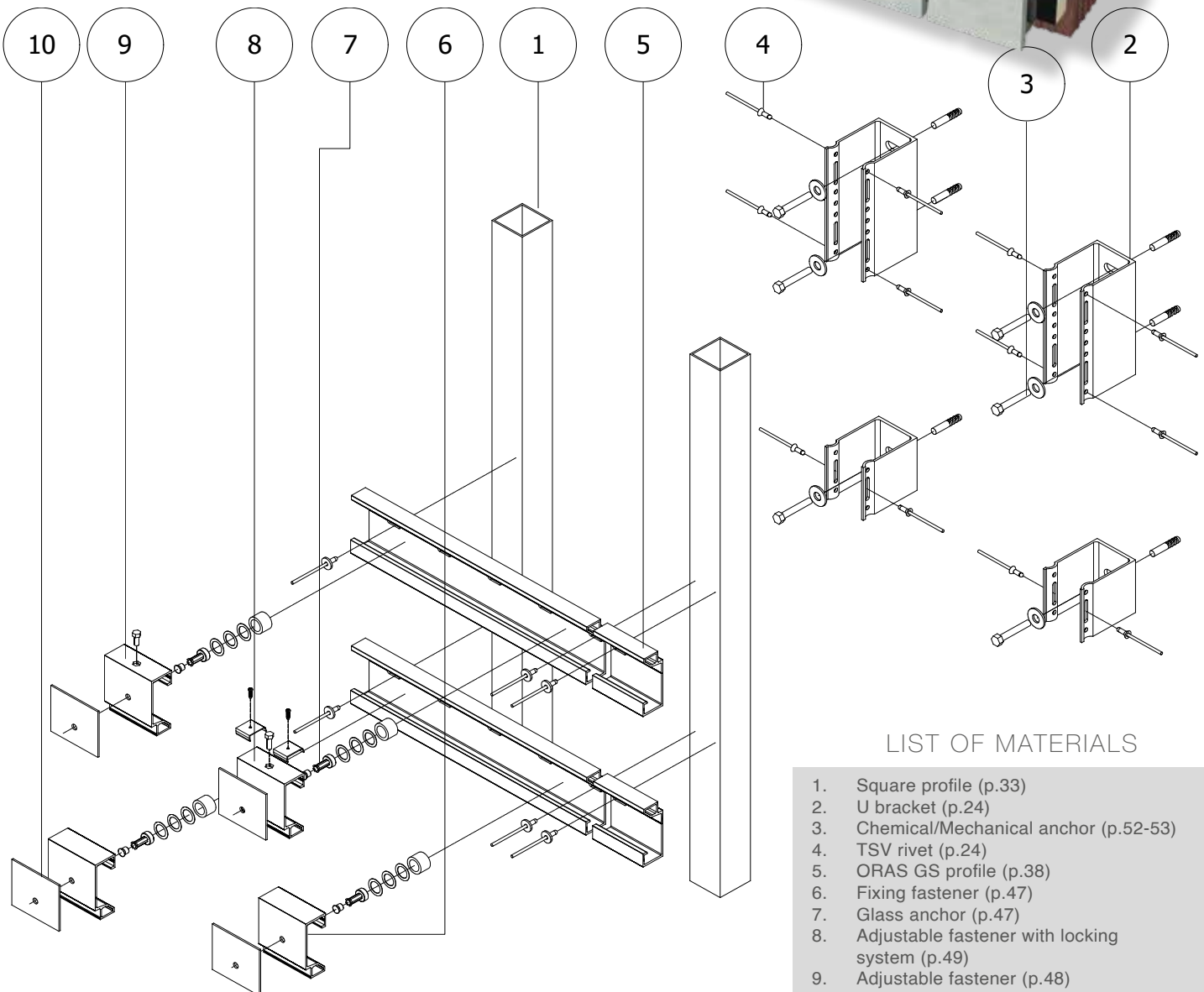
Ali FibroS / Ali HPLS are Aliva substructure systems for cladding in fibre cement and HPL. The system, made of aluminium alloy, is composed of L-shaped brackets, T section vertical mullions and horizontal profiles to which the plates are secured by means of mechanical concealed fasteners fixed on their back.



LIST OF MATERIALS

1. T1 profile (p.26)
2. L bracket with spring (p.22)
3. Chemical/Mechanical ANCHOR (p.52-53)
4. Self-perforating screw TE4.8x19 (p.22)
5. Adjustable fastener with locking system (p.49)
6. ORAS C profile (p.37)
7. Rivet for panel (p.51)
8. Adjustable Fastener (p.48)

Ali GLASS S is an Aliva substructure system for glass cladding. The system, made of aluminium alloy, is composed of L-shaped brackets, T section vertical mullions and horizontal profiles to which the panels are secured by means of fasteners mechanically concealed fixed on the back.



LIST OF MATERIALS

1. Square profile (p.33)
2. U bracket (p.24)
3. Chemical/Mechanical anchor (p.52-53)
4. TSV rivet (p.24)
5. ORAS GS profile (p.38)
6. Fixing fastener (p.47)
7. Glass anchor (p.47)
8. Adjustable fastener with locking system (p.49)
9. Adjustable fastener (p.48)
10. Die cut tape (p.47)

THE COMPONENTS

BRACKETS

L brackets	p. 22
L brackets Heavy Duty	p. 23
U brackets	p. 24
Thermostop	p. 25

PROFILES

T1 Profile	p. 26
T large profile	p. 27
ALI M profile	p. 28
ALI Q profile	p. 29
Ali M/Q profile	p. 30
Ali Q Stone profile	p. 31
Ali Stone2 vertical profile	p. 32
Square profile	p. 33
Ali K20 T profile	p. 34
Meshcovering profile	p. 35
Alucovering starting profile	p. 36
Oras C profile	p. 37
Oras GS profile	p. 38
Ali Stone2 horizontal profile	p. 39
Top Hat profile	p. 40
Micro perforated flashing	p. 41

FIXING SYSTEMS

KL Plate	p. 42
Clip	p. 43
Alucovering clip	p. 44
Clip Ceramic covering	p. 45
Clip Mesh	p. 46
Fixing fastener	p. 47
Adjustable fastener	p. 48
Adjustable fastener with locking system	p. 49
Ali Stone 2 peg	p. 50
Rivet	p. 51

ANCHOR SYSTEMS

Chemical anchor	p. 52
Mechanical anchor	p. 53

BRACKETS

L BRACKETS

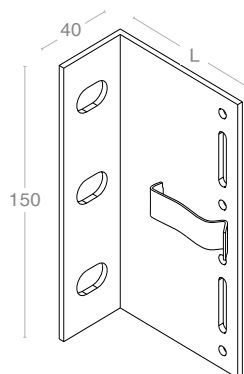
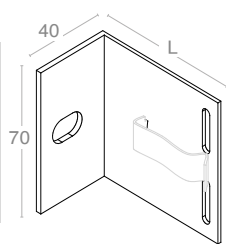


FIELD OF APPLICATION

Support of structures for vertical profile

TECHNICAL INFORMATION

Width	40 mm
Height	70/150 mm
Composition/Material	EN AW-6063 T66



CODE	Width W (mm)	Height H (mm)
STL060H070	60	70
STL060H150	60	150
STL080H070	80	70
STL080H150	80	150
STL100H070	100	70
STL100H150	100	150
STL120H070SR	120	70
STL120H150SR	120	150
STL140H070SR	140	70
STL140H150SR	140	150
STL160H070SR	160	70
STL160H150SR	160	150
STL180H070SR	180	70
STL180H150SR	180	150
STL200H070SR	200	70
STL200H150SR	200	150
STL220H070SR	220	70
STL220H150SR	220	150
STL240H070SR	240	70
STL240H150SR	240	150

ACCESSORIES FOR L BRACKETS

CODE	Packaging
STL015008IT_L bracket spring Inox 15 x 0,8	1 pc.
RIVTL0000_TL rivet 4,8 x 12 k 14 Alu/Inox	box (100 pcs.)
RIVTL481614_TL rivet 4,8 x 16 x 14 Alu/Inox	box (100 pcs.)
RIVTLINOX_TL rivet 4,8 x 14 k 14 Inox/Inox	box (100 pcs.)
VITA24819TE_Locking screw 4,8x19 A2	box (100 pcs.)

BRACKETS

L BRACKETS HEAVY DUTY

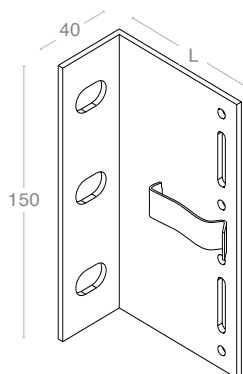
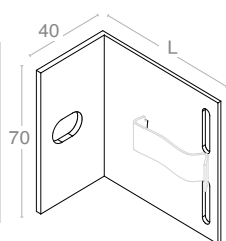


FIELD OF APPLICATION

Support of structures for vertical profile

TECHNICAL INFORMATION

Width	40 mm
Height	70/150 mm
Composition/Material	EN AW-6063 T66



CODE	Width W (mm)	Height H (mm)
STL140H070	140	70
STL140H150	140	150
STL160H070	160	70
STL160H150	160	150
STL180H070	180	70
STL180H150	180	150
STL200H070	200	70
STL200H150	200	150
STL260H070	260	70
STL260H150	260	150
STL360H070	360	70
STL360H150	360	150

ACCESSORIES FOR L BRACKETS

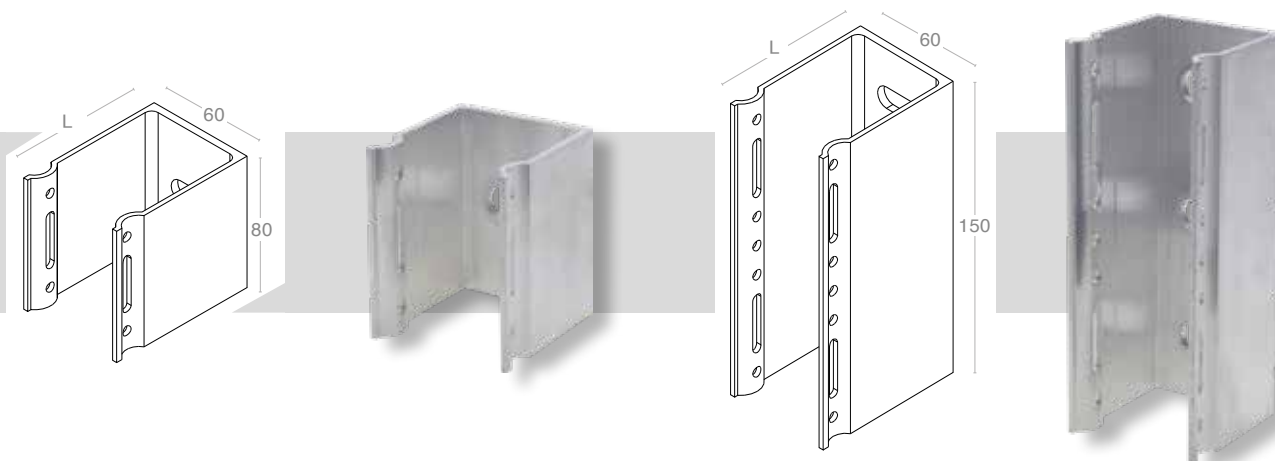
CODE	Packaging
STL015008IT_L bracket spring Inox 15 x 0,8	1 pc.
RIVTL0000_TL rivet 4,8 x 12 k 14 Alu/Inox	box (100 pcs.)
RIVTL481614_TL rivet 4,8 x 16 x 14 Alu/Inox	box (100 pcs.)
RIVTLINOX_TL rivet 4,8 x 14 k 14 Inox/Inox	box (100 pcs.)
VITA24819TE_Locking screw 4,8x19 A2	box (100 pcs.)

FIELD OF APPLICATION

Support of structures for vertical profile

TECHNICAL INFORMATION

Width	60 mm
Height	70/150 mm
Composition/Material	EN AW-6063 T66



CODE	Width W (mm)	Height H (mm)
STU060H070	60	70
STU060H150	60	150
STU080H070	80	70
STU080H150	80	150
STU100H070	100	70
STU100H150	100	150
STU120H070	120	70
STU120H150	120	150
STU140H070	140	70
STU140H150	140	150
STU160H070	160	70
STU160H150	160	150
STU180H070	180	70
STU180H150	180	150
STU200H070	200	70
STU200H150	200	150
STU245H070	245	70
STU245H150	245	150

ACCESSORIES FOR U BRACKETS

CODE	Packaging
RIVTSCALA3_TSV rivet 4,8 x 14 Alu/Inox	box (100 pcs.)
RIVTSCALA4_TSV rivet 4,8 x 15 Inox/Inox Nero	box (100 pcs.)

BRACKETS

THERMOSTOP

THE040080/150IT

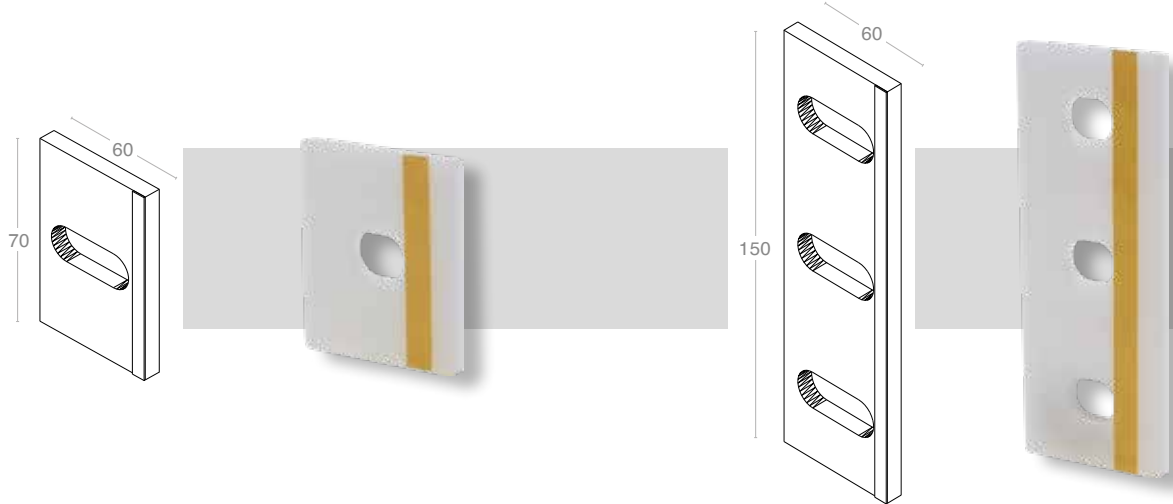


FIELD OF APPLICATION

Insulating sheet to reduce thermal bridge with adhesive tape

TECHNICAL INFORMATION

Width	60 mm
Height	70/150 mm
Composition/Material	PP



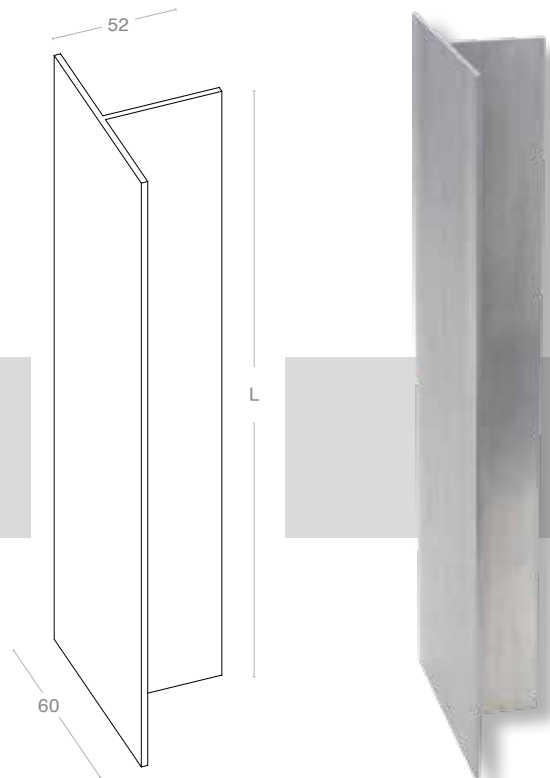
CODE	Height H (mm)	Thickness T (mm)
THE040080IT	70	6
THE040150IT	150	6

FIELD OF APPLICATION

T Profile for vertical substructures

TECHNICAL INFORMATION

Width	60 mm
Depth	52 mm
Composition/Material	EN AW-6063 T6



CODE	Length L (mm)	Thickness T (mm)	Surface finish
PROT100ALLG	6100*	2	mill finish
PROT100ALLV	6100*	2	painting

* The length of the extruded profile may vary according to the dimensional tolerances provide by reference standards:
UNI EN 755-9
UNI EN 1202-2

** For large quantities it is possible to agree on the length of the profiles.

“T” LARGE PROFILE
 PROT1L0ALL

FIELD OF APPLICATION

T large profile for vertical substructures

TECHNICAL INFORMATION

Width	160 mm
Depth	52 mm
Composition/Material	EN AW-6063 T6



CODE	Length L (mm)	Thickness T (mm)	Surface finish
PROT1L0ALLG	6100*	2	mill finish
PROT1L0ALLV	6100*	2	painting

* The length of the extruded profile may vary according to the dimensional tolerances provide by reference standards:
 UNI EN 755-9
 UNI EN 1202-2

** For large quantities it is possible to agree on the length of the profiles.

PROFILES

“ALI M” PROFILE

PROM000ALL

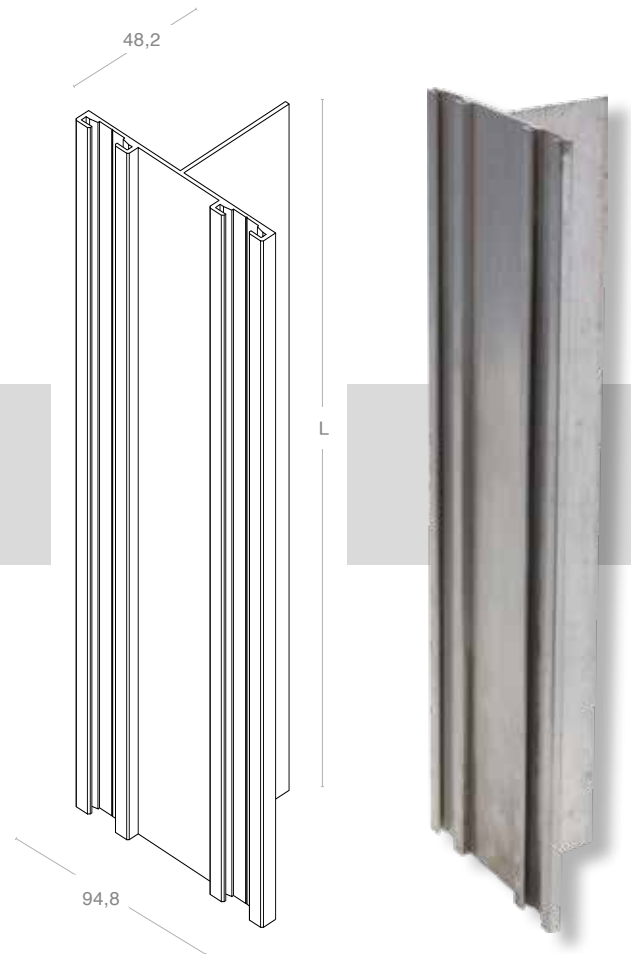


FIELD OF APPLICATION

T profile with rails for vertical substructures

TECHNICAL INFORMATION

Width	94,8 mm
Depth	48,2 mm
Composition/Material	EN AW-6063 T6



CODE	Length L (mm)	Thickness T (mm)	Surface finish
PROM000ALLG	6100*	2	mill finish
PROM000ALLV	6100*	2	painting

* The length of the extruded profile may vary according to the dimensional tolerances provide by reference standards:
UNI EN 755-9
UNI EN 1202-2

** For large quantities it is possible to agree on the length of the profiles.

PROFILES

"ALI Q" PROFILE

PROQ000ALL

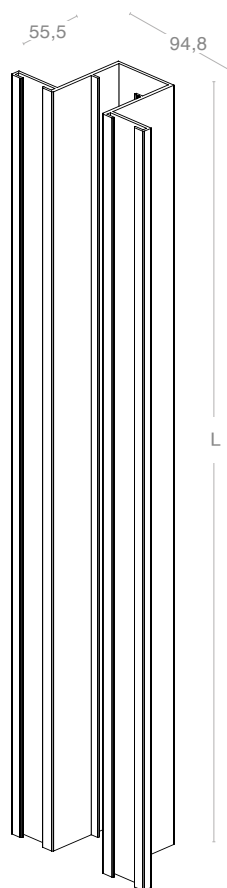


FIELD OF APPLICATION

Omega (Ω) profile with rails for vertical substructures

TECHNICAL INFORMATION

Width	94,8 mm
Depth	55,5 mm
Composition/Material	EN AW-6063 T6



CODE	Length L (mm)	Thickness T (mm)	Surface finish
PROQ000ALLG	6100*	2	mill finish
PROQ000ALLV	6100*	2	painted

* The length of the extruded profile may vary according to the dimensional tolerances provide by reference standards:
UNI EN 755-9
UNI EN 1202-2

** For large quantities it is possible to agree on the length of the profiles.

PROFILES

“ALI M/Q” PROFILE PROMQ00ALL

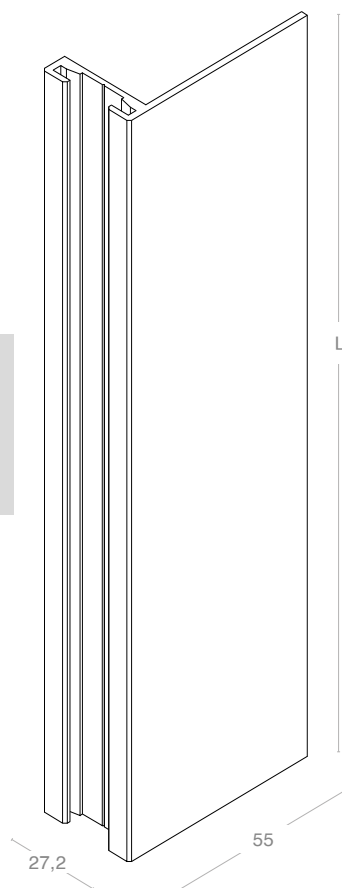


FIELD OF APPLICATION

T profile with rails for vertical substructures

TECHNICAL INFORMATION

Width	27,2 mm
Depth	55 mm
Composition/Material	EN AW-6063 T6



CODE	Length L (mm)	Thickness T (mm)	Surface finish
PROMQ00ALLG	6100*	2	mill finish
PROMQ00ALLV	6100*	2	painting

* The length of the extruded profile may vary according to the dimensional tolerances provide by reference standards:
UNI EN 755-9
UNI EN 1202-2

** For large quantities it is possible to agree on the length of the profiles.

PROFILES

"ALI Q STONE" PROFILE

PROQST0ALL

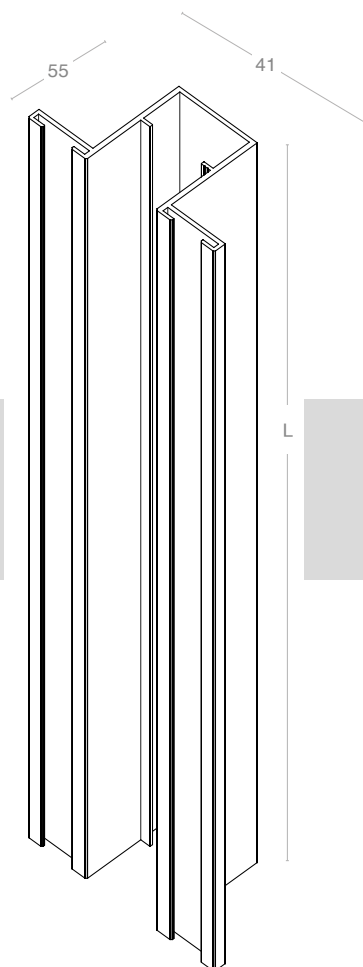


FIELD OF APPLICATION

Omega (Ω) profile with rails for vertical substructures

TECHNICAL INFORMATION

Width	105,6 mm
Depth	55 mm
Composition/Material	EN AW-6063 T6



CODE	Length L (mm)	Thickness T (mm)	Surface finish
PROQST0ALLG	6100*	2	mill finish
PROQST0ALLV	6100*	2	painted

* The length of the extruded profile may vary according to the dimensional tolerances provide by reference standards:

UNI EN 755-9

UNI EN 1202-2

** For large quantities it is possible to agree on the length of the profiles.

“STONE 2” VERTICAL PROFILE
PROST2MALL

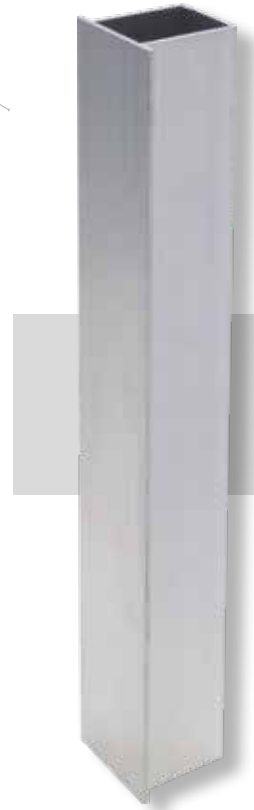
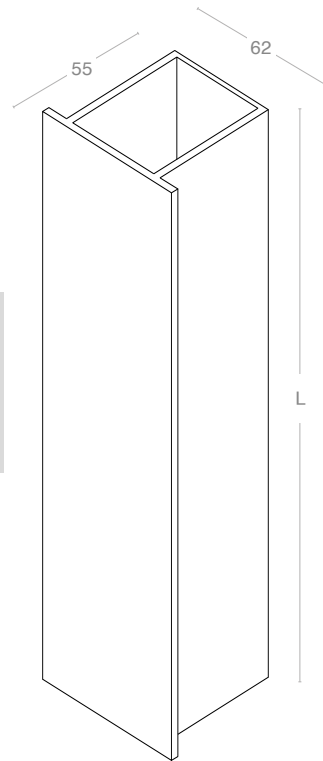


FIELD OF APPLICATION

Square profile for vertical substructures

TECHNICAL INFORMATION

Width	62 mm
Depth	55 mm
Composition/Material	EN AW-6063 T6



CODE	Length L (mm)	Thickness T (mm)	Surface finish
PROST2MALLG	6100*	2	mill finish
PROST2MALLV	6100*	2	painted

* The length of the extruded profile may vary according to the dimensional tolerances provide by reference standards:
UNI EN 755-9
UNI EN 1202-2

** For large quantities it is possible to agree on the length of the profiles.

“SQUARE” PROFILE
PQ04504520AL

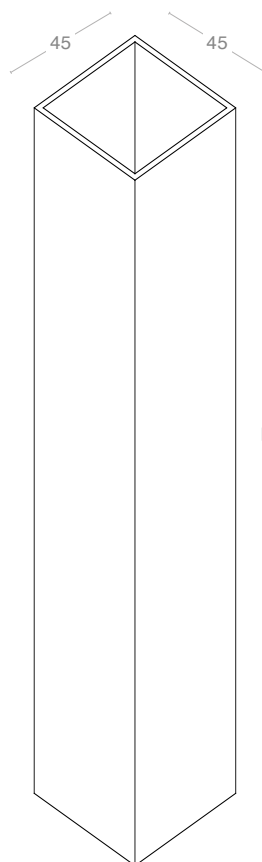


FIELD OF APPLICATION

Square profile for vertical substructures

TECHNICAL INFORMATION

Width	45 mm
Depth	45 mm
Composition/Material	EN AW-6063 T6



CODE	Length L (mm)	Thickness T (mm)	Surface finish
PQ04504520ALG	6100*	2	mill finish
PQ04504520ALV	6100*	2	painted

* The length of the extruded profile may vary according to the dimensional tolerances provide by reference standards:
UNI EN 755-9
UNI EN 1202-2

** For large quantities it is possible to agree on the length of the profiles.

“ALI K20” T PROFILE
PROK200ALL



FIELD OF APPLICATION

Tprofile including machining for vertical substructures

TECHNICAL INFORMATION

Width	130 mm
Depth	67,2 mm
Composition/Material	EN AW-6063 T6



CODE	Length L (mm)	Thickness T (mm)	Surface finish
PROK200ALLG	6000*	2	mill finish
PROK200ALLV	6000*	2	painting

* The length of the extruded profile may vary according to the dimensional tolerances provide by reference standards:
UNI EN 755-9
UNI EN 1202-2

** For large quantities it is possible to agree on the length of the profiles.

PROFILES

"ALI MESH" PROFILE

PROMU00ALL

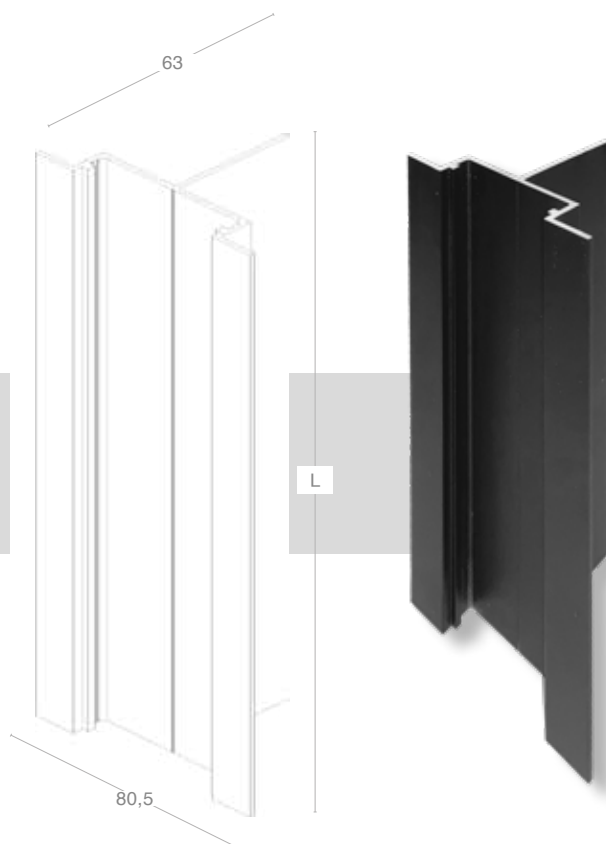


FIELD OF APPLICATION

Omega (Ω) profile with rails for vertical substructures

TECHNICAL INFORMATION

Width	80,5 mm
Depth	63 mm
Composition/Material	EN AW-6063 T6



CODE	Length L (mm)	Thickness T (mm)	Surface finish
PROMU00ALLG	6000*	2	grezzo
PROMU00ALLV	6000*	2	verniciato

* The length of the extruded profile may vary according to the dimensional tolerances provide by reference standards:

UNI EN 755-9

UNI EN 1202-2

** For large quantities it is possible to agree on the length of the profiles.

ALUCOVERING STARTING PROFILE

PR35421OC

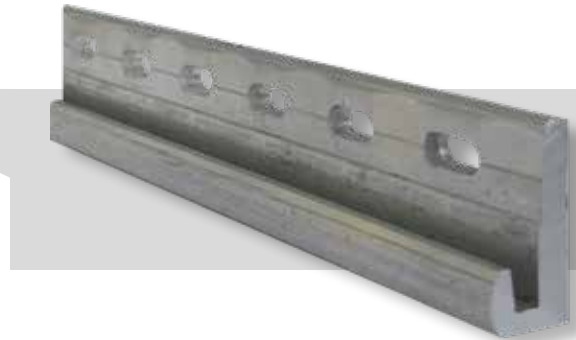
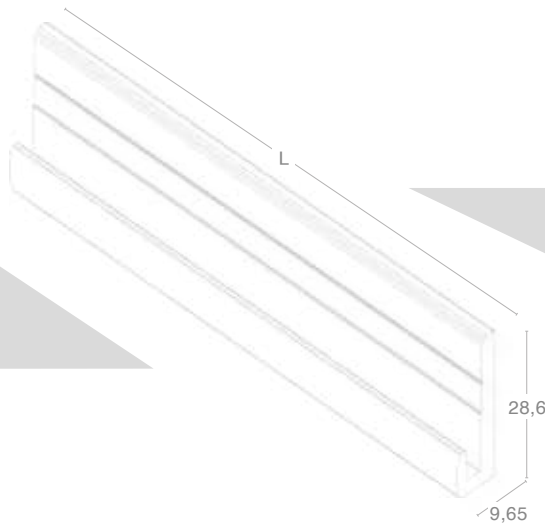


FIELD OF APPLICATION

Starting profile for Alucovering® system

TECHNICAL INFORMATION

Width	9,65 mm
Height	28,6 mm
Composition/Material	EN AW-6063 T66



CODE	Length L (mm)	Thickness T (mm)	Surface finish
PRO35421OCG	6000*	var	mill finish
PRO35421OCV	6000*	var	painted

* The length of the extruded profile may vary according to the dimensional tolerances provide by reference standards:

UNI EN 755-9
UNI EN 1202-2

PROFILES

"ORAS C" PROFILE

PROORSCALL

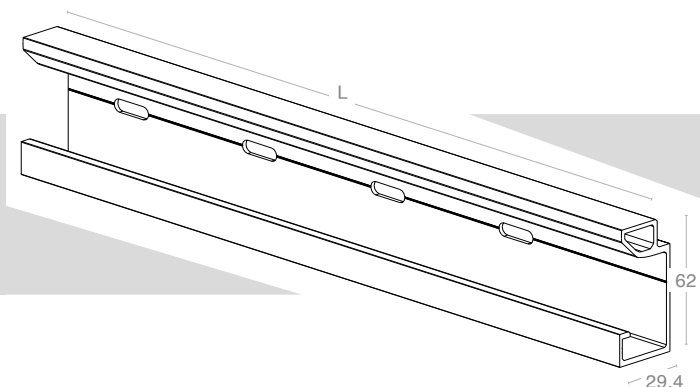


FIELD OF APPLICATION

C profile for horizontal substructures

TECHNICAL INFORMATION

Width	29,4 mm
Height	62 mm
Composition/Material	EN AW-6063 T6



CODE	Length L (mm)	Thickness T (mm)	Surface finish
PROORSCALLG	6000*	2	mill finish
PROORSCALLV	6000*	2	painted

* The length of the extruded profile may vary according to the dimensional tolerances provide by reference standards:
UNI EN 755-9
UNI EN 1202-2

** For large quantities it is possible to agree on the length of the profiles.

“ORAS GS” PROFILE
PROOTSCALL

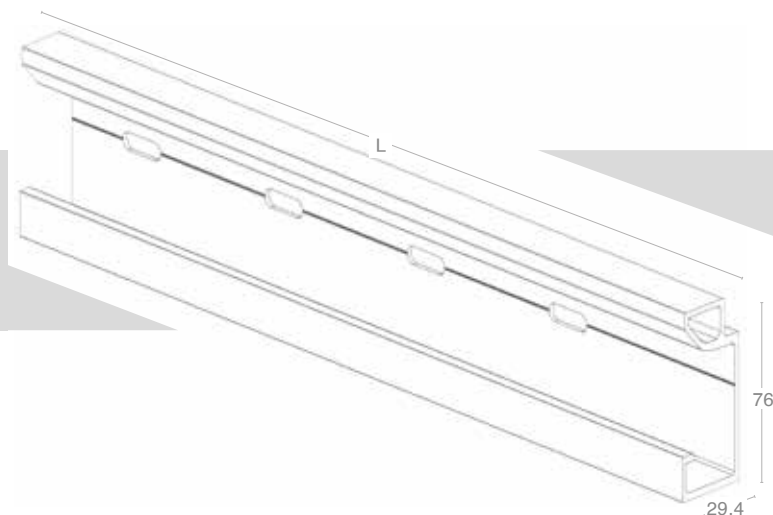


FIELD OF APPLICATION

C profile for horizontal substructures

TECHNICAL INFORMATION

Width	29,4 mm
Height	76 mm
Composition/Material	EN AW-6063 T6



CODE	Length L (mm)	Thickness T (mm)	Surface finish
PROOTSCALLG	6000*	2	mill finish
PROOTSCALLV	6000*	2	painting

* The length of the extruded profile may vary according to the dimensional tolerances provide by reference standards:
UNI EN 755-9
UNI EN 1202-2

** For large quantities it is possible to agree on the length of the profiles.

“STONE 2” HORIZONTAL PROFILE
PROST2CALL

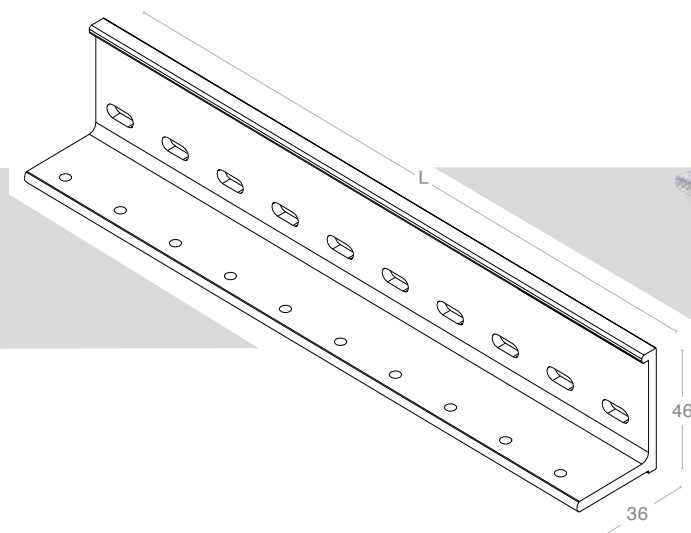


FIELD OF APPLICATION

L profile for horizontal substructures

TECHNICAL INFORMATION

Width	36 mm
Height	46 mm
Composition/Material	EN AW-6063



CODE	Length L (mm)	Thickness T (mm)	Surface finish
PROST2CALLG	6000*	4	mill finish
PROST2CALLV	6000*	4	painting

* The length of the extruded profile may vary according to the dimensional tolerances provide by reference standards:
UNI EN 755-9
UNI EN 1202-2

** For large quantities it is possible to agree on the length of the profiles.

FIELD OF APPLICATION

Profile for horizontal substructures

TECHNICAL INFORMATION

Width	130/210mm
Height	28 mm
Composizione/Materiale	EN AW-6063 T6



PR33107ALLG_ Top Hat H070



PR34454ALLG_ Top Hat H150

CODE	Length L (mm)	Thickness T (mm)	Surface finish
PR33107ALLG_ Top Hat H070	6000*	2	mill finish
PR33107ALLV_ Top Hat H070	6000*	2	painting
PR34454ALLG_ Top Hat H150	6000*	2	mill finish
PR34454ALLV_ Top Hat H150	6000*	2	painting

* The length of the extruded profile may vary according to the dimensional tolerances provide by reference standards:
 UNI EN 755-9
 UNI EN 1202-2

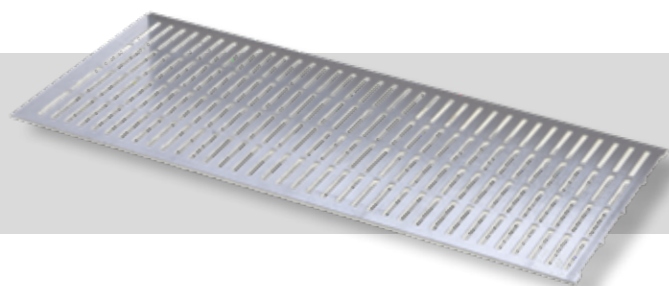
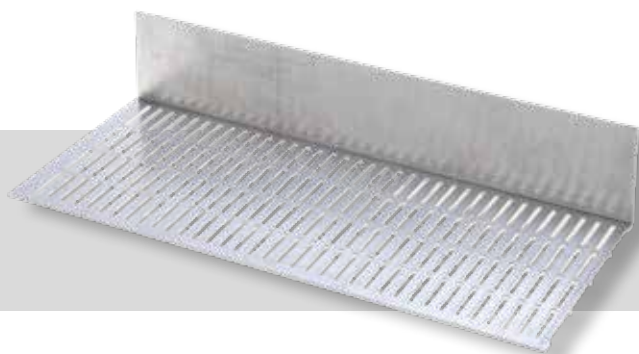
** For large quantities it is possible to agree on the length of the profiles.

FIELD OF APPLICATION

Flashing for ventilation

TECHNICAL INFORMATION

Width	120 mm
-------	--------



SMI120 - Micro-perforated flashig

PSC120 - Extension micro-perfrated flashing

CODICE	Length L (mm)	Thickness T (mm)	Surface finish
SMI120G_ Micro-perforated flashing	6000*	2	mill finish
PSC120G_ Extension micro-perfrated flashing	6000*	2	mill finish

* The length of the extruded profile may vary according to the dimensional tolerances provide by reference standards:
 UNI EN 755-9
 UNI EN 1202-2

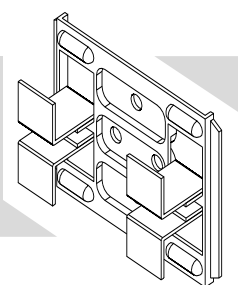
** For large quantities it is possible to agree on the length of the profiles.

FIELD OF APPLICATION

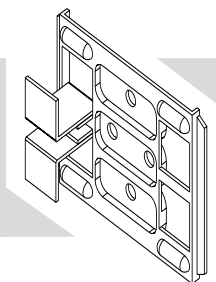
Visible attachment systems for porcelain stoneware slabs.
Plates supplied in black and clips with guaranteed painting as color plates

TECHNICAL INFORMATION

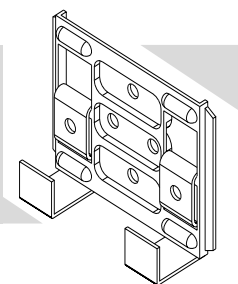
Width	45 mm
Height	60 mm
Composition/Material	stainless steel



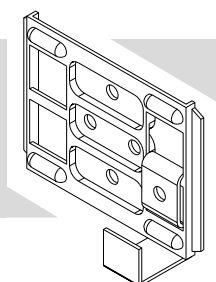
PLKFG2S105I - KL joint plate with 4 hooks



PLKFG1S105I - KL joint plate with 2 hooks



PLKBG2S105I - KL base plate with 2 hooks



PLKBG1S105I - KL base plate with 1 hook



EPDIS1158_Ali KL pad

CODE	Suitable for cladding with thickness (mm)
PLKFG2S105IV	10,5
PLKFG1S105IV	10,5
PLKBG2S105IV	10,5
PLKBG1S105IV	10,5

ACCESSORIES FOR PLATES

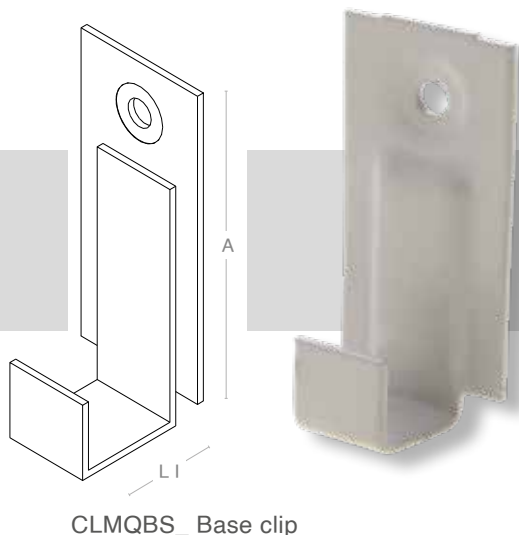
CODE	Packaging
EPDIS1158_Ali KL pad	box (100 pcs.)
RIV3209RAL_KL rivet 3,2 x 9 inox/inox	box (100 pcs.)

FIELD OF APPLICATION

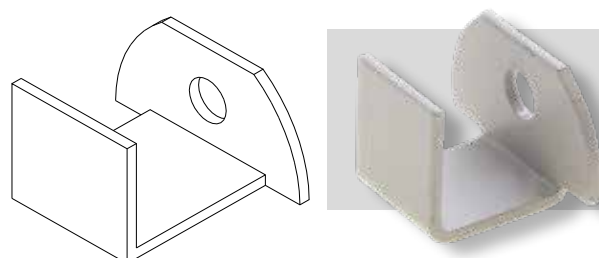
Visible attachment systems for porcelain stoneware and natural stone slabs. Painting guaranteed by color plates.

TECHNICAL INFORMATION

Internal width	11,6/13,6 mm
Height	variable
Composition/Material	stainless steel



CLMQBS_ Base clip



CLMQFS_ Top clip



EPDM00000_ Elastic Gasket ali Q/M

CODE	Surface finish	Suitable for cladding	thickness of cladding. (mm)
CLMQBS110I V_Base clip	painted	Gres	11
CLMQBS130I V_Base clip	painted	Gres	13
CLMQFS110I V_Top clip	painted	Gres	11
CLMQFS130I V_Top clip	painted	Gres	13

ACCESSORIES FOR CLIP

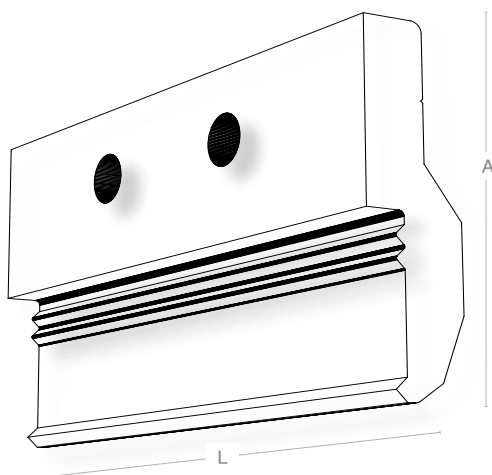
CODE	Suitable for cladding with thickness (mm)	Packaging
DIS121BITA V_Spacer 6/8 mm	11 / 13	box (100 pcs.)
RIVDIST00_Rivet 4 x 8	11 / 13	box (100 pcs.)
EPDM00000_Ali Q/M elastic gasket	11 / 13	roll (100 lm)
VITAUT4213A2_Locking screw A2 4,2 x 13	11 / 13	box (100 pcs.)

FIELD OF APPLICATION

Fixing systems for Alucovering® panels

TECHNICAL INFORMATION

Width	60 mm
Height	32,9 mm
Composition/Material	EN AW-6063



CODE

CLPALUP35420

ACCESSORIES FOR CLIP

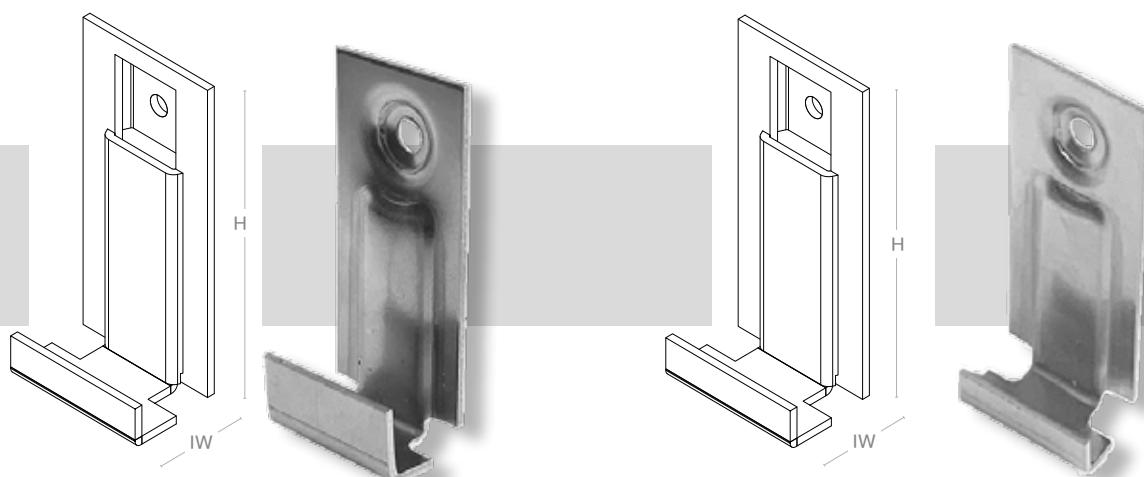
CODE	Packaging
RIVINOX14_Rivet 4,8 x 14 inox A2	box (100 pcs.)

FIELD OF APPLICATION

Visible attachment systems for porcelain stoneware and natural stone slabs. Painting guaranteed by color plates.

TECHNICAL INFORMATION

Internal width	26 mm
Height	16 mm
Composition/Material	Stainless steel



EPDM00000_ Elastic gasket ali Q Stone

CODE	Surface finish	Suitable for cladding with thickness (mm)
CLNBAS100I G_Clip sp. 10_den.10	painted	Gres 20mm
CLNBCS100I G_Clip sp. 10_den.06	painted	Gres 20mm

ACCESSORIES FOR CLIP

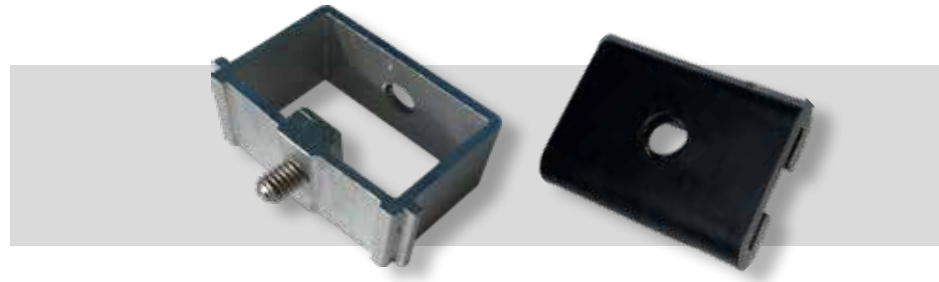
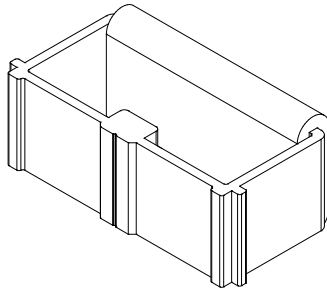
CODICE	Packaging
RIVTLINOX_TL rivet 4,8 x 14 K14 inox/inox	box (100 pcs.)
VIT4213A2_Locking screw A2 4,2 x 13	box (100 pcs.)
EPDMQST00_ elastic gasket Ali Q Stone	roll (100 lm)

FIELD OF APPLICATION

Attachment systems for mesh

TECHNICAL INFORMATION

Width	25 mm
Composition/Material	EN AW-6063 / epdm/ Stainless steel AISI 304



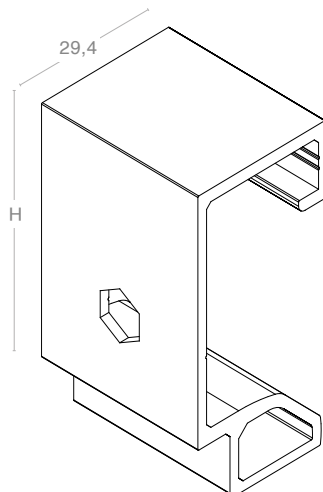
CODE	Surface finish
NTCMP140742 G_ Clip Mesh complete, including EPDM and screw	mill finish

FIELD OF APPLICATION

Invisible attachment systems for porcelain stoneware and natural stone slabs.

TECHNICAL INFORMATION

Width	29,4 mm
Height	62/76 mm
Composition/Material	EN AW-6063 T66



CODE	Length L (mm)	Height H (mm)	Thickness (mm)	Hole (mm)	Suitable for cladding
GRT1E09L36G	36	62	2	hexagonal Keil®	Gres, HPL, Fibre C
GRT2F05L70G	70	76	2	Ø 5/7	Other coating
GRTF130L70G	70	76	2	Ø 13	Glass
GRTS070L70G	70	76	2	Ø 7/10	Stone

ACCESSORIES FOR FIXING FASTENER

TYPE OF COATING	ACCESSORIES
GRES	TASKEI815_Keil® anchor
	EPDNEOPRENE_Ali S fastener pad mm0.2
HPL - FIBER C	RIV907253_TU-S rivet 6 x 9
	EPDNEOPRENE_Ali S fastener pad mm0.2
GLASS	TARDCOMP_Glass anchor complete
	FUSD04991FA322_Die cut tape 4991 hole ø14mm
STONE	TASKEI161_Keil® anchor for stone
	GUA606002F12_Epdm 60x60x2 hole ø12

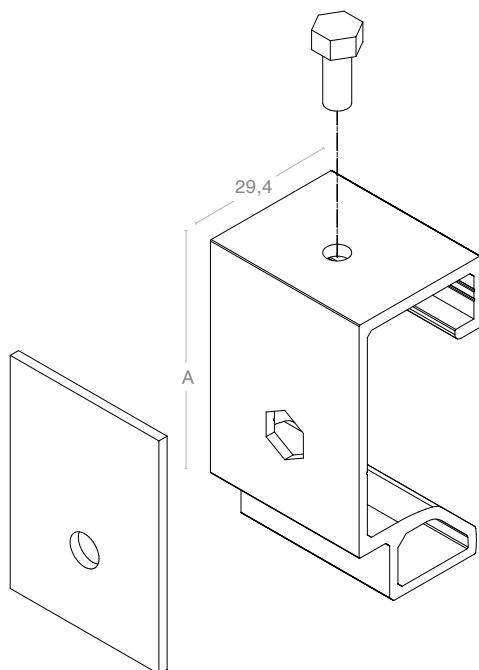
ADJUSTABLE FASTENER

Adjustable fastener 2 holes



FIELD OF APPLICATION

Invisible attachment systems for porcelain stoneware and natural stone slabs.



TECHNICAL INFORMATION

Width	29,4 mm
Height	62/76 mm
Composition/Material	EN AW-6063 T66



CODE	Length L (mm)	Height H (mm)	Thickness (mm)	Hole (mm)	Suitable for cladding
GRR1E09L36G	36	62	2	hexagonal Keil®	Gres, HPL, Fibre C
GRR2F05L70G	70	76	2	Ø 5/7	Other coating
GRRF130L70G	70	76	2	Ø 13	Glass
GRRS070L70G	70	76	2	Ø 7/10	Stone

ACCESSORIES FOR ADJUSTABLE FASTENER

TYPE OF COATING	ACCESSORIES
GRES	TASKEI815_Keil® anchor
	EPDNEOPRENE_Ali S fastener pad mm0.2
	VITR00000_Regulation screw 5X10 inox
HPL - FIBER C	RIV907253_TU-S rivet 6 x 9
	EPDNEOPRENE_Ali S fastener pad mm0.2
	VITR00000_Regulation screw 5X10 inox
GLASS	TARDCOMP_Glass anchor complete
	FUSD04991FA322_Die cut tape 4991 hole ø14mm
	VITR00000_Regulation screw 5X10 inox
STONE	TASKEI161_Keil® anchor for stone
	GUA606002F12_Epdm 60x60x2 hole ø12
	VITR00000_Regulation screw 5X10 inox

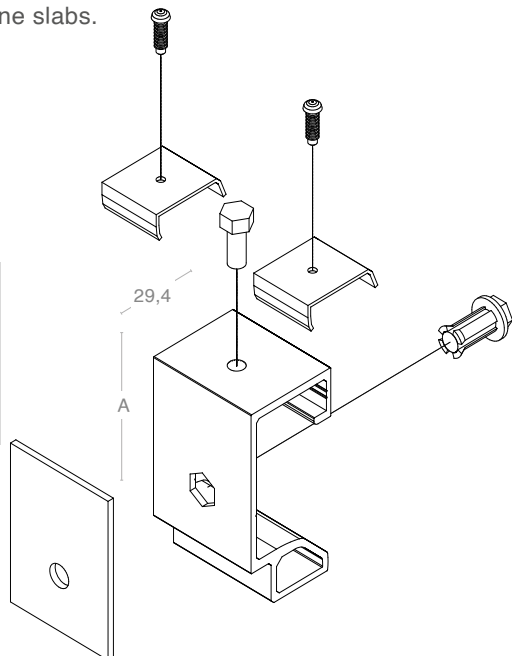
ADJUSTABLE FASTENER with LOCKING SYSTEM

Adjustable fastener 2 holes with locking system



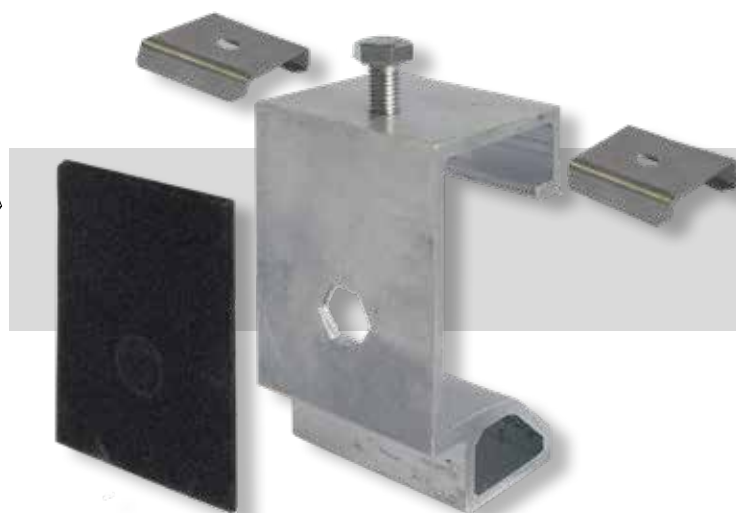
FIELD OF APPLICATION

Invisible attachment systems for porcelain stoneware and natural stone slabs.



TECHNICAL INFORMATION

Width	29,4 mm
Height	62/76 mm
Composition/Material	EN AW-6063 T66



CODE	Length L (mm)	Height H (mm)	Thickness (mm)	Hole (mm)	Suitable for cladding
GRR1E09L36G	36	62	2	hexagonal Keil®	Gres, HPL, Fibre C
GRR2F05L70G	70	76	2	Ø 5/7	Other coating
GRRF130L70G	70	76	2	Ø 13	Glass
GRRS070L70G	70	76	2	Ø 7/10	Stone

ACCESSORIES FOR ADJUSTABLE FASTENER WITH LOCKING SYSTEM

TYPE OF COATING	ACCESSORIES
GRES	TASKEI815_Keil® anchor
	EPDNEOPRENE_Ali S fastener pad mm0.2
	VITR00000_Regulation screw 5X10 inox
	STUBLOC04_Ali S block
	VIT4213A2_Locking screw A2 4,2 x 13
HPL - FIBER C	RIV907253_TU-S rivet 6 x 9
	EPDNEOPRENE_Ali S fastener pad mm0.2
	VITR00000_Regulation screw 5X10 inox
	STUBLOC04_Ali S block
	VIT4213A2_Locking screw A2 4,2 x 13
GLASS	TARDCOMP_Glass anchor complete
	FUSD04991FA322_Die cut tape 4991 hole ø14mm
	VITR00000_Regulation screw 5X10 inox
	STUBLOC04_Ali S block
	VIT4213A2_Locking screw A2 4,2 x 13
STONE	TASKEI161_Keil® anchor for stone
	GUA606002F12_Epdm 60x60x2 hole ø12
	VITR00000_Regulation screw 5X10 inox
	STUBLOC04_Ali S block
	VIT4213A2_Locking screw A2 4,2 x 13

ALI STONE 2 PEGS

Starting and intermediate peg for ALI STONE 2



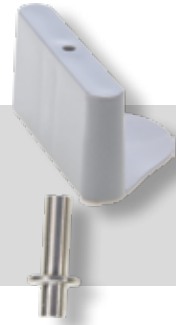
FIELD OF APPLICATION

Invisible attachment systems for natural stone slabs.

TECHNICAL INFORMATION

Composition/Material	Stainless steel / Nylon
----------------------	-------------------------

BASE PEG



JOINT PEG



CODE
VPIO1304C_Base peg inox
VLIASLOT0_Slot
VITAUT4819_Self tapping screw
VFCF30003_Joint peg
VLIASLOT0_Slot
RIVTLINOX_TL rivet 4,8x14 k14 inox/inox

FIELD OF APPLICATION

Visible attachment systems for fibreglass and plastic laminate plates. Painting guaranteed by color plates.

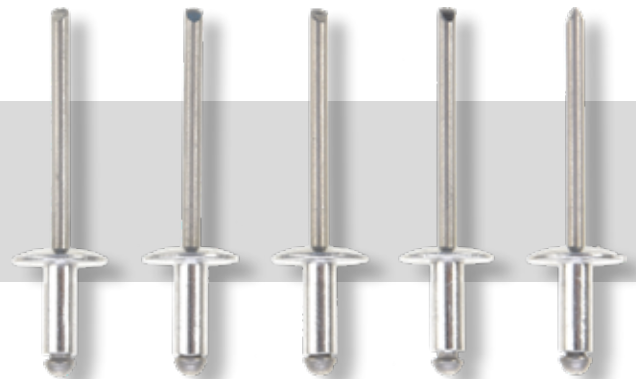
TECHNICAL INFORMATION

Substructure	Metal
Surface finish	Steel or lacquered in the colours of the plate
Composition/Material	Stainless steel/Aluminium

RIV481620BE90
Rivet + Bushing



RIV041815
Rivet



BOCD41X60
Bushing



CODE	Composition
RIV481620BE90	Stainless steel
RIV041815	Aluminium
BOCD41X60	Aluminium

ANCHORING SYSTEM

EPOXY ACRYLATE VINILESTER RESIN

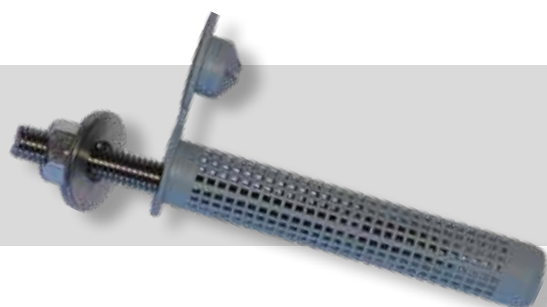
FIELD OF APPLICATION

Fixing of the brackets to the masonry. Specific for perforated masonry.



CARTHITMMG2
Chemical anchor

CODE	Contents of the cartridge (ml)
CARTRES400C	400



BUSRET + BARCOMP
Mesh sleeve + Anchor rod complete, including nut and washer

CODE
BUSHIT085 - Plastic sleeve 15x85
BUSHIT130 - Plastic sleeve 15x130

CODE	Dimension (mm)	Thickness of use (mm)
BARCOMP100	8X100	10
BARCOMP160	8X160	160

ANCHORING SYSTEM

MECHANICAL ANCHOR

FIELD OF APPLICATION

Fixing of the brackets to the masonry. Specific for perforated concrete.

TASTE8X75

Mechanical anchor – Aliva- M8x75 20/10 Complete

TECHNICAL INFORMATION

Anchor dimension	8 mm
Hole diameter	8 mm
Composition/Material	Stainless steel



CODE	Anchor dimension (mm)	Anchor length (mm)	Packaging
TASTE8x75 A2	8	75	1 pcs
TASTE8x75 A4	8	75	1 pcs



COMPANY WITH QUALITY AND ENVIRONMENT MANAGEMENT
SYSTEM CERTIFIED ACCORDING TO RULES
UNI EN ISO 9001 AND **UNI EN ISO 14001**

Via Bellaria 40
47030 San Mauro Pascoli (FC) ITALIA
Tel: +39 0541 815811

www.aliva.it

 ***alivafacadesystems***

www.gruppoivas.com
info@aliva.it